



Undergraduate Scholarships Review 2007



Simon French

Senior Policy Officer

Scholarships & Prizes Office

- Administration of all prizes
- Administration of pan-faculty undergraduate scholarships





Review Committee, 2007

- Pro-Vice-Chancellor (Learning and Teaching)
 - Chair of Academic Board
 - Representative Deans
 - Chief Operating Officer (Community)
 - Executive Director, Community
 - Director, Marketing and Student Recruitment
 - Director, Student Services
 - Head, Careers and Scholarships
-



Pan-faculty undergraduate scholarships

- **Outstanding Achievement Scholarships**
UAI 99.95 or 100.0. \$10k p.a., duration of degree. Approximately 40 awards
 - **University of Sydney Scholarships**
UAI > 95 and personal qualities (leadership, creativity, community involvement etc). \$5k p.a., for duration of degree (*With Merit*, 50 awards) or one year only (*Entry*, 100 awards)
-



Pan-faculty undergraduate scholarships

- **Access Scholarships**
Academic ability (usually UAI in high 90s) and equity (financial, rural/regional, medical). \$4k p.a., duration of degree, 65 awards
 - **Honours Scholarships**
Awarded primarily on merit (some faculties consider equity). \$5k, one year only. 50 awards
 - **Continuing Scholarships**
Awarded on academic merit, \$5k, one year only, 100 awards
-



Pan-faculty undergraduate scholarships

- **Commonwealth Education Costs Scholarships**

Commonwealth funded, awarded purely on equity (primarily financial need). \$2124 p.a., max 4 years, 214 awards

- **Commonwealth Accommodation Scholarships**

Commonwealth funded, awarded purely on equity (primarily financial need plus rural/regional). \$4248 pa, max 4 years, 148 awards



Scholarships Analysis

- First ever quantitative analysis of scholarships recipients performance
 - Using Flexsis data, 2002-2006 inclusive
 - Measures enrolments
 - Contains data artefacts
 - Large pinch salt required
-



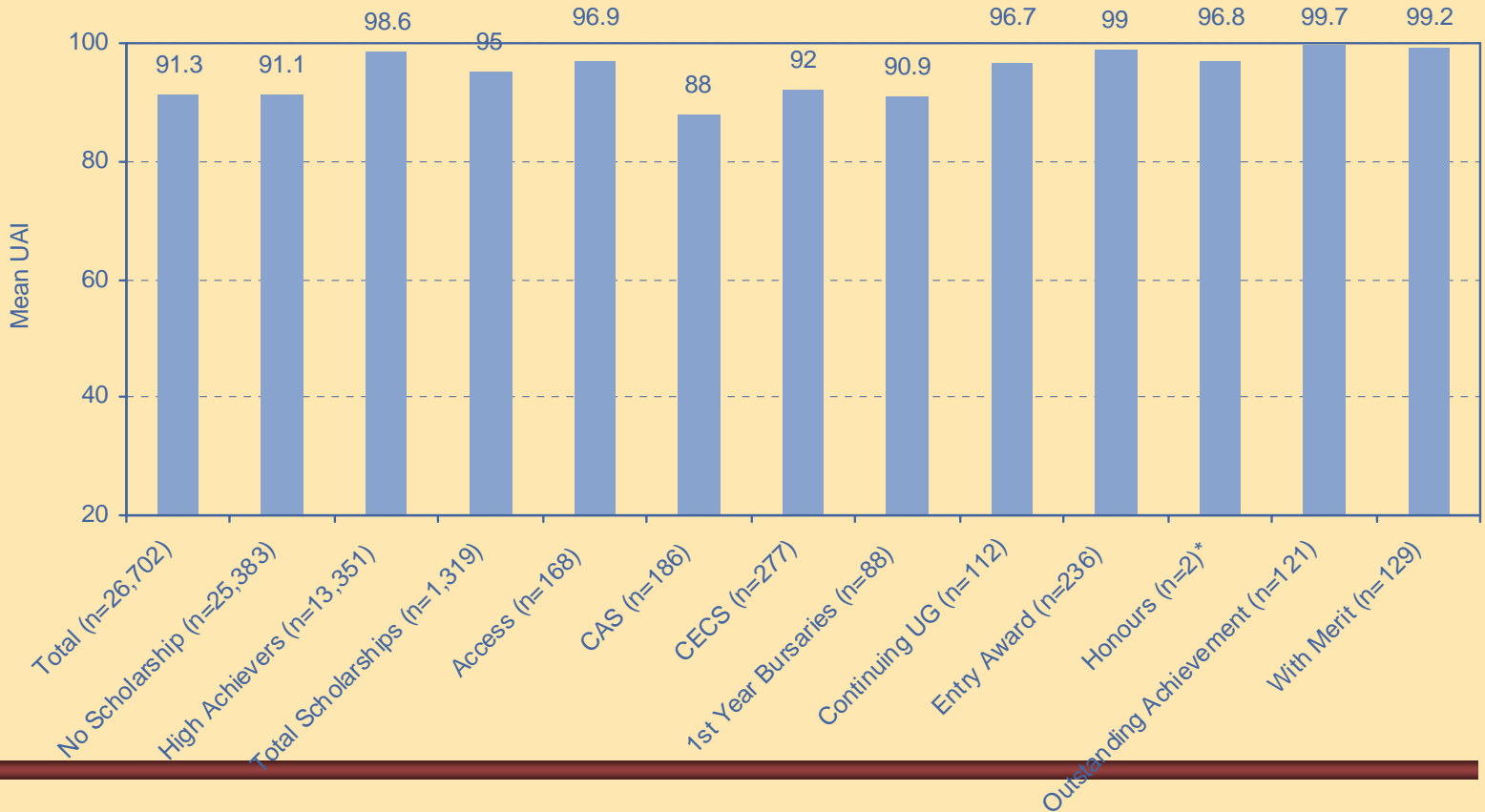
Scholarships Analysis

The following measurable outcomes have been assumed:

- Students passing all units attempted
 - High annual average marks (AAMs)
 - Progression to honours
 - Level of degree completion (eg Honours 1, Honours 2, University Medal)
 - Progression to higher degrees
-

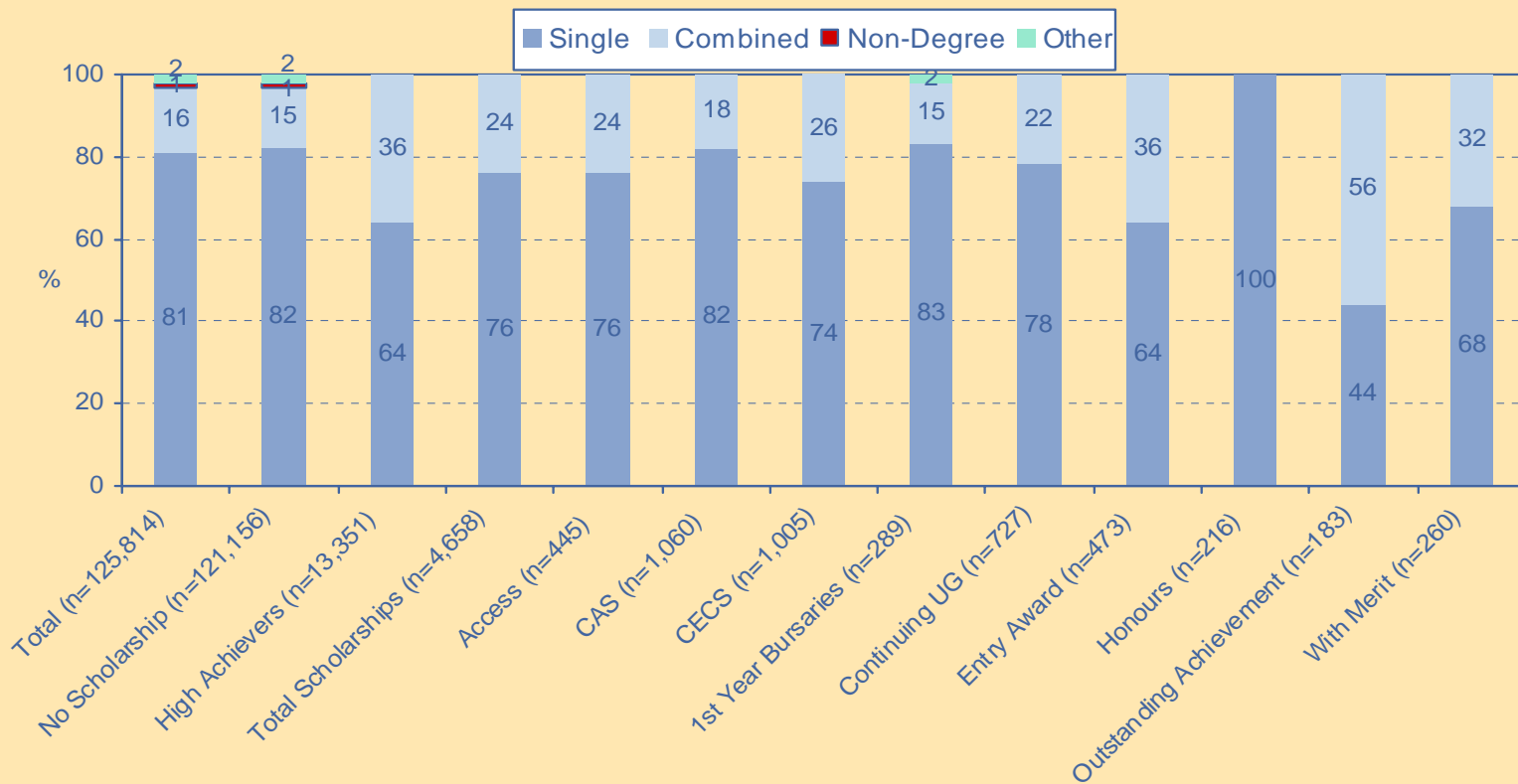


Entry UAI



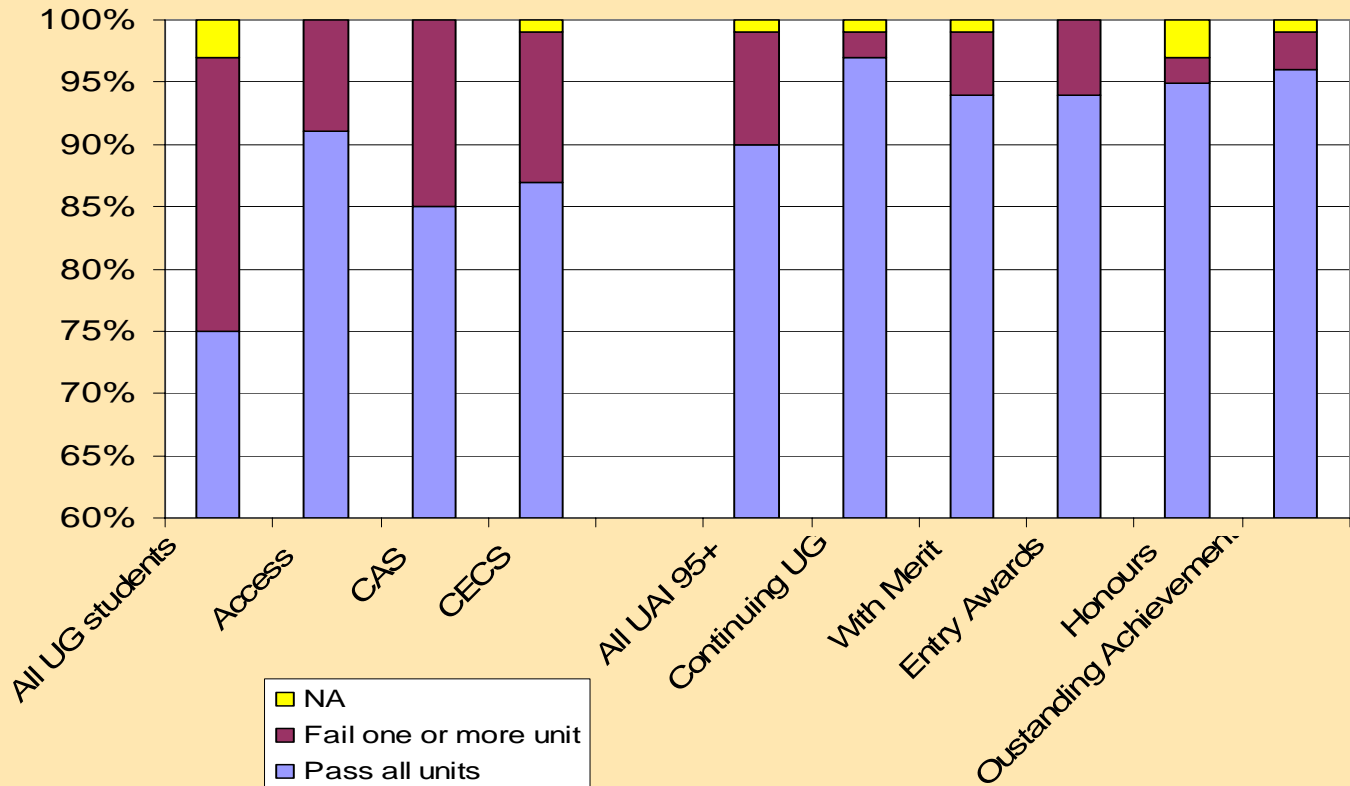


Degree type (single/combined)



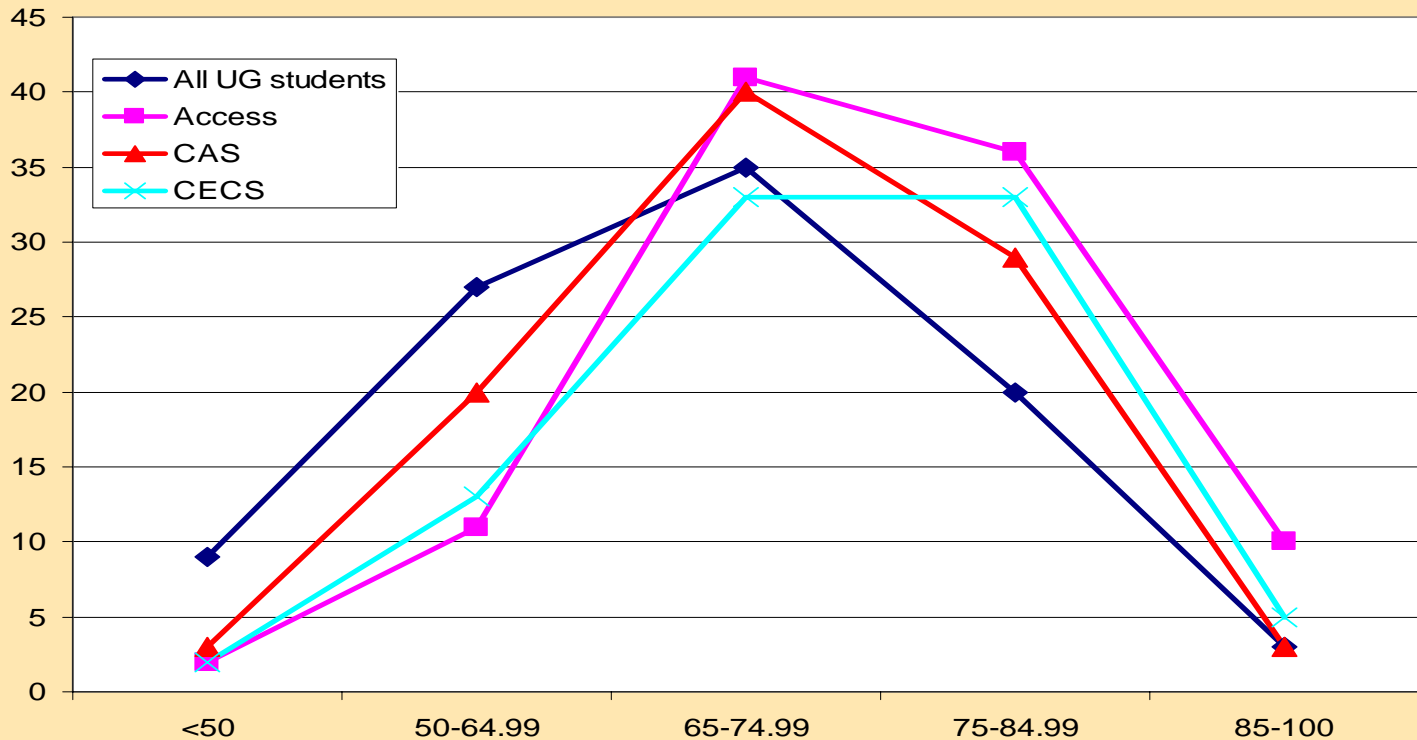


Pass all units attempted



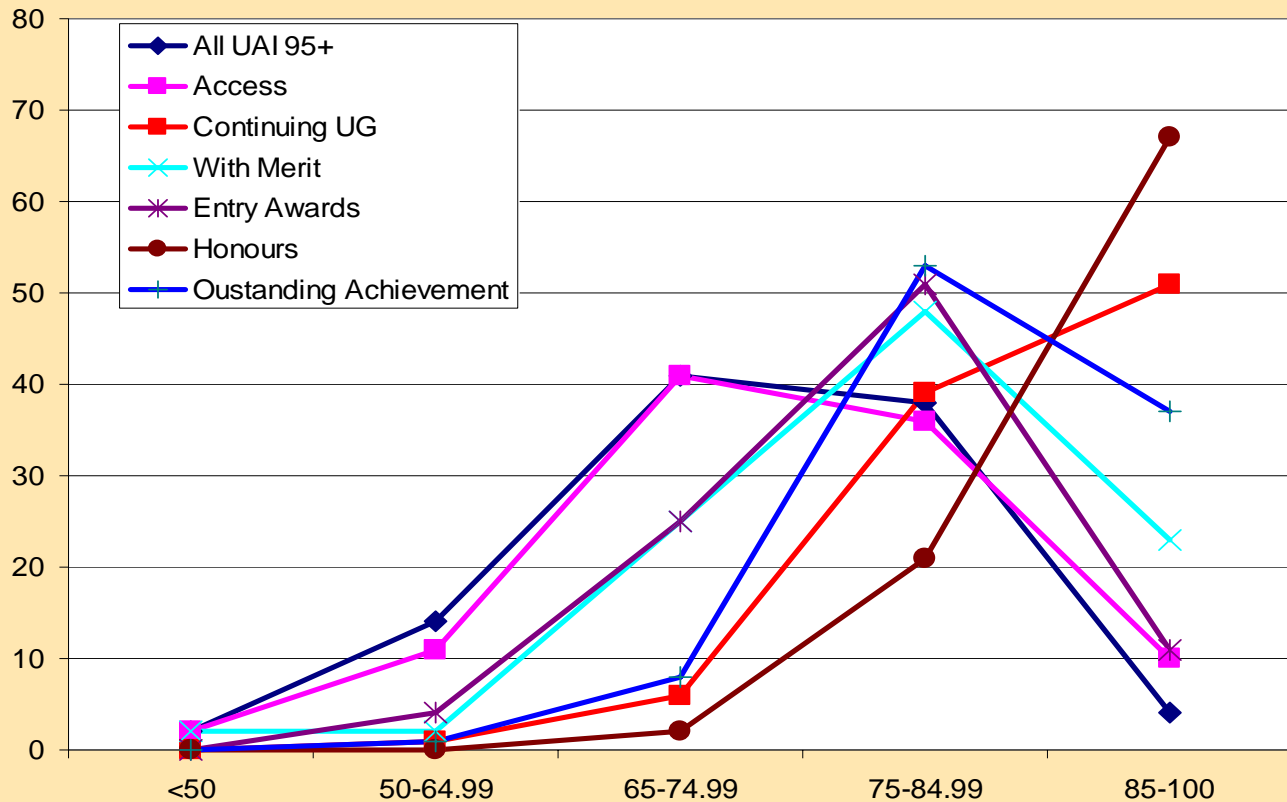


AAM – equity scholarships



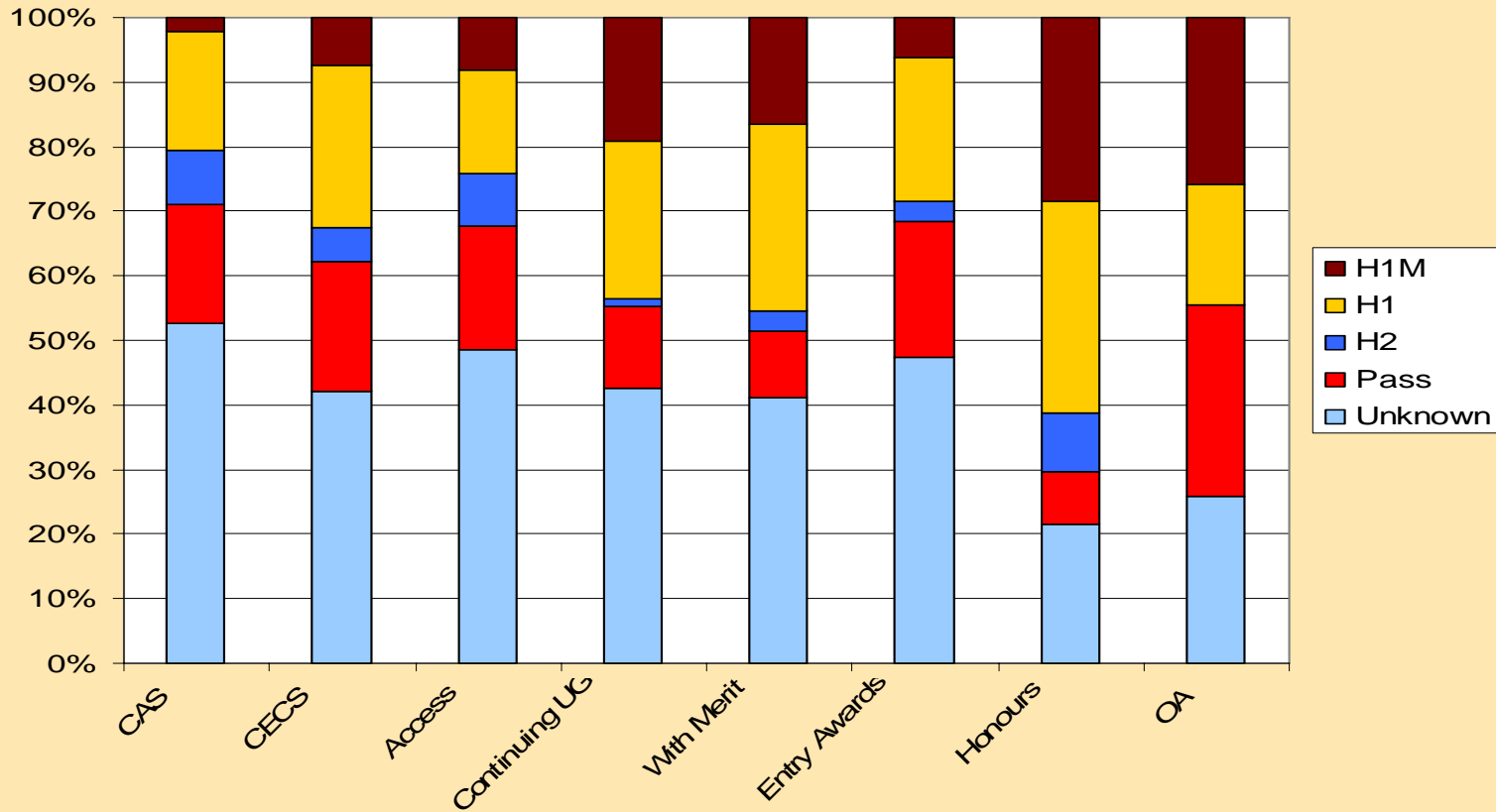


AAM – academic scholarships



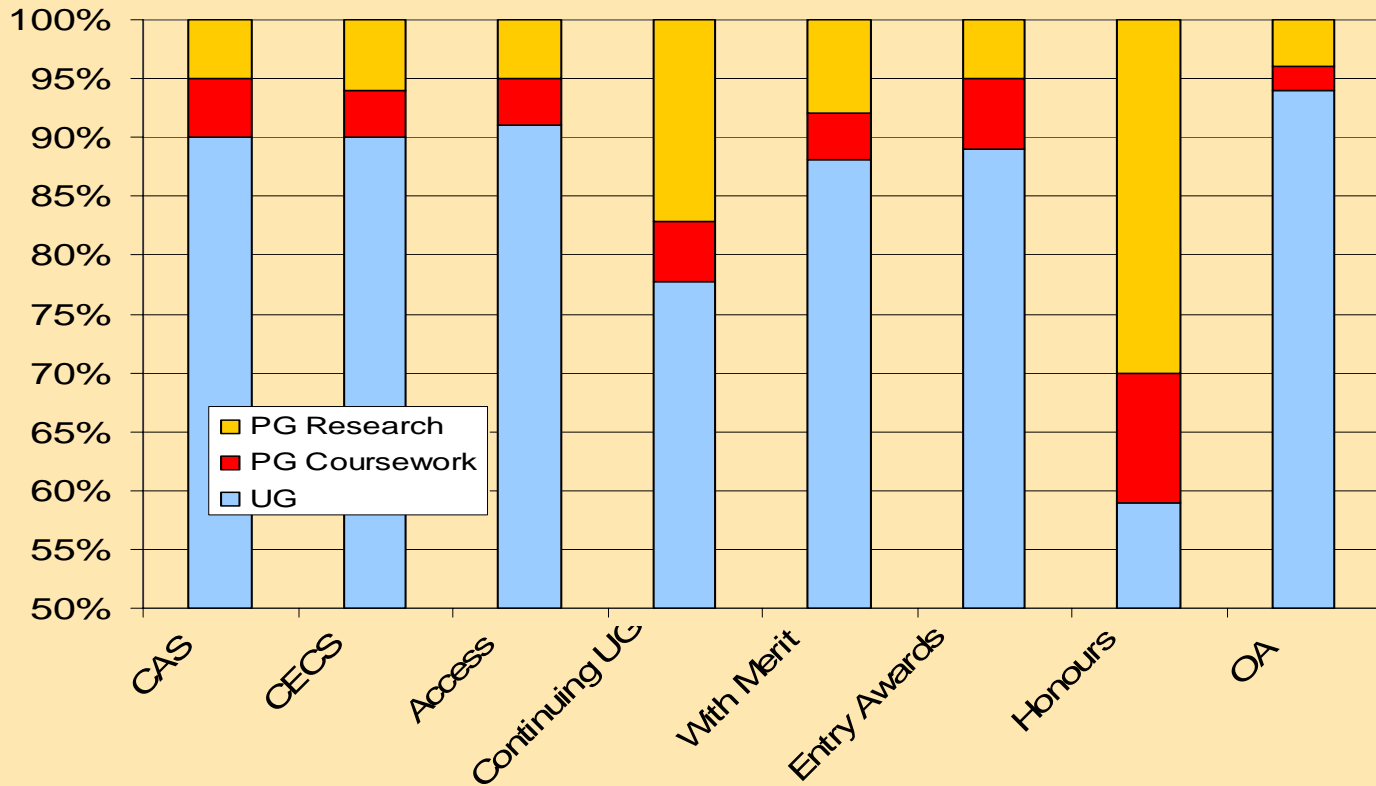


Final degree result





Highest degree level attempted





Other findings

- Gender balance of scholarships same as total UG population (60% female), except OA (55% male). OA is, however, tending to shift towards higher female numbers.
 - Most scholarship recipients enter the University immediately after completing high school, or very shortly thereafter
 - School type of scholarship recipients is statistically similar to total UG population (across all scholarship types)
 - Faculty distribution (across all scholarship types) is statistically similar to total UG population
-



Recommendations

- **Outstanding Achievement Scholarship** Increase duration to length of degree, including 1 additional honours year. Retain current value.
 - **Merit / Access Scholarships** Increase duration to length of degree, including 1 additional honours year. Retain current value.
 - **Honours Scholarships** Increase number offered from 50 to 100
 - **Continuing Scholarships** Change to offer 300 per annum, value \$2000. List on transcripts. New name.
-



Recommendations

- **Access Scholarships** Increase value to \$5000 per annum. Increase number of offers to 100 per annum
 - **Strategic Fund** Earmark \$500k for special initiative in latter part of 2007 as part of marketing strategy
 - **Interstate Relocation Scholarship** Offer relocation top-ups to OA and With Merit recipients from interstate.
 - **Enhanced student experience** Co-ordinate enhanced student experience opportunities available to scholarship recipients
 - **Academic transcripts** Record approved university scholarships on academic transcripts
-