



THE AUSTRALIAN KEY CENTRE IN TRANSPORT MANAGEMENT

Annual Report 2009

This Key Centre is a joint venture between:



THE UNIVERSITY OF
SYDNEY



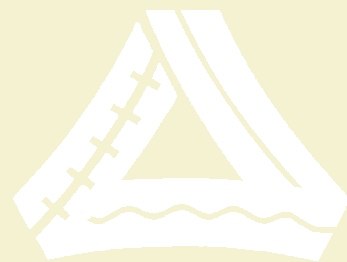
MONASH University
Engineering

THE AUSTRALIAN KEY CENTRE
IN TRANSPORT MANAGEMENT
ANNUAL REPORT

2009

CONTENTS

The Key Centre	2
Director's Report	3
2009 by the Numbers	4
2009 Highlights	5
Learning and Teaching	8
Research	18
Publications	22
Professional Honours and Engagements	32
In the Media	37
Our People	38



THE KEY CENTRE

The Commonwealth Key Centre of Teaching and Research in Transport Management is a joint venture between the Institute of Transport and Logistics Studies in the Faculty of Economics and Business at The University of Sydney (ITLS-Sydney) and the Institute of Transport Studies in the Department of Civil Engineering at Monash University, Melbourne (ITS-Monash). The Key Centre was established in 1995; for 14 years the Australian Federal government has continued to recognise it as a centre of excellence in teaching and research in all areas of transport management including supply chain management, transport economics, transport engineering, transport planning, and transport modelling.

OUR CONSTITUTION

The primary object of the Key Centre is to undertake graduate teaching, executive programs, grant and contract research and development in the fields of transport and supply chain management studies. The work of the Key Centre also has the following objects:

- To provide a focus for University work in areas of transport and logistics management and to establish an ambience attractive to those committed to excellence in graduate transport and logistics management programs and research.
- To collaborate, to the fullest extent possible, with other parties having an interest in transport and logistics management studies and its applications.
- To offer specialised training courses, workshops, short courses and seminars on topics of interest in the area of transport and logistics management.
- To seed the development, in Australia, of innovative ideas in transport and logistics policy and professional practice in which the Key Centre plays a role.

These Objectives are achieved by the Key Centre by:-

- developing and offering graduate transport and logistics management programs, industry programs, certificates, executive programs and short courses;
- bringing high quality transport and logistics management programs to people outside Sydney and Melbourne as well as widening the offerings of courses in Melbourne and Sydney through access to courses provided by both ITLS-Sydney and ITS-Monash;
- contributing to Australia's growing participation in the Asia Pacific region in a leadership role in transport and logistics management;
- widening the range of courses available for middle level professional managers in critical areas of transport and logistics management not currently served;
- equipping managers in all disciplines (i.e. , engineering, economics, planning), the small business sector and local government to succeed in the face of technological, economic and institutional change;
- building on the recognised need for stronger links between education of engineers and managers in transport and logistics management;
- undertaking research to develop state-of-the-art management practices and technical methods; and
- transferring the knowledge developed through research to client groups through the Key Centre's publications, workshops, conferences, seminars, and by participation in networks of transport and logistics managers and engineers.

DIRECTOR'S REPORT

Since its establishment in 1995 the Key Centre has gone from strength to strength across all areas of activity under the guidance of its Boards of Advice. I would like to acknowledge the commitment and dedication that the Chairs of these Boards – Dr Alastair Stone at ITLS-Sydney, and Professor John Stanley at ITS-Monash – bring to their roles. Our success is also, in no small measure, due to the extraordinary support we enjoy from the Dean of the Faculty of Economics and Business at The University of Sydney (Professor Peter Wolnizer) and the Deputy Vice-Chancellor, Research at Monash University (Professor Edwina Cornish).

I would also like to recognise the vital contribution that Associate Professor Geoff Rose has made as Director of ITS-Monash and congratulate ITS-Monash on reaching the 40th year of transport research and education programs at Monash University. This landmark was celebrated with a series of events in August that included the annual Odgen Transport Lecture and Awards and an anniversary dinner.

ITLS-Africa at the University of Johannesburg continues to develop as the third location of the Key Centre, with Professor Jackie Walters (Head of the Department of Transport and Supply Chain Management in the Faculty of Management) appointed as its first Director. In 2009 ITLS-Africa's Journal of Transport and Supply Chain Management received accreditation from the South African Department of Higher Education and Training (effective January 2010).

The quality partnership that the Key Centre has built over many years with both the public and private sectors of the transport and logistics industry continues to be a major factor in our success. Of particular note in 2009 were ITLS-Sydney's success in being part of a consortium that won the bid for a Volvo Research and Educational Foundations' Grant for a Centre of Excellence in Bus Rapid Transit (US \$3.5 million) to be established in 2010 and ITS-Monash's contract work for the Victorian

Department of Transport related to Bus Rapid Transit patronage drivers. These two areas of research activity give the two institutes in Australia the opportunity to lead on this very important initiative in building public transport infrastructure. In addition, ITS-Monash won an ARC Linkage Grant for research on optimising the design and implementation of public transport priority initiatives. That project, which is being undertaken in conjunction with the Victorian Department of Transport and Vic Roads, involves international collaboration with the University of Southampton in the UK.

Arising out of a staff retreat in April 2009 was a recommendation that ITLS-Sydney undertake a Transport Opinion Survey (TOPS) across Australia by telephone each quarter beginning in 2010. The project, which will be part-sponsored by Interfleet Technology, has several objectives: it is a self-funded research project to develop an index of consumer sentiment on transport issues; it will raise the profile of the Institute; and it will provide a resource for teaching.

I invite you to look at the fuller success of the Key Centre as set out in the following report.

As always, it has been a great pleasure to continue as Director of the Key Centre. The working environment brings a great deal of joy to me, overwhelmingly due to the team we have. A special thanks to all Key Centre staff.

Finally, I wish to thank my colleagues who have collectively supported me in the recognition I have received as the 2009 recipient of the International Association of Travel Behaviour Research Lifetime Achievement Award and the BusNSW Outstanding Contribution to Industry Award.



A handwritten signature in black ink, which appears to read 'D. Hensher'. The signature is fluid and cursive, written over a white background.

David A. Hensher
Key Centre Director

2009 BY THE NUMBERS

5	Fellows of Australian, American and British learned academies, societies, and institutes.	Years of transport education and research programs at Monash University.	40
8	Australian Research Council Industry Linkage (4) or Discovery Project (4) grants, with two won in 2009 .	Journal articles published including 28 in top tier journals (Australian Research Council's Excellence in Research for Australia A* or A rated).	41
14	Years of the Key Centre.	Of graduates on the Post Graduation Work Experience Program, ITLS-Sydney, offered permanent positions with their organisation at the end of their placement.	60%
20	Years of transport education and research at the University of Sydney.	Papers presented at prestigious conferences around the world from the USA and Canada, to Europe, South Africa, India, Iran, Hong Kong, Japan, New Zealand, and at home in Australia.	90
20	Years of the International Conference Series on Competition and Ownership in Land Passenger Transport, founded by Professor David Hensher and the late Professor Michael Beesley.	Professional development course enrolments in bus and coach operations, public transport planning, transport management, and discrete choice modelling.	>400
>25	Countries represented by the student body.	Undergraduate transport program unit of study enrolments.	500
33	Academic staff, including: our two Institute Directors; Australia's only Chairs in Public Transport (NSW and Victoria); Professors in Civil Engineering, Logistics and Supply Chain Management, and Transport Management; an Associate Professor in Transport Management; two Honorary Professors and one Honorary Associate Professor; and three Adjunct Professors.	Postgraduate coursework transport and logistics program unit of study enrolments.	1,927
37	PhD candidates with 10 scholarships from University, Australian Research Council, government or industry.	Funding from Volvo Research and Education Foundations for a Centre of Excellence in Bus Rapid Transit.	US \$3.5 million

2009 HIGHLIGHTS



40TH ANNIVERSARY OF THE TRANSPORT RESEARCH AND EDUCATION PROGRAM AT MONASH UNIVERSITY

The 40th anniversary was celebrated in style at a dinner held in the Monash Staff Club in August. The dinner celebrated the achievements of the program which traces its beginning to Ken Ogden's appointment in 1969 as Monash's first Lecturer in Transport. The anniversary dinner was strongly supported by the profession with 150 people attending. Professor Ed Byrne, who had just returned to Monash to take up the position of Vice Chancellor, welcomed the guests and Jim Bets, the Secretary of the Department of Transport, gave the dinner address. The contributions of the staff, students and industry were acknowledged over the course of the evening. The event provided an excellent opportunity for current and former staff and students, friends and colleagues to reconnect and reflect on the positive impact which the program has had on the transport profession in Australia. The 2009 Ogden Transport Lecture and the 40th Anniversary Celebration were supported by sponsorship provided by: the Victorian Government; RACV; Booz and Company; ARRB Group; Bus Association of Victoria; Connect East; Monash University Accident Research Centre; Sinclair Knight Merz; Traffix Group; Ventura Bus Lines and Vic Roads. Thanks are extended to those organisations for helping to make the celebration such a successful and memorable event.



Scenes from the 40th anniversary celebration dinner.

PROFESSOR DAVID HENSHER HONOURED with LIFETIME ACHIEVEMENT AWARD FROM THE INTERNATIONAL ASSOCIATION OF TRAVEL BEHAVIOUR RESEARCH (IATBR)



The IATBR lifetime achievement award was given to Professor Hensher in recognition of his exceptional

contribution to both IATBR as well as to the wider travel behaviour community. The award was presented to Professor Hensher at the 2009 IATBR conference in Jaipur, India. At the presentation David's contribution to the field was described as phenomenal, his work consistently being at the very edge of the research frontier where he is both a leader and a pioneer. To understand fully the meaning of this award, one need look no further than the names of the only other previous recipients, Frank Koppelman (Northwestern), Moshe Ben Akiva (MIT) and Ryuichi Kitamura (Kyoto).

and THE NSW BUS AND COACH ASSOCIATION AWARD FOR OUTSTANDING CONTRIBUTION TO THE INDUSTRY

Professor Hensher was presented with the award for Outstanding Contribution to the NSW Bus and Coach Industry at the BusNSW Industry Gala Dinner on 7 October 2009. The award was presented by Darryl Mellish, Executive Director, BusNSW on behalf of the NSW bus and coach industry.



Darryl Mellish (L) congratulates Professor Hensher on over 20 years of outstanding contribution to the bus and coach industry.

THE THREDBO 11 CONFERENCE



Conference delegates at Thredbo 11

The 11th International Conference on Competition and Ownership in Land Passenger Transport was hosted in 2009 by Delft University of Technology (The Netherlands) in September. The conference attracted 120 participants from 22 countries, representing transport authorities, operators and academia; the conference included seven parallel workshops discussing 87 papers on a wide range of topics. Selected papers from the conference will be published in 2010 in a special edition of the Elsevier journal, *Research in Transportation Economics*.



Alejandro Tirachini (R) receives the Michael Beesley Award from Professor Kenneth Gwilliam (Chair, Michael Beesley Award Committee) at Thredbo 11.

Alejandro Tirachini, a doctoral candidate at ITLS-Sydney, was awarded the Michael Beesley Award for the best workshop paper presented at the conference by an early career researcher, for his paper 'Comparing operator and users costs of light rail, heavy rail and bus rapid transit over a radial public transport network' (with D.A. Hensher and S.R. Jara-Diaz). The award is given in memory of the late Professor Beesley, co-founder of the conference series (with Professor David Hensher) and one of the most influential transport economists of his time.

ARRB-MONASH TRANSPORT PRIZE

2009 saw the launch of the new ARRB-Monash Transport Prize which was developed to promote excellence in postgraduate research in transport and to encourage transport research as a career for

young professionals. The award is based on assessment of an application outlining the difficulty, quality, innovation and impact of the research. The inaugural prize was awarded to Mahmoud Mesbah for his research which deals with optimising transit priority at the network level; Nirajan Shiwakoti received a special commendation for his research on modelling the behaviour of pedestrians under panic.

FRIEND OF THE LOGISTICS ASSOCIATION OF AUSTRALIA (LAA)



ITLS-Sydney formerly became a 'Friend of the Logistics Association of Australia' in 2009 and a number of joint activities, including a series of seminars and short executive courses, are planned for 2010 onwards. Jyotirmoyee Bhattacharjya, a doctoral candidate at ITLS-Sydney, was a finalist for the LAA's 2009 Logistics Development Award, for her paper: 'An interactions matrix as a basis for framing strategy in global value networks – an integrated approach to managing customer and supplier relationships'. The award has long been Australia's major logistics industry award and is sponsored by CHEP Asia-Pacific.

HONORARY APPOINTMENT



Professor Werner Delfmann was appointed Honorary Professor in Aviation Management at ITLS-Sydney. Werner Delfmann is Professor of Business Administration and Director of the Department of Business Policy and Logistics and Director of the Institute of Trade Fair Management, at the University of Cologne, Germany, where he is also Vice-Dean International Relations. Professor Delfmann has published more than 10 books and 100 articles in his field of research which include strategic and international logistics and supply chain management, management of logistics service providers, aviation management, transport and trade fair management, and operations research.

PUBLICATION SUCCESS

In 2009 the Key Centre published one edited book, ten book chapters, 41 journal articles and 21 working papers, as well as numerous consultancy reports and media contributions. In March the Federal Minister for Transport launched the Australian Davos Connection's publication 'Infrastructure 21: From incrementalism to transformational change', a report edited by Professor John Stanley (ITLS-Sydney and Chair of Advisory Board, ITS-Monash). The Minister had this to say: 'I congratulate the Australian Davos Connection on the production of this report. In particular, I recognise the efforts of Professor John Stanley who edited the publication. It's no mean feat capturing the thoughts and ideas of 100 plus delegates. You have done a remarkable job.' Also in 2009 Elsevier and Scopus reported that Dr Yibing Wang's (ITS-Monash) paper: 'Real-time freeway traffic state estimation based on extended Kalman filter: A general approach' (with M. Papageorgiou) had received the highest number of citations in the last five years among all Transportation Research Part B articles and the Emerald Literati Network presented Associate Professor Peter Lok (ITLS-Sydney) with the 2009 Highly Commended Award for his paper: 'An integrative model of organizational learning and social capital on effective knowledge transfer and perceived organizational performance', published in the Journal of Workplace Learning.

RESEARCH FUNDING SUCCESS

In 2009 the Key Centre won 18 new research grants. These included an Australian Research Council (ARC) linkage program grant for Professor Graham Currie (ITS-Monash) for research on 'Optimising the design and implementation of public transport priority initiatives' and an ARC discovery project grant for Dr John Rose (ITLS-Sydney) (with K.Howard, S. Jan, A. Cass, S.J. Chadban and R.D. Allen) for research on 'Community preferences for organ donation and allocation in Australia'. In addition, ITS-Monash won

grants from the Victorian Department of Transport, Vic Roads and the Bus Association of Victoria. Professor Graham Currie also received a major grant from the Faculty of Engineering, Monash University to establish the Social Research in Transport (SORT) Clearinghouse which aims to increase awareness of social issues in transport by making it easier to access research in this area. The Clearinghouse is a repository of research reports, research abstracts, and links to research findings.

VOLVO CENTRE OF EXCELLENCE IN BUS RAPID TRANSIT (BRT)



ITLS-Sydney is a partner in a consortium that has been awarded a US \$3.5 million,

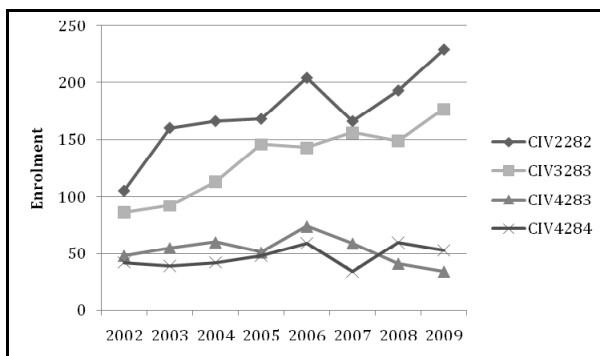
five-year grant, from the Volvo Research and Education Foundation for a Centre of Excellence for Bus Rapid Transit. The consortium is headed by Associate Professor Juan Carlos Muñoz of the Department of Transport Engineering and Logistics at Pontificia Universidad Católica de Chile. Collaborators in the Centre at ITLS-Sydney will be Professors David Hensher, Corinne Mulley and John Stanley. The Centre consortium also involves researchers from the Massachusetts Institute of Technology, Instituto Técnico Superior de la Universidad Técnica de Lisboa and The World Resources Institute Centre for Sustainable Transport. The Centre will provide research and analysis to support the successful deployment of existing and proposed BRT systems. It includes five programs: a BRT Observatory, which will produce case studies of BRT planning and implementation; a BRT Laboratory, which will analyse BRT system performance; a BRT Educational program, which will distribute knowledge gained from the Observatory and Laboratory to educate transport practitioners; and, Support in BRT Implementation and Dissemination, which will be provided via the worldwide network of Centre partners.

LEARNING AND TEACHING

UNDERGRADUATE

ITS-MONASH

ITS-Monash continues to play a key role in the delivery of the undergraduate transport units in the civil and environmental engineering programs. Across all undergraduate transport units of study ITS-Monash had responsibility for nearly 500 subject enrolments. ITS-Monash academics also deliver the units Engineering Investigations and Project Management for Civil Engineers in the civil and environmental engineering programs as well as delivering the transport component in the major group design subject - Civil Engineering Practice 4 – which is a core unit in the final year of the civil engineering degree.



Undergraduate unit enrolments, ITS-Monash

Units of study

- Transport and traffic engineering (CIV2282)
- Road engineering (CIV3283)
- Transport planning (CIV4283)
- Transport systems (CIV4284)

The **Traffic Group Undergraduate Scholarship** is generously offered to up to two students undertaking the Bachelor of Engineering who have an interest in and intend to pursue careers in transport engineering. In 2009 the scholarships were awarded to Shanika Ekanayake and David Beaton who receive financial assistance and a 12 week work placement with the Traffic Group.

Undergraduates at ITS-Monash also undertook the following Honours' projects in 2009 in the units CIV4210 Project A and CIV4211 Project B under the supervision of Professors Bill Young and Graham Currie, Associate Professor Geoff Rose and Dr Majid Sarvi: Share Bicycle Schemes; Powered-2-Wheelers as a Campus Commuter Mode; Greenhouse Gas Emissions from Transport; Developments in In-Vehicle Navigation Systems; Physiological Characteristics of Drivers; Design of Transit Stops; and Driver Behaviour at Intersections.

POSTGRADUATE COURSEWORK

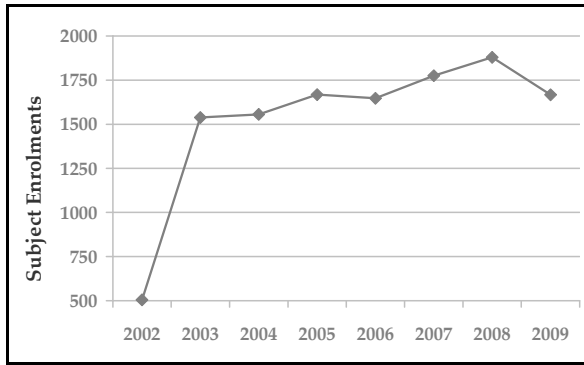
ITLS-SYDNEY



Students at ITLS-Sydney's Orientation held at the beginning of each Semester.

The demand for units of study remains very high. Many of our students are enrolled in a major in logistics and/or transport management via the Master of Commerce or in elective units in the Master of International Business as well as the transport and logistics degrees.

- Master of Transport or Logistics Management (8 units)
- Masters of Transport and Logistics Management (12 units)
- Master of Transport or Logistics Management combined with Master of Commerce (16 units), Master of International Business (12 units) or Master of Urban and Regional Planning (16 units)
- Graduate Diploma in Transport or Logistics Management (6 units)
- Graduate Certificate in Transport or Logistics Management (4 units)



Postgraduate coursework enrolments, ITLS-Sydney

Units of study

Total enrolments for 2009 are shown in brackets for each unit.

- Analysis Tools for Transport and Logistics [215]
- Aviation Management and Logistics [71]
- Geographical Information Systems for Planning and Logistics [33]
- Innovations in Logistics and Supply Chain [16]
- Intelligent Transport and Logistics Systems [31]
- International Logistics [79]
- Logistics and Supply Chain Management [241]
- Logistics Systems [61]
- Maritime Logistics [61]
- Organisational Logistics [196]
- Project Management in Supply Chains [23]
- Research Project [9]
- Reverse Logistics and Closed Loop SCM [10]
- Strategic Transport Modelling [26]
- Survey Design and Management [12]
- Sustainable Transport and Logistics Systems [39]
- Traffic Systems Management and Control [17]
- Transport and Logistics Economics [69]
- Transport Modes and Systems [57]
- Transport Policy [92]
- Value Chain Management [171]

NEW:

- Manufacturing Logistics [30]
- Public Transport Policy and Planning [22]
- Retail Logistics Management [86]

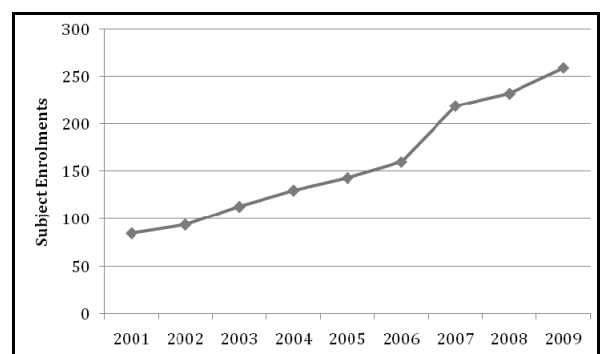
The Post Graduation Work Experience Program

This program offers ITLS-Sydney's brightest graduates the opportunity to gain some valuable real world experience with our industry partners in logistics and transport. Over 60% of our graduates have been offered permanent positions on completion. The success of the program lies in this win-win situation for graduates and employers; giving employers access to some of ITLS' brightest graduates and providing the graduates with opportunities in the real business world. Organisations that have provided placement include: AWA Ltd, Booz&Co, BusNSW, Busways, ComfortDelGro Cabcharge Pty Ltd, Hapag-Lloyd, Interfleet Technology, Parsons Brinckerhoff, PricewaterhouseCoopers, Saha International, Shipping Australia Ltd, the Transport Workers Union and Veolia Environmental Services.

ITS-MONASH

Enrolments grew again in 2009 with the postgraduate program in transport and traffic continuing to attract strong interest from throughout Australia and overseas.

- Master of Transport (8 units)
- Master of Traffic (8 units)
- Master of Infrastructure Engineering and Management (Distance Education) (8 units) [72 enrolments in 2009]
- Postgraduate Diploma in Transport and Traffic (8 units)
- Graduate Certificate in Transport and Traffic (4 units)



Postgraduate coursework enrolments, ITS-Monash

Units of study

- Case Studies in Transport
- Infrastructure Project Management
- Infrastructure Project and Policy Evaluation
- Intelligent Transport Systems
- Parking Policy and Design
- Public Transport Planning
- Quantitative Methods
- Road Safety Engineering
- Road Traffic: Engineering and Management
- Traffic Engineering Fundamentals
- Transport Network Models
- Transport Planning and Policy
- Transport Economics



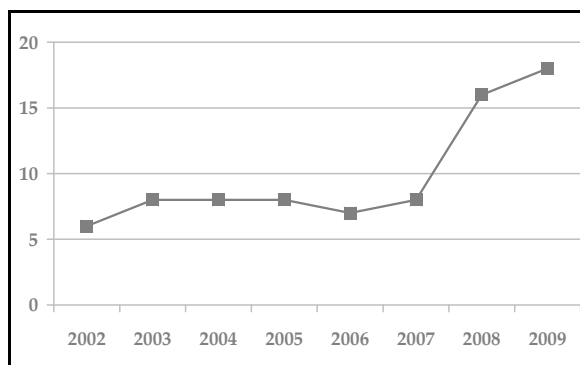
Graduates of the ITS-Monash's distance education program in transport and traffic with their Professors on graduation day (May 2009). L-R: Tim Rampton, Shan Shao, Queenie Hoi Wai Siu, Associate Professor Geoff Rose, Larna Procter, Haider Youse, and Professor Bill Young.

POSTGRADUATE RESEARCH

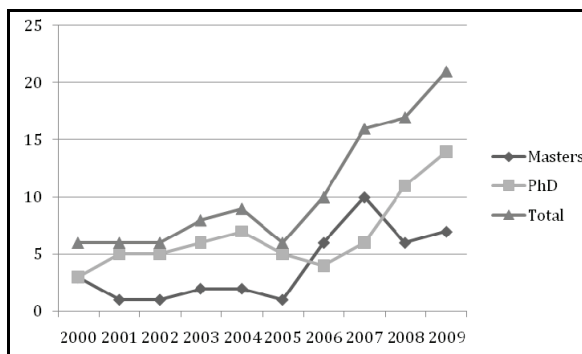


PhD students in the grounds of ITLS-Sydney

Enrolments in our higher degree by research programs (PhD at ITLS-Sydney; Master of Engineering Science and PhD at ITS-Monash) grew in 2009 bringing the total number of students in the Doctoral Programs to 39. Many of our students have won highly competitive scholarships from either Sydney or Monash University, from the Australian Research Council or from external industry bodies. Our students come from all over the world to research in a diverse range of transport and logistics areas; details of our students and their research topics are shown below.



PhD enrolments, ITLS-Sydney



Postgraduate research enrolments, ITS-Monash

DOCTOR OF PHILOSOPHY

Kayvan Aghabayk

Heavy vehicle car following behaviour

Iran Industry Scholarship

Md. Aftabuzzaman

Public transport performance measures of road traffic congestion relief

Elizabeth Barber

Strategic issues in supply chain management

Matthew Beck

Development of a behavioural system of stated choice models: Modelling behavioural, pricing and technological opportunities to reduce automobile energy levels

Faculty of Economics and Business Research Scholarship

Jyotirmoyee Bhattacharjya

Value chain network integration in practice: The antecedents and impact of interorganisational information and knowledge sharing interactions

International Postgraduate Research Scholarship

Yujie Cai

Supply chain interaction and overlap

Montathip Chanpum

A real time decision making policy for container vessel slot allocation in global empty container repositioning

Demi Chung

Optimising risk sharing: A quantitative study of the multidimensional nature of risk in private provision of road infrastructure

Ronald Henderson Research Foundation Scholarship, Accounting and Finance Association of Australia and New Zealand

Geoffrey Clifton

The role of frequency and connectivity in delivering enhanced bus systems in urban areas: Developing a network of corridor services

Andrew Collins

An examination of the role and impact of information search strategies on preference formation

Australian Postgraduate Award

Selby Coxon

Design strategies for the amelioration of anti-social behaviour on public transport

Daniel Csikos

Exploring commuter stress and public transport reliability

Simon Fifer

Hypothetical bias in stated choice experiments: Is it a problem? And if so, how do we deal with it?

Evan Gwee

Improving methodologies to estimate the economic impacts of agglomeration economies in urban rail projects

Singapore Land Transport Authority Scholarship

Qingjian Jiang

Travel tour modelling with multi-day GPS travel survey data

Victoria Johnson

The relationship of car ownership and social exclusion

Zheng Li

Valuing travel time savings and travel time reliability: Interfaces between behavioural/experimental economics and travel behaviour research

Faculty of Economics and Business Research Scholarship

Qian Liu

Investigating environmental/health externalities of transport

Hsin-Chi Lu

Value chain networks within the healthcare industry

Ehsan Mazloumi

Travel time prediction for road based public transport

Mahmoud Mesbah
Optimising transit priority at the network level

Mike Moffat
Designing pavements for multiple axle loads

Sara Moridpour
Modelling the lane changing behaviour of heavy vehicle drivers

Claudine Moutou
Understanding the consequences of small business reactions to sustainable transport initiatives in local town centres
Faculty of Economics and Business Research
Scholarship

Robbie Napper
Route bus bodywork design for specification diversity

Jeffrey Newton
Cost management in customer-supplier relationships and networks with a focus on activity based costing

Brendan Pender
Public transport scheduling

Joe Fai Poon
Analysing the effects of travel information on travellers' decision making and learning
Singapore Land Transport Authority
Scholarship

Hassan Sabzehali
Incorporating uncertainty into strategic model predictions

Mike Shackleton
A model for management of a public-good transport related research institutions

Nirijan Shiwakoti
Modelling pedestrian behaviour under panic

Amir Sobhani
Modelling intersection safety

Alejandro Tirachini
Optimal pricing strategies of transport externalities, with reference to car use and implications for public transport use
University of Sydney World Scholars Award

Roger Toleman
Tollroads and sustainability: Friends or foes?

Richard Yeo
Effects of large road freight vehicles on the performance of typical Australian road pavements: the performance of cemented pavement materials under heavy axle loading.

Ali Zavabeti
Analysis and prediction of driver behaviour

Zeyan Zhang
Supply chain disruption costs in the international maritime industry

MASTER OF ENGINEERING SCIENCE (RESEARCH) (ITS-Monash only)

Farhana Ahmed
Weather and climate change impacts on commuter cyclists

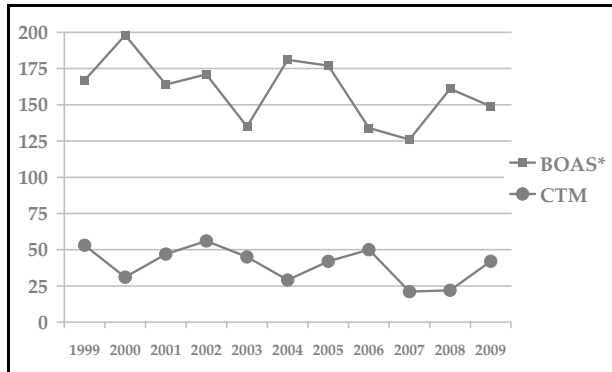
Paul Hamer
Reviewing the impacts of the Melbourne CBD parking levy

Karen Woo
Exploring transit ridership drivers in Toronto and Melbourne

PROFESSIONAL DEVELOPMENT

ITLS-SYDNEY

Bus and Coach Operator Accreditation Scheme and Certificate of Transport Management



*Bus and Coach Operator Scheme (BOAS) and Certificate of Transport Management (CTM) enrolments (*in 2007 the Certificate of Coach Management became the BOAS online course).*

The status of ITLS-Sydney as a premier provider of education with the NSW bus and coach industry is demonstrated in the strength of enrolments in the professional development and accreditation courses in 2009. The Bus and Coach Operator Accreditation Scheme (introduced in 2007 to replace the accreditation requirements under the Certificate of Coach/Transport Management) saw enrolments stabilise in 2009 with around 150 operators successfully completing the online course each year. Following review/refreshment of the program, 2009 saw a substantial rise in the number of participants in the Certificate of Transport Management with 42 enrolments, up from 22 in 2008.

The **Bus and Coach Operator Accreditation Scheme (BOAS)** online course is approved by NSW Transport and Infrastructure as meeting the accreditation requirement of competency to operate bus and coach services. Under the Passenger Transport Act (1990), operators of bus and coach services must be accredited by the Director General, NSW Transport and Infrastructure. One of the accreditation requirements is that applicants must be competent to carry on a bus service. To meet

the requirement of being competent to carry on a bus service, applicants must demonstrate they have the necessary knowledge and competence to carry on a bus service. The BOAS course includes four modules: i) Accreditation; ii) Management Information System; iii) Vehicle Maintenance Management System; and iv) Safety Management Systems. The BOAS course is delivered through online learning materials including notes, case studies, online quizzes, and a discussion board.

The **Certificate of Transport Management (CTM)** is a professional development course for staff in the bus and coach industry including operators, suppliers and consultants, designed to provide knowledge and skills in management, planning and policy areas that are central to the success of this industry. It introduces participants to the latest developments in the industry. The CTM is recognised as an important industry qualification for middle and senior management, and is an excellent opportunity for career development. The four day program includes presentations by industry representatives, specialist consultants and academic experts, designed to develop practical skills for the industry, as well as interactive exercises. The networking benefits are an important aspect of the CTM. The course content is reinforced by four assignments completed after the course. The CTM is supported by NSW Transport and Infrastructure, BusNSW, the State Transit Authority and private operators.

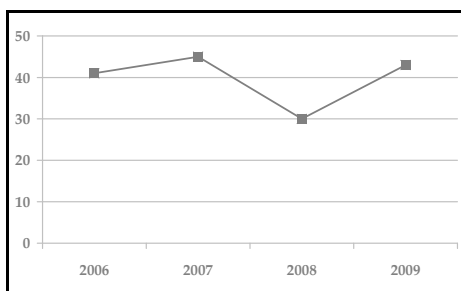
Discrete Choice Analysis and Choice Experiment Design



Course text: *Applied Choice Analysis: A Primer* (2005) by David Hensher, John Rose and Bill Greene, published by Cambridge University Press.

Almost without exception, everything human beings undertake involves a choice.

In recent years there has been a growing interest in the development and application of quantitative statistical methods to study choices made by individuals or groups with the purpose of gaining a better understanding both of how choices are made and of forecasting future choice responses. These extremely successful courses provide an unimposing introduction to the main techniques of choice analysis and the design of choice experiments. The courses, which began in 2006, are presented by world experts in the field: Professor David Hensher, Dr John Rose and Associate Professor Michiel Bliemer (Delft University of Technology, The Netherlands). The two week course attracts participants from all over the world from as far a field as South Africa and the UK. Abridged versions of these courses have also been presented in Portugal (2009), Italy (2008 and 2009), South Africa (2008), The Netherlands (2007), and Singapore (2007).

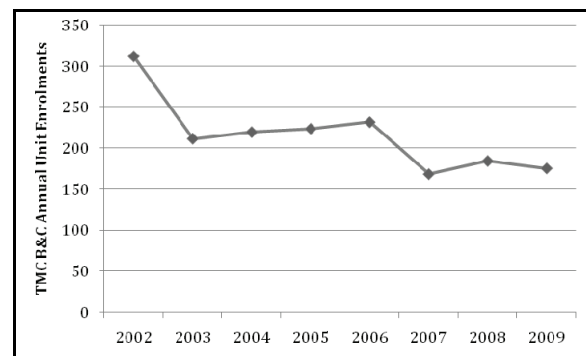


Discrete Choice Analysis and Choice Experiment Design enrolments, ITLS-Sydney

ITS-MONASH

Transport Management Course in Bus and Coach Operations

The Transport Management Course in Bus and Coach Operations was launched in 1999 as part of the accreditation framework for the industry in Victoria. Greater stability in the industry in 2009 resulted in a stabilisation in the annual enrolments in the course. Existing operators continue to support the course when they employ new staff or seek to upgrade staff qualifications.



Transport Management Course in Bus and Coach Operations enrolments, ITS-Monash

Public Transport Planning I and II – Network and Strategic Perspectives

Both industry short courses in public transport planning (I and II) were run in November. This year they were held concurrently in Adelaide and then in Melbourne. Attendance at the Melbourne course was the highest ever achieved for all of these short courses with participants coming from a variety of professional backgrounds, including public transport operators and state government agencies from throughout Australia and overseas. The course was presented by Professor Graham Currie and Professor Avi Ceder from the University of Auckland. Topics covered include strategic perspectives on planning public transport, performance monitoring and network design as well as operational perspectives.

STUDENT AWARDS

ITLS-SYDNEY

The 2009 Awards Night was held on 2 May in the Forum Restaurant of the Darlington Centre, the University of Sydney. The evening is an opportunity to celebrate the success of the Institute with our staff, students, Board of Advice, industry partners and the sponsors of prizes. Guests were welcomed by Professor David Hensher and awards were presented by representatives of our sponsors, BusNSW, the Chartered Institute of Logistics and Transport, and the Logistics Association of Australia, as well as by our special guest the Honourable Gladys Berejiklian MP, Shadow Minister for Transport NSW who also gave the closing address. There were also short speeches from the University of Sydney's Professor Corinne Mulley, NSW Chair in Public Transport (ITLS-Sydney) and Professor Peter Wolnizer, Dean of the Faculty of Economics and Business.

The Bus and Coach Association NSW Prize
For the best overall performance in the Certificate of Transport Management program
Coralie Moller

Ken Hillyar Award (Chartered Institute of Logistics and Transport)
Awarded to the best student in a masters program with a major in transport or logistics management
Claudia Bottini



Claudia Bottini (R) receives the Ken Hillyar Award from Julie Dryden, Vice Chair, NSW Section, CILT.



Sir Hudson Fysh Award (Chartered Institute of Logistics and Transport)
Awarded to the best student in a masters program with a major in transport or logistics management
Yang Liu

The Logistics Association of Australia Prize
For outstanding achievement in the logistics program
Andrew Emmett



Andrew Emmett (R) receives The Logistics Association of Australia Prize from Joe Famularo, President, LAA

The Mrs MA Ching Prize
For outstanding achievement in the graduate program in transport or logistics
Seamus Christley



Seamus Christley (R) is congratulated by Professor David Hensher on winning the Mrs MA Ching Prize.

The Institute of Transport and Logistics Studies Prize
For research excellence in transport or logistics
Matthew Beck



Matthew Beck (R) receives the Institute of Transport and Logistics Studies Prize from Gladys Berejiklian MP.

ITS-MONASH



Prize winners and prize sponsors following the awards ceremony held in conjunction with ITS-Monash's annual Ogden Transport Lecture.

In 2009, the presentation of awards to outstanding students in the Transport Management Course in Bus and Coach Operations and the postgraduate program in Transport and Traffic was again held in conjunction with the annual Ogden Lecture. This high profile evening was held at the State Library of Victoria Theatre in Melbourne in August and provided the ideal forum in which to recognize the achievements of our most successful students. A large audience participated in the evening, including senior officers of the Department of Infrastructure and the Executive Director of the Bus Association of Victoria, as well as many industry, government and academic representatives. The awards are sponsored by industry and government and recognise outstanding performance of bus and coach operators completing subjects in the course.

The GHD Highway Design Prize

Awarded to the group of Bachelor of Engineering students who submitted the best highway design
Peter Bach, Monique de Moel, Jenny Leung, Oscar Sun

The Richardson Prize in Transport

Awarded to the Bachelor of Engineering student showing the greatest proficiency in one transport elective and project
Nick Hurley

The Traffix Group Prize

Awarded to the Bachelor of Engineering student showing the greatest proficiency in Level 4 transport engineering elective subjects
Leigh Furness and Nick Hurley

The VicRoads Prize in Transport Engineering

Awarded to the postgraduate student who has achieved the highest average mark in their coursework units.

Anthony Barton



Anthony Barton (R) is awarded the Vic Roads Prize in Transport Engineering by Rob Fremantle, Executive Director, Network and Asset Planning, VicRoads.

ARRB-Monash Prize for Postgraduate Transport Research

For excellence in postgraduate research in transport

Mahmoud Mesbah
Special commendation
Nirajan Shiwakoti



Mahmoud Mesbah (L) is presented the ARRB-Monash Prize for Postgraduate Transport Research by Gerard Waldron, Managing Director, ARRB Group.

Transport Management Course in Bus and Coach Operations:

Bus Association of Victoria Award

For the best overall performance in the Transport Management Course in Bus and Coach Operations (bus and coach operations, AO accreditation)

Tim Watters

Bus Association of Victoria Award

For the best overall performance in the Transport Management Course in Bus and Coach Operations (charter and coach operations, AC accreditation)

Clint Comelli

Department of Infrastructure Small Operator Award

For unit: Introduction to legislation and operations

May Andrew

iComply, AC/AO Operator Award

For unit: Introduction to Legislation and Operations

Bernard McNamara

The Pitcher Partners Large Operator Award

For unit: Financial Management

Gerard Gleeson

Grenda Transit Large Operator Award

For unit: Human Resource Management

The Ventura National Bus Award

For unit: Marketing, Planning and Operations

Jan Gielnik

RESEARCH

FUNDING

INTERNATIONAL

Dr Yibing Wang

Real-time monitoring, surveillance and control of road networks under adverse weather conditions
European Commission's Cooperation in Science and Technologies (COST) Program [2008-2011]

Professor Peter Stopher

Greater Cincinnati household travel survey
Ohio Department of Transportation, Ohio, USA [2008-11: \$200,378]

AUSTRALIAN RESEARCH COUNCIL

Professor Graham Currie

Investigating transport disadvantage, social exclusion and well being in metropolitan, regional and rural Victoria
ARC Industry Linkage Program [2006-2010: \$1.6M]

NEW: Professor Graham Currie
Optimising the design and implementation of public transport priority initiatives
ARC Industry Linkage Program [2009-13: \$740,000]

Associate Professor Stephen Greaves
Modelling the environmental impacts of commercial vehicle tours and freight management policies in urban areas.
ARC Discovery Project [2008-10: \$200,454]

Professor David Hensher
Integrating accident and travel delay externalities in an urban speed reduction context
ARC Discovery Project [2007-9: \$239,394]

Professor David Hensher (with R.A. Letcher and D. Graham)
Assessing willingness to pay for urban water, wastewater, gas and electricity delivery service standards
ARC Industry Linkage Program [2006-9: \$191,000]

Professor David Hensher (with P. Stopher, S. Greaves and R.W. Whelan)
Exploring behavioural responses of motorists to exposure-based charging mechanisms
ARC Industry Linkage Program [2007-9: \$230,000]

NEW: Dr John Rose (with K.Howard, S. Jan, A. Cass, S.J. Chadban and R.D. Allen)
Community preferences for organ donation and allocation in Australia
ARC Discovery Project [2009-11: \$240,000]

Professor Peter Stopher
Developing tour based models for an integrated land use, transport and environment model system for Australia
ARC Discovery Project [2007-9: \$207,000]

STATE GOVERNMENT

NEW: Professor Graham Currie
SmartBus ridership drivers R&D project
Victorian Department of Transport [2009: \$40,000]

Professor Bill Young (with B. Corben, N. Candappa and M. Sarvi)
Intersection Design for Safety
Vic Roads [2008-10: \$2M]

NEW: Associate Professor Geoff Rose
Eco-driving trial design, evaluation and reporting
Victorian Department of Transport [2009-10: \$74,525]

NEW: Dr Yibing Wang
Real-time traffic state estimation, incident detection, and detector fault diagnosis for large-scale freeway systems in Melbourne
Vic Roads [2009-10: \$40,000]

NEW: Dr Majid Sarvi
Real time network traffic management decision support – Pilot study project
Vic Roads [2009: \$22,000]

NEW: Dr Yibing Wang
Intelligent local ramp metering controller design in the case of multiple bottlenecks downstream of a metered on-ramp
Vic Roads [2009: \$15,000]

INDUSTRY

NEW: Professor Graham Currie
Victorian Bus Industry 2009 Survey
Bus Association of Victoria [2009: \$25,000]

UNIVERSITY

NEW: Professor Graham Currie
Social Research in Transport (SORT)
Clearinghouse
Faculty of Engineering, Monash University
[2009-11: \$207,000]

NEW: Associate Professor Stephen Greaves
Development of a modal contestability index for transport options
Faculty of Economics and Business,
The University of Sydney [2009: \$11,224]

NEW: Professor David Hensher
Explaining errors in toll road traffic forecasts
Faculty of Economics and Business,
The University of Sydney [2009: \$12,500]

NEW: Professor Corinne Mulley
Flexible transport services: Identifying and overcoming barriers to implementation in NSW
Faculty of Economics and Business,
The University of Sydney [2009: \$9,966]

NEW: Dr Sean Puckett
Interdependent decision making in a carbon-constrained economy
Faculty of Economics and Business,
The University of Sydney [2009: \$9,657]

NEW: Dr John Rose
Preferences for acute health care delivery for older people in residential aged care: A pilot study
Faculty of Economics and Business,
The University of Sydney [2009: \$11,250]

NEW: Professor Peter Stopher
Travel time budgets and GPS data
Faculty of Economics and Business,
The University of Sydney [2009: \$11,277]

NEW: Professor David Walters (with P. Lok and J. Rhodes)
A value chain framework through dynamic capabilities and networking to sustain competitiveness and performance in organizations – a golden pond strategy
Faculty of Economics and Business
The University of Sydney [2009: \$7,312]

NEW: Dr Yibing Wang
Local ramp metering in the presence of random downstream bottlenecks
Faculty of Engineering, Monash University
[2009: \$20,000]

NEW: Dr Yibing Wang
Traffic state estimation under traffic flow inhomogeneity
Faculty of Engineering, Monash University
[2009: \$20,000]

SEMINARS and PUBLIC LECTURES

ITLS-SYDNEY

Leadership and Policy Seminar Series

7 April 2009

Evaluating the cost of PPPs in transport

Professor Jean Shaoul, Manchester Business School, University of Manchester, UK

21 April 2009

The future of the airline industry?

Peter Harbison, Executive Chairman, Centre for Asia Pacific Aviation

5 May 2009

The economics of the taxi industry and taxi reform in NSW

Peter Abelson, Managing Director, Applied Economics P/L

19 May 2009

Climate change and land transport

Professor John Stanley, Adjunct Professor, ITLS-Sydney and Bus Industry Confederation Senior Fellow in Sustainable Land Transport

9 June 2009

Externalities of rail travel and how these can be reflected in fare setting

Eric Groom, Principal Advisor, Independent Pricing and Regulatory Tribunal; Mike Smart, LECC

22 July 2009

How road safety varies across Europe – experience with available data

Professor Richard Allsop, Professor of Transport Studies, University College London, UK



Professor Richard Allsop, Transport Studies, University College London, UK

4 August 2009

Promoting social inclusion in a deregulated environment: extending accessibility in areas of low demand

Professor Corinne Mulley, Chair in Public Transport, ITLS-Sydney

1 September 2009

Transport and the carbon pollution reduction scheme

Phil Potterton, Executive Director, Bureau of Infrastructure, Transport and Regional Economics; Department of Infrastructure, Transport, Regional Development and Local Government

17 November 2009

Personal Rapid Transit systems: A sustainable approach to transport

Richard Lowson, Australian Representative of Advanced Transport Systems

ITLS-Sydney also received visits from Professor Knut Haase (Dresden University of Technology, Germany), Professor Riccardo Scarpa (University of Waikato, NZ), Professor Jean Shaoul (University of Manchester, UK), Professor Dan Sperling (Institute of Transportation Studies, University of California, Davis, USA), Associate Professor Michiel Bliemer (Delft University of Technology, The Netherlands), Dr Gustav Nielsen (Institute of Transport Economics, Norwegian Centre for Transport Research, Norway), as well as visiting researchers from France, India, The Netherlands, and Switzerland.

Annual Ogden Transport Lecture



L-R: Professor Dan Sperling, Professor Edwina Cornish (Deputy Vice Chancellor Research, Monash University) and Associate Professor Geoff Rose at the 2009 Ogden Transport Lecture.

The Ogden Transport Lecture was initiated in 2001 to recognise Professor Ken Ogden's role in founding the transport program at Monash in 1969. Professor Dan Sperling delivered the 2009 Ogden Transport Lecture at the State Library theatre on 20 August. Speaking on the topic of 'Towards 2 Billion Cars: Transforming cars, fuel and mobility', Professor Sperling described the challenges and opportunities associated with the car based mobility system which dominates urban areas in the developed world. He described the role which electric vehicles will play in the future and the importance of establishing a low carbon fuel standard to ensure that when stocks of petroleum decline they are not substituted by high carbon equivalents (e.g. oil from tar sands). He also outlined the role that information and communications technologies will have in underpinning the transformation of urban mobility systems to include access to more dynamic information on service availability and the use of the technology to support on-demand services.

Seminar Series

13 March 2009

Estimating emissions from dynamic traffic flow: Connecting emission models and traffic simulation models

Professor Hiroyuki Oneyama
Tokyo Metropolitan University, Japan

3 April 2009

The effect of multiple axle group loads on flexible pavement performance

Michael Moffat
Principal Research Engineer, ARRB Research

24 April 2009

Emerging types of private vehicles and their implications for road system management

Associate Professor Geoff Rose
ITS-Monash

19 June 2009

Sustainable research structures

Professor Bill Young
ITS-Monash

10 July 2009

A new sub-area division method for urban arterial green wave signal control

Ningning Chen
Research Centre of Intelligent Transportation Systems, Sun Yat-sen University, China

19 August 2009

Sustainable transport research at the University of California, Davis

Professor Dan Sperling
University of California, Davis, USA

9 November 2009

A combined lane for trucks and buses: Is this the best form of bus priority?

Professor Corinne Mulley
Chair in Public Transport, ITLS-Sydney

PUBLICATIONS



Handbooks in Transport
edited by Professor David
Hensher and Professor
Kenneth Button, published
by Elsevier Science and
Emerald Science, 2005.

EDITED BOOK

Stanley, J., Longva, F., Veeneman, W. and van de Velde, D. (2009) *Proceedings of the International Conference on Competition and Ownership in Land Passenger Transport – A successful contractual setting*, NGInfra Foundation, Delft, Netherlands.

BOOK CHAPTERS

Bliemer, M. and Rose, J.M. (2009) 'Designing stated choice experiments: State of the art' in *The expanding sphere of travel behaviour research: Selected papers from the 11th International Conference on Travel Behaviour Research*, ed. R. Kitamura, T. Yoshii and T. Yamamoto, Emerald Group Publishing Limited, Bingley, UK, pp. 499-538.

Czinkota, Moffett, Ang and Lok, P. (2009) 'Chapters 13 and 14' in *Fundamentals of International Business – Asia Pacific edition*, Wiley, Singapore.

Greaves, S.P. (2009) 'Development and application of a strategic modelling tool for the evaluation of air pollution mitigation strategies for urban freight in Sydney' in *Urban Transport XV- Urban Transport and the Environment*, ed. C.A. Brebbia, WIT Press, Southampton, UK, pp. 529-40.

Hensher, D.A., Rose, J.M. and Puckett, S.M. (2009) 'Selective developments in choice analysis and a reminder about the dimensionality of behavioural analysis' in *The Expanding Sphere of Travel Behaviour Research: Selected Papers from the 11th International Conference on Travel Behaviour*

Research

, ed. R. Kitamura, T. Yoshii and T. Yamamoto, Emerald Group Publishing Limited, Bingley, UK, pp. 237-76.

Kemfert, C. and Truong, T. (2009) 'Energy-economy-environment modelling: a survey' in *International Handbook on the Economics of Energy*, ed. J.Evans and L.Hunt, Edward Elgar, Cheltenham, UK, pp. 367-82.

Papageorgiou, M., Papamichail, I., and Wang, Y. (2009). 'The role of macroscopic modelling in simulation, surveillance and control of motorway network traffic' in *Transport Simulation – Beyond Traditional Approaches*, edited by Edward Chung and Andre-Gilles Dumont, the EPFL Press, 2009, pp. 3-25.

Puckett, S.M. and Hensher, D.A. (2009) 'Modelling interdependent behaviour as a sequentially administered stated choice experiment: Analysis of variable user charging and agent influence in freight distribution chains' in *The Expanding Sphere of Travel Behaviour Research: Selected Papers from the 11th International Conference on Travel Behaviour Research*, ed. R. Kitamura, T. Yoshii and T. Yamamoto, Emerald Group Publishing Limited, Bingley, UK, pp. 539-70.

Stopher, P. (2009) 'Collecting and processing data from mobile technologies' in *Transport Survey Methods: Keeping Up With a Changing World*, ed. P. Bonnel, M. Lee-Gosselin, J. Zmud and Jean-Loup Madre, Emerald Group Publishing Limited, London, UK, pp. 361-91.

Stopher, P. (2009) 'The travel survey toolkit: Where to from here?' in *Transport Survey Methods: Keeping Up With a Changing World*, ed. P.Bonnel, M. Lee-Gosselin, J. Zmud and Jean-Loup Madre, Emerald Group Publishing Limited, London, UK, pp. 15-46.

JOURNAL ARTICLES

- Aditjandra, P.T., Mulley, C. and Nelson, J.D. (2009) 'Extent to which sustainable travel to work can be explained by neighbourhood design characteristics', *Transportation Research Record*, 2134:114-22.
- Aditjandra, P.T., Mulley, C. and Nelson, J.D. (2009) 'Neighbourhood design impact on travel behaviour: A comparison of US and UK experience', *Projections: MIT Journal of Planning*, 9 - Planning for Sustainable Transportation: an International Perspective: 29-56.
- Aftabuzzaman, M Currie G and Sarvi M (2010) 'Evaluating congestion relief impacts of public transport in monetary terms'. *Journal of Public Transportation*, 13(1).
- Archer, J. and Young W. (2009). 'Signal treatments to reduce heavy vehicle crash-risk at metropolitan highway intersections' *Accident Analysis and Prevention*. 41, 404-411.
- Beharry-Borg, N., Hensher, D.A. and Scarpa, R. (2009) 'An analytical framework for joint vs. separate decisions by couples in choice experiments: The case of coastal water quality in Tobago', *Environmental and Resource Economics*, 43(1):95-117.
- Bliemer, M., Rose, J.M. and Hensher, D.A. (2009) 'Efficient stated choice experiments for estimating nested logit models', *Transportation Research Part B: Methodological*, 43(1):19-35.
- Clement, F., Orange, D., Williams, M., Mulley, C. and Epprecht, M. (2009) 'Drivers of afforestation in Northern Vietnam: Assessing local variations using geographically weighted regression', *Applied Geography*, 29(4):561-76.
- Currie G (2009) 'A review of Melbourne rail franchising reforms', *Journeys (Singapore Land Transport Authority Academy)*, 3:36-43.
- Currie, G. (2009) 'Australian urban transport and social disadvantage' *Australian Economic Review Special Forum Edition on Urban Transport*, *The Australian Economic Review*, 42(2):201-8
- Currie, G. (2009) 'Improving driver compliance with streetcar transit lanes using a public education campaign' *Transportation Research Record*, 2112:62-9
- Currie, G. and Gook, M. (2009) 'Measuring the performance of transit passenger information web sites' *Transportation Research Record*, 2110:137-48.
- Currie, G. and Loader, C. (2009) 'High ridership growth from extended transit service hours – An exploration of causes' *Transportation Research Record*, 2110:120-7.
- Currie, G. (2010) 'Quantifying spatial gaps in public transport supply based on social needs', *Journal of Transport Geography*, 18:31-41
- Currie, G., Richardson A.J., Smyth, P., Dianne Vella-Brodrick. D., Hine, J, Lucas, K., Stanley, J., Jenny Morris, Kinnear, R., Stanley, J. (2009) 'Investigating links between transport disadvantage, social exclusion and well-being in Melbourne—Preliminary results' *Transport Policy*, 16(3):97-105.
- Del Mistro, R. and Hensher, D.A. (2009) 'Upgrading informal settlements in South Africa: Policy, rhetoric and what residents really value', *Housing Studies*, 24(3):333-54.
- Hensher, D.A. and Rose, J.M. (2009) 'Simplifying choice through attribute preservation or non-attendance: Implications for willingness to pay', *Transportation Research Part E: Logistics and Transportation Review*, 45(4):583-90.
- Hensher, D.A. and Rose, J.M. (2009) 'Toll product preferences and implications for alternative payment options and going cashless', *Transportation*, 36(2):131-45.
- Hensher, D.A., Rose, J.M., de Dios Ortuzar, J. and Rizzi, L.I. (2009) 'Estimating the willingness to pay and value of risk reduction for car occupants in the road environment', *Transportation Research Part A: Policy and Practice*, 43(7):692-707.
- Hensher, D.A. and Stanley, J. (2009) 'What if petrol increased to \$10 per litre in Melbourne? Implications on Travel Behaviour and Public

- Transport Demand', *Road and Transport Research*, 18(3):61-8.
- Hess, S. and Rose, J.M. (2009) 'Allowing for intra-respondent variations in coefficients estimated on repeated choice data', *Transportation Research Part B: Methodological*, 43(6):708-19.
- Hess, S. and Rose, J.M. (2009) 'Should reference alternatives in pivot design SC surveys be treated differently?', *Environmental and Resource Economics*, 42(3):297-317.
- Johnson V Currie G and Stanley J (2009) 'A critique of zero car ownership as a measure of disadvantage' *Social Indicators Research Journal* (Published On Line Sept 2009, DOI 10.1007/s11205-009-9510-1)
- Li, Z. and Hensher, D.A. (2009) 'Road freight demand in Australia: Key drivers and forecasts', *Road and Transport Research*, 18(2):15-26.
- Li, Z. and Hensher, D.A. (2009) 'Technical note: The ageing transport workforce', *Road and Transport Research*, 18(2):55-6.
- Loader, C. and Stanley, J. (2009) 'Growing patronage and addressing transport disadvantage – the Melbourne experience', *Transport Policy*, 16(3):106-14.
- Mulley, C. (2009) 'Can quality and deregulation go hand in hand?', *Journeys* (Singapore Land Transit Authority Academy), 3:14-22.
- Mulley, C. and Nelson, J.D. (2009) 'Flexible transport services: A new market opportunity for public transport', *Research in Transportation Economics*, 25(1):39-45.
- Pinjari, A.R., Bhat, C.R. and Hensher, D.A. (2009) 'Residential Self-Selection Effects in an Activity Time-Use Behavior Model', *Transportation Research Part B: Methodological*, 43(7):729-48.
- Puckett, S.M. and Hensher, D.A. (2009) 'Revealing the extent of process heterogeneity in choice analysis: An empirical assessment', *Transportation Research Part A: Policy and Practice*, 43(2):117-26.
- Rose, J.M. and Bliemer, M. (2009) 'Constructing Efficient Stated Choice Experimental Designs', *Transport Reviews*, 29(5):587-617.
- Rose, J.M., Hensher, D.A., Caussade, S., de Dios Ortuzar, J. and Jou, R.-C. (2009) 'Identifying differences in willingness to pay due to dimensionality in stated choice experiments: a cross country analysis', *Journal of Transport Geography*, 17(1):21-9.
- Rose, J.M. and Hess, S. (2009) 'Dual-Response Choices in Pivoted Stated Choice Experiments', *Transportation Research Record*, 2135:25-33.
- Sarvi M. (2009) 'Improving the efficiency of freight traffic at congested freeway merging sections' *Transportation Letters, The International Journal of Transportation Research*, 1(4):309-22.
- Scarpa, R., Gilbride, T.J., Campbell, D. and Hensher, D.A. (2009) 'Modelling attribute non-attendance in choice experiments for rural landscape valuation', *European Review of Agricultural Economics*, 36(2):151-74.
- Seethaler R. and Rose, G. (2009) 'Using odometer readings to assess VKT changes associated with a voluntary travel behaviour change program'. *Transport Policy*, 16:325-34.
- Shiwakoti, N., Sarvi. M., Rose, G., and Burd, M. (2009) 'Enhancing the safety of pedestrians during emergency egress: Can we learn from biological entities?' *Transportation Research Record*, 2137:31-7.
- Stanley, J. and Hensher, D.A. (2009) 'Policy forum: Urban transport- Urban transport in Australia: Has it reached breaking point?', *The Australian Economic Review*, 42(2):190-200.
- Stopher, P., Clifford, E., Swann, N. and Zhang, Y. (2009) 'Evaluating voluntary travel behaviour change: Suggested guidelines and case studies', *Transport Policy*, 16(6): 315-24.
- Walters, D. (2009) 'Understand the value chain network, understand the market, understand

the industry and understand the customer', *Journal of Transport and Supply Chain Management*, 3(1):96-119.

Wang, Y., Papageorgiou, M., Messmer, A., Coppola, P., Tzimitsi, A. and Nuzzolo, A. (2009) 'An adaptive freeway traffic state estimator'. *Automatica*, 45(1):10-24.

Young, W. and Archer, J. (2009). 'Traffic microsimulation modelling to study a traffic signal incident reduction function'. *Transportation Research Record*, 2103:80-7.

CONFERENCE PAPERS

Aditjandra, P.T., Mulley, C. and Nelson, J.D. (2009) 'The extent to which sustainable travel to work can be explained by neighbourhood design characteristics', 88th Transportation Research Board Annual Meeting TRB 2009, Washington, D.C., USA, 11-15 January.

Aftabuzzaman, M., Currie, G. and Sarvi, M. (2009) 'Understanding congestion relief impacts of public transport in monetary terms – Evidence from Australasia, Europe and US' Transportation Research Board, Washington D.C., USA, 10-14 January.

Archer, J. and Young, W. (2009). 'The application of a micro-simulation model to study the safety performance of a traffic signal incident-reduction function'. *Proceedings of the 88th Annual Meeting of Transportation Research Board*, Washington, USA, pp.1-12.

Bain, S. and Hensher, D.A. (2009) 'Developing disaggregate transport prediction models from aggregate survey data', 32nd Australasian Transport Research Forum, Auckland, NZ, 29 September - 1 October.

Bain, S., Hensher, D.A. and Li, Z. (2009) 'R-TRESIS: Developing an integrated transport and land use model system for regional New South Wales', 12th International Conference on Travel Behaviour Research, Jaipur, India, 13-18 December.

Bajwa S., Weerasooriya G., Sarvi M., Kuwahara M. (2009) 'An Algorithm for transit signal priority systems'. 4th HKSTS international conference, Hong Kong.

Bajwa S., Weerasooriya G., Sarvi M., Kuwahara M. (2009) 'An improved algorithm for transit signal priority systems'. Transportation Research Board, Washington D.C., USA.

Beck, M., Rose, J.M. and Hensher, D.A. (2009) 'The accuracy of proxy responses in a stated choice setting', 12th International Conference on Travel Behaviour Research, Jaipur, India, 13-18 December.

Beck, M., Rose, J.M. and Hensher, D.A. (2009) 'Behavioural responses to vehicle emissions', 12th International Conference on Travel Behaviour Research, Jaipur, India, 13-18 December.

Beck, M., Rose, J.M. and Hensher, D.A. (2009) 'Modelling group decision making dynamics: Extensions to the IACE methodology', 12th International Conference on Travel Behaviour Research, Jaipur, India, 13-18 December.

Bhattacharjya, J. (2009) 'Towards a shaping platform for facilitating B2B interactions in value chain networks', *Proceedings of the Seventh Annual International Symposium on Supply Chain Management – Managing Supply Chain Networks During Uncertain Times*, Toronto, Canada, 28-30 October.

Bliemer, M. and Rose, J.M. (2009) 'Efficiency and sample size requirements for stated choice experiments', 88th Transportation Research Board Annual Meeting, Washington, D.C., USA, 11-15 January.

Bliemer, M. and Rose, J.M. (2009) 'Sample optimality in the design of stated choice experiments', *European Transport Conference*, Leeuwenhorst, The Netherlands, 5-7 October.

Bliemer, M. and Rose, J.M. (2009) 'Serial choice conjoint analysis for estimating discrete choice models', *International Choice Modelling Conference*, Yorkshire, UK, 30 March-1 April.

Bliemer, M., Rose, J.M. and Beelaerts van Blokland, R. (2009) 'Experimental design influences on stated choice outputs', *European Transport Conference*, Leeuwenhorst, The Netherlands, 5-7 October.

- Bliemer, M., Rose, J.M. and Beelaerts van Blokland, R. (2009) 'Experimental design influences on stated choice outputs', 12th International Conference on Travel Behaviour Research, Jaipur, India, 13-18 December.
- Campbell, D., Scarpa, R., Rose, J.M. and Hess, S. (2009) 'Using finite mixture models to accommodate outliers in discrete choice modelling', International Choice Modelling Conference, Yorkshire, UK, 30 March-1 April.
- Chintakayala, P.K., Hess, S., Rose, J.M. and Wardman, M. (2009) 'Effects of stated choice design dimensions on estimates', International Choice Modelling Conference, Yorkshire, UK, 30 March-1 April.
- Chung, D., Hensher, D.A. and Rose, J.M. (2009) 'Toward the betterment of risk allocation: Investigating risk perceptions of Australian stakeholder groups to public-private-partnership toll road projects', American Accounting Association Annual Meeting and Conference on Teaching and Learning in Accounting 2009 - "Accounting at a Tipping Point", New York, USA, 1-5 August.
- Collins, A., Rose, J.M. and Hess, S. (2009) 'Search based internet surveys: Airline stated choice', 88th Transportation Research Board Annual Meeting, Washington, D.C., USA, 11-15 January.
- Currie G (2009) 'Exploring the impacts of the 'Free before 7' campaign on reducing overcrowding on Melbourne trains' Australasian Transport Research Forum Auckland, NZ.
- Currie, G. (2009) 'Improving driver compliance with streetcar transit lanes using a public education campaign' Transportation Research Board Meeting, January.
- Currie, G. (2009) 'Setting long headways for coordination and service timing benefits – When less is more' Transportation Research Board Meeting, January.
- Currie, G. and Gook, M. (2009) 'Measuring the performance of transit passenger information web sites' Transportation Research Board Meeting, January.
- Currie, G. and Loader, C. (2009) 'High ridership growth from extended transit service hours – An exploration of causes' Transportation Research Board Meeting Washington D.C., USA, January 2009
- Currie, G. and Delbosc, A. (2009) 'Car ownership and low income on the urban fringe-benefit or hindrance' Australasian Transport Research Forum, Auckland, NZ
- Currie, G. and Loader, C. (2009) 'Exploring bus transfer behaviour in metropolitan Melbourne' Australasian Transport Research Forum, Auckland, NZ.
- Currie, G., Richardson A.J., Smyth, P., Dianne Vella-Brodrick. D., Hine, J, Lucas, K., Stanley, J., Jenny Morris, Kinnear, R., Stanley, J. (2009) 'Investigating links between transport disadvantage, social exclusion and well-being in Melbourne – An update on results' The 11th International Conference on Competition and Ownership in Land Passenger Transport (Thredbo 11) Delft University of Technology, The Netherlands, 21-24 September.
- Finn, B. and Mulley, C. (2009) 'Developments in market structure and regulation of urban bus services in developing countries and countries in transition', Proceedings of the 41st Annual Universities' Transport Study Group Conference, London, UK, 5-7 January.
- Ghazavi A., Sarvi M., Zavabeti A. (2009) 'Development of a new driver behaviour model: Part 1. Development of a platform to study car-following behaviour using real traffic data' Transportation Research Board, Washington D.C., USA.
- Gaio, G., Andersen, R., Rohne, A., Wargelin, L., Stopher, P., Tierney, K. and O'Connor, S. (2009) 'The Greater Cincinnati area large-scale (100%) GPS-based household travel survey', 12th Transportation Research Board National Transportation Planning Applications Conference 2009, Houston, USA, 17-21 May.
- Greaves, S.P. (2009) 'Development and application of a strategic modelling tool for the evaluation of air pollution mitigation

- strategies for urban freight in Sydney', Urban Transport, Bologna, Italy, 22-24 June.
- Greaves, S.P. (2009) 'Development and application of a strategic modelling tool for the evaluation of air pollution mitigation strategies for urban freight in Sydney', Proceedings of the Transport Planning, Land Use and Air Quality Conference, Denver, USA.
- Greaves, S.P. (2009) 'A strategic-level modelling tool for evaluating air quality and greenhouse gas mitigation strategies for urban road freight in Sydney', Transportation, Land Use, Planning, and Air Quality: Selected Papers of the Transportation, Land Use, Planning, and Air Quality Conference, Centennial, USA, 28-29 July.
- Greaves, S.P., Fifer, S., Ellison, R., Zhang, Y. and Germanos, G. (2009) 'Development of a GPS/GPRS prompted-recall solution for longitudinal driving behaviour studies', 32nd Australasian Transport Research Forum, Auckland, NZ, 29 September - 1 October.
- Hamer, P., Currie, G. and Young, W. (2009) 'Exploring travel and parking impacts of the Melbourne CBD parking levy' Australasian Transport Research Forum, Auckland, NZ
- Harvey, J., Heslop, S., Mulley, C. and Thorpe, N. (2009) 'Driver boredom', Proceedings of the 41st Annual Universities' Transport Study Group Conference, London, UK, 5-7 January
- Hensher, D.A. (2009) 'Attribute processing, heuristics, and preference construction in choice analysis', International Choice Modelling Conference 2009, Harrogate, UK, 30 March - 1 April.
- Hensher, D.A. (2009) 'Incompleteness in bus contracts: Identifying the nature of the Ex ante and Ex post perceptual divide', 11th International Conference on Competition and Ownership in Land Passenger Transport (Thredbo Series) 2009, Delft, The Netherlands, 20-25 September.
- Hess, S. and Hensher, D.A. (2009) 'Using conditioning on observed choices to retrieve individual-specific attribute processing strategies', The Transportation Research Board (TRB) 88th Annual Meeting, Washington, D.C., USA, 11-15 January.
- Hess, S. and Rose, J.M. (2009) 'Lessons in stated choice survey design', European Transport Conference, Leeuwenhorst, The Netherlands, 5-7 October.
- Hess, S. and Rose, J.M. (2009) 'Should reference alternatives in pivot design stated-choice surveys be treated differently?', 88th Transportation Research Board Annual Meeting, Washington, D.C., USA, 11-15 January.
- Hess, S., Rose, J.M. and Bain, S. (2009) 'Random scale heterogeneity in discrete choice models', European Transport Conference, Leeuwenhorst, The Netherlands, 5-7 October.
- Jones, S., Hensher, D.A., Rose, J.M. and Walker, R. (2009) 'Infrastructure asset reporting options: A stated preference experiment', American Accounting Association Annual Meeting and Conference on Teaching and Learning in Accounting, New York, USA, 1-5 August.
- Johnson, V., Currie, G. and Stanley, J. (2009) 'Can measures of disadvantage perpetuate the problems they seek to solve? – A discussion of the use of car ownership as a variable in multidimensional measures of disadvantage' Australian Social Policy Conference, Sydney.
- Kumar, P.C., Hess, S. and Rose, J.M. (2009) 'Using second preference choices in pivot surveys as a means of dealing with inertia', European Transport Conference, Leeuwenhorst, The Netherlands, 5-7 October.
- Li, Z., Hensher, D.A. and Rose, J.M. (2009) 'Valuation of travel time reliability in an extended expected utility theory framework', 12th International Conference on Travel Behaviour Research, Jaipur, India, 13-18 December.
- Li, Z., Rose, J.M. and Hensher, D.A. (2009) 'Petrol consumption and emissions from automobiles: Can policies make a difference?', 88th Transportation Research Board Annual

- Meeting, Washington, D.C., USA, 11-15 January.
- Mazloumi, E., Currie, G., Rose, G. and Sarvi, M. (2009) 'Using SCATS data to predict bus travel time', 32nd Australasian Transport Research Forum, Auckland, NZ.
- Mesbah M Sarvi M Ouveysi I and Currie G (2009) 'A methodology for optimization of transit priority in the transportation network', 18th ISTTT, Hong Kong Polytechnic University, Hong Kong, 16-18 July.
- Mesbah, M., Sarvi, M., (2009) 'A heuristic approach to optimise public transport priority in an urban network', Australasian Transport Research Forum, Auckland, NZ.
- Mesbah, M., Sarvi, M., Currie, G., Ouveysi, I., (2009) 'An optimal analytical approach to design a transit exclusive lane network', 8th International Congress on Civil Engineering, Shiraz, Iran.
- Moridpour S., Sarvi, M., Rose, G., Ramsay, E. (2009) 'Understanding heavy vehicle drivers' lane changing decisions' Transportation Research Board, Washington D.C., USA.
- Moridpour, S., Rose, G. and Sarvi, M. (2009) 'Modelling the heavy vehicle drivers' lane changing decision under congested traffic conditions'. 32nd Australasian Transport Research Forum, Auckland, NZ.
- Moridpour, S., Sarvi, M. and Rose, G. (2009) 'Acceleration behaviour of the heavy vehicle drivers during the lane changing manoeuvre'. 32nd Australasian Transport Research Forum, Auckland, NZ.
- Moridpour, S., Sarvi, M. and Rose, G. (2010) 'Modeling the lane changing execution of multi class vehicles under heavy traffic conditions'. 89th Transportation Research Board Annual Meeting. Washington D.C., USA.
- Moutou, C. (2009) 'Car parking matters to small retailers: An historical case study of three town centres in Marrickville', Proceedings of the First Academic Association of Historians in Australian and New Zealand Business Schools AAHANZBS Conference, Sydney, Australia, 14-15 December.
- Mulley, C. (2009) 'Passenger transport in the UK 1920-1950: The drive for 'co-ordination' of transport modes', Rijkswaterstaat Workshop, Utrecht, The Netherlands, 26-28 March.
- Mulley, C. (2009) 'Passenger transport in the UK 1920-50: The drive for 'co-ordination' of transport modes', Proceedings of the First Academic Association of Historians in Australian and New Zealand Business Schools Conference, University of Sydney, Australia, 14-15 December.
- Mulley, C. (2009) 'Promoting social inclusion in a deregulated environment: Extending accessibility using collective taxi-based services', The 11th International Conference on Competition and Ownership in Land Passenger Transport (Thredbo Series) 2009, Delft, The Netherlands, 20-25 September.
- Mulley, C. and Tanner, M. (2009) 'The Vehicle Kilometres Travelled (VKT) by private car: A spatial analysis using geographically weighted regression', 32nd Australasian Transport Research Forum, Auckland, NZ, 29 September - 1 October.
- Ng, A. (2009) 'A matching and pairing based heuristic for scheduling in-flight catering service', 23rd European Conference on Operational Research, Bonn, Germany, 5-8 July.
- Oron, D., Sze, S.N. and Ng, A. (2009) 'Improved two-stage heuristic for the in-flight catering delivery problem with time windows', Proceedings of the 10th Asia Pacific Industrial Engineering and Management Systems Conference, Kitakyushu, Japan, 14-16 December.
- Puckett, S.M. (2009) 'Improving our understanding of freight travel decision making: Motivations, constraints, incentives and interactions', 12th International Conference on Travel Behaviour Research, Jaipur, India, 13-18 December.
- Puckett, S.M. (2009) 'Economic behaviour of interdependent road freight stakeholders

- under variable road-user charges: Advanced discrete choice analysis', 12th International Conference on Travel Behaviour Research, Jaipur, India, 13-18 December.
- Puckett, S.M. and Rose, J.M. (2009) 'Observed efficiency of a D-Optimal design in an interactive agency choice experiment', International Choice Modelling Conference, Yorkshire, UK, 30 March - 1 April.
- Puckett, S.M., Rose, J.M. and Bain, S. (2009) 'Modelling heterogeneity in scale directly: Implications for estimates of influence in freight decision-making groups', 12th International Conference on Travel Behaviour Research, Jaipur, India, 13-18 December.
- Rhodes, J., Lok, P., Yang, S. and Bambacas, M. (2009) 'Resourced based view of intangibles on ERP systems implementation and organisational performance in China', 5th International Strategic Management Conference – Striking the Right Balance Between Existing Strategy and New Opportunities with Special Emphasis on Turbulent Markets, Stellenbosch University, South Africa, 2-4 July.
- Rose, G. (2009) 'Motorcycles: a growing dot on the transport policy radar'. 32nd Australasian Transport Research Forum.
- Rose, G. and Symmons, M. (2009) 'Training heavy vehicle drivers to reduce fuel consumption: Results from a pilot Ecodrive project'. US Transportation Research Board Conference, Washington, USA.
- Rose, J.M. and Hess, S. (2009) 'Dual-Response Choices in Reference-Alternative-Related Stated-Choice Experiments', 88th Transportation Research Board Annual Meeting, Washington, D.C., USA, 11-15 January.
- Rose, J.M., Hess, S., Bliemer, M. and Daly, A. (2009) 'The impact of varying the number of repeated choice observations on the mixed multinomial logit model', European Transport Conference, Leeuwenhorst, The Netherlands, 5-7 October.
- Rose, J.M., Scarpa, R. and Bliemer, M. (2009) 'Incorporating model uncertainty into the generation of efficient stated choice experiments: A model averaging approach', International Choice Modelling Conference, Yorkshire, UK, 30 March - 1 April.
- Sarvi M. (2009) 'Freeway operation characteristics of heavy commercial vehicles traffic' Transportation Research Board, Washington D.C., USA.
- Shiwakoti N., Sarvi, M., Rose, G. (2009) 'Enhancing the safety of pedestrians during emergency egress: Can we learn from biological entities?' Transportation Research Board, Washington D.C., USA.
- Shiwakoti N., Sarvi, M., Rose, G., Burd, M. (2009) 'A hybrid model for collective motion of pedestrians', 32nd Australasian Transport Research Forum, Auckland, NZ.
- Stanley, J., Stanley, J., Curie, G., Delbosc, A. and Vella-Brodrick, D. (2009) 'The place of transport in facilitating social inclusion via the mediating influence of social capital' The 11th International Conference on Competition and Ownership in Land Passenger Transport (Thredbo 11) Delft University of Technology, The Netherlands, 21-24 September.
- Stopher, P. and Greaves, S.P. (2009) 'Missing and inaccurate information from travel surveys – Pilot results', 32nd Australasian Transport Research Forum, Auckland, NZ, 29 September - 1 October.
- Stopher, P., Zhang, J., Zhang, Y. and Halling, B. (2009) 'Results of an evaluation of TravelSmart in South Australia', 32nd Australasian Transport Research Forum, Auckland, NZ, 29 September - 1 October.
- Stopher, P., Zhang, Y. and et al. (2009) 'Using GPS multi-day data to model activity choices', The Joy of the Journey: Celebrating the Life and Work of Ryuichi Kitamura Symposium, University of California at Davis, USA, 28-30 June.
- Toleman, R. and Rose, G. (2009) 'Towards a moving target: delivering outcomes for

sustainable transport'. 32nd Australasian Transport Research Forum.

Walters, D. (2009) 'Using value drivers to improve productivity in the logistics and supply chain management contribution to value chain networks', 7th Annual International Symposium on Supply Chain Management, Toronto, Canada, 28-30 October.

Walters, D., Hanrahan, J. and Qin, X.L. (2009) 'Demand led retailing: The retailer as the brand – Comparison of 'Hemispherical' approaches', Fifth Asia Pacific Conference in Retailing, Hong Kong, 25-27 August.

Wang, Y., Papageorgiou, M. (2009) 'A joint state and parameter estimation approach to freeway traffic state estimation, incident alarm, and detector fault diagnosis.' Transportation Research Board 88th Annual Meeting, Washington, D.C., USA.

Washington, S., Ravulaparthi, S., Rose, J.M., Hensher, D.A. and Pendyala, R. (2009) 'Bayesian imputation of non-chosen attribute values in revealed preference surveys', 88th Transportation Research Board Annual Meeting, Washington, D.C., USA, 11-15 January.

Win, A. and Poeschl, K.G. (2009) 'Value chain factors influencing choice of bottling location in the wine industry', Inaugural Wine Business Research Symposium, Newcastle, Australia, 7-8 December.

Zavabeti A., and Sarvi M. (2009) 'Reducing handover drops by utilizing comparative queuing' Wireless Telecommunication Symposium, IEEE.

Zhang, Y., Stopher, P. and Halling, B. (2009) 'An evaluation of TravelSmart tools for travel behaviour change', 32nd Australasian Transport Research Forum, Auckland, NZ, 29 September - 1 October.

WORKING PAPERS

Hypothetical bias, choice experiments and willingness to pay

David A Hensher

Ordered choices and heterogeneity in attribute processing

William H Greene and David A Hensher

Estimating the willingness-to-pay and value of risk reduction for car occupants in the road environment

David A Hensher, John M Rose, Juan de Dios Ortzar and Luis I. Rizzi

Costing value chain relationships: A challenge for strategic cost management and value chain management

David Walters

Commentary on the report to COAG by Infrastructure Australia

Alastair Stone

A strategic-level modelling tool for evaluating air quality and greenhouse gas mitigation strategies for urban road freight in Sydney

Stephen Greaves

Discrete location planning

Knut Haase

Incorporating model uncertainty into the generation of efficient stated choice experiments: A model averaging approach

John M. Rose, Riccardo Scarpa and Michiel C.J. Bliemer

Observed efficiency of a d-optimal design in an interactive agency choice experiment

Sean M. Puckett and John M. Rose

Using value chain networks to enhance cash flow management and create corporate value: Some observations

David Walters

The emergence of interactions as strategic entities in value chain networks

Jyotirmoyee Bhattacharjya and David Walters

Attribute processing, heuristics, and preference construction in choice analysis

David Hensher

Non-attendance and dual processing of common-metric attributes in choice analysis: A latent class specification

David A. Hensher and William H. Greene

Petrol consumption and emissions from automobiles: Can policies make a difference?

Zheng Li, John M. Rose and David A. Hensher

Constant elasticity of substitution (CES) production function can greatly overestimate the economic costs of climate policies

Truong P. Truong

Urban transport in Australia: Has it reached breaking point?

John Stanley and David A. Hensher

A framework for strategic decision-making and performance among Chinese managers

Peter Lok, Jo Rhodes and Vincent Cheng

The influence of organizational subcultures in health organizations

Peter Lok, Bob Westwood, Jo Rhodes and Paul Wang

Factors that comprise driver boredom and their relationships to preferred driving speed and demographic variables

S. Heslop, J. Harvey, N. Thorpe and C. Mulley

Is 'Compact City' a sensible planning approach? Empirical evidence of cross perceptions of travel attitudes in British settlements

Paulus T. Aditjandra, Corinne Mulley and John D. Nelson

Road transport and climate change: Stepping off the greenhouse gas

John K. Stanley, David A. Hensher and Chris Loader

PROFESSIONAL HONOURS and ENGAGEMENTS

FELLOWS

John Clements

Chartered Institute of Logistics and Transport,
UK

Professor David Hensher

Academy of Social Sciences in Australia
American Society of Planners; Australian
Institute of Transport Planning Management;
Chartered Institute of Logistics and Transport,
Australia; Engineers Australia (Companion)

Professor Corinne Mulley

Chartered Institute of Logistics and Transport,
UK

Professor Peter Stopher

American Society of Civil Engineers; Institute
of Transportation Engineers, Australia and
NZ

Professor Bill Young

Chartered Institute of Logistics and Transport,
UK; Institute of Transportation Engineers,
Australia and NZ; Institute of Transportation
Engineers, USA

PROFESSIONAL COMMITTEES

John Clements

General Committee and Passenger Transport
Logistics and Transport (Victorian section).

Professor Graham Currie

Public transportation planning and
development and Transit capacity and quality
of service, Transportation Research Board;
Victorian Road Based Public Transport
Advisory Committee.

Dr Rhonda Daniels

Premier's Council for Active Living
Workplace Travel Planning Group

Professor David Hensher

ITLS-Africa Board of Advice; NSW
Department of Transport Technical Advisory
Committee; Singapore's Land Transport
Authority International Advisory Panel
(chaired by the Minister for Transport,

Singapore); Standards Committee on Logistics,
Australia.

Professor Corinne Mulley

Blueprint reference group, NSW Transport
and Infrastructure; Connecting with Buses,
Western Sydney Community Forum; The
Premier's University Government Business
Forum.

Dr Ada Suk-Fung Ng

National Committee on Transport and Sydney
Transport Panel, Engineers Australia.

Dr Robert Ogulin

Academic Advisory Board, Logistics
Association of Australia.

Dr Sean Puckett

Centre for Research of Institutional Economics,
Roma Tre University, Italy.

Associate Professor Geoff Rose

University representative and Travel Demand
Management committee member,
Transportation Research Board, USA.

Dr Majid Sarvi

Vehicle User Characteristics and on Transport
Network Modelling Committees,
Transportation Research Board, USA.

Christopher Skinner

Chair, Standards sub-committee, Intelligent
Transport Systems Architecture, Australia;
Engineers Australia National Committees on
Software Engineering and on Transport;
Group 1 (ITS Architecture, Taxonomy and
Terminology) of International Standards
Organisation Technical Committee, Intelligent
Transport Systems, Australia; Standards
committee, Transport Information and
Control Systems, Australia.

Professor Peter Stopher

Australasian Transport Research Forum;
Scientific Advisory Panel Member, African
Centre of Excellence for Studies in Public and
Non-Motorised Transport, South Africa.

Dr Yibing Wang

Technical Committee on Transportation
Systems, International Federation of
Automatic Control; Advisory Committee of
the European Project Network of Excellence

for Advanced Road Cooperative Traffic management in the Information Society; Paper Review Subcommittee of the Freeway Operation Committee, Transportation Research Board, USA.

Alan Win

Institute of Management Consultants, NZ.

Professor Bill Young

Advisory Committee, NRTC Committee on Performance Based Standards; Treasurer, AITPM Victorian Committee.

CONFERENCE COMMITTEES

Associate Professor Geoff Rose

Australasian Transport Research Forum; Conference of Australasian Institutes of Transport Research; World Conference on Transport Research.

Professor David Hensher

International Executive Chair and Co-founder, International Conference Series on Competition and Ownership in Land Passenger Transport (The Thredbo Series).

Dr Ada Suk-Fung Ng

Institute for Operations Research and the Management Sciences, USA; National Committee for Transport, Australia.

Dr John Rose

Innovative Methods in Transport Analysis, Planning and Appraisal Programme Committee, European Transport Conference; Travel Survey Methods Committee, Transportation Research Board, USA.

Dr Yibing Wang

International Symposium on Freeway and Tollway Operations; IEEE Intelligent Vehicle Symposium.

EDITORIAL POSITIONS

John Clements

Advisory Board: International Journal of Logistics: Research and Applications

Professor Graham Currie

Guest Editor (with D. Hensher): Journal of Transport Geography Special Issue on the

10th International Conference on Competition and Ownership in Land Passenger Transport.

Editorial Advisory Board: Road and Transport Research.

Professor David Hensher

Volume and Series Editor, Pergamon/Elsevier Science Handbooks in Transport (UK).

Area Editor: Transport Reviews (UK).

Guest Editor (with G. Currie): Journal of Transport Geography Special Issue on the 10th International Conference on Competition and Ownership in Land Passenger Transport.

Editorial Advisory Board: International Journal of Transport Economics (Italy); Transportation (The Netherlands).

Editorial Board: Cooperative Transportation Dynamics (Germany); Journal of Choice Modelling (UK); Journal of Retailing and Consumer Services (UK); Journal of Transport Economics and Policy (UK); Transport Policy (UK); Journal of Transport Planning and Technology (UK); Transportation Research Part A: Policy and Practice (UK); Transportation Research Part E: Logistics and Transportation Review (UK).

Professor Corinne Mulley

Editorial Board: Journal of Transport History (UK).

Dr Sean Puckett

Editor: Book Series of Empirical Workshops of CREI (Centro di Ricerca sull'Economia della Istituzioni), Italy; Journal of Logistics and Sustainable Transport.

Dr Majid Sarvi

Editor Board: International Journal of Intelligent Transport Systems.

Professor Peter Stopher

Editorial Board: Transportation Letters: The International Journal of Transportation Research (USA); Journal of Transportation and Land Use (USA); Transport Reviews (UK); Transport Policy (UK).

Dr Yibing Wang

Associate Editor: IEEE Transactions on Intelligent Transportation Systems;

International Journal of Vehicle Information and Communication Systems.

Editorial Board: The Open Transportation Journal.

Editorial Advisory Board and Book Review Editor: Transportation Research Part C: Emerging Technologies.

Professor Bill Young

Editorial Advisory Board: Institution of Civil Engineers.

INDEPENDENT EXPERTISE

Professor Graham Currie

Submissions: State Parliament Select Committee Inquiry of Train Services; Federal Senate Inquiry into Public Transport, Standing Committee on Rural and regional Affairs and Transport.

Panel member: Eastern Metro Regional Electorate Council, Liberal Party Policy Discussion Group; Clayton Australian Labour Party Electorate Council Discussion Group.

Dr Rhonda Daniels

Submission: Accessibility indicators for transport planning, Sydney Morning Herald Independent Inquiry for a Public Transport Plan.

Professor David Hensher

Advisor: NSW and Federal Government on transport matters including patronage modelling for Sydney Metro project; On passenger transport reform, Land Transport New Zealand; Toll Road Infrastructure Projects, Macquarie Bank; Demand-modelling, NSW Sydney Transport Sector Study (NSW Government).

Peer review: Transport projects in Chile, UK, The Netherlands, and the USA.

Professor Corinne Mulley

Advisor: On network planning, evaluation and fares to Senate Rural and Regional Affairs and Transport Committee's Public Transport Inquiry; On demand estimation and effect on reliability, information on measures of satisfaction and construction of index to Independent Transport Safety and Reliability

Regulator; Advice: On relevant classes of State Transit Authority records (from 1930) to be retained in the State Archives to State Records NSW; On opportunities for spreading the peak demand for public transport in the education sector in Sydney to NSW Department of Premier and Cabinet; On issues relating to the fare structure to be proposed as part of the new electronic ticketing proposed for Sydney, NSW Ministry of Transport; On travel planning to NSW Transport Infrastructure Development Corporation.

Panel member: Taking NSW Public Transport into the Future! Top 5 recommendations, BusNSW Leading Edge Seminar

Dr John Rose

Advisor: Cegidem (formally Decision Research Asia); John Holland; Macquarie Bank; Thiess.

Professor Peter Stopher

Panel member: Central Coast Public Health Unit, Northern Sydney Central Coast Area Health Service, Presentation of a Public Transport Strategy for the Central Coast of NSW, Australia

Peer review: New Zealand Ministry of Transport, Research Project on Trip Chains and Trip Tours.

INVITED PRESENTATIONS

Dr Rhonda Daniels

Highlights from Australian Institute of Traffic Planning and Management seminar.
Australian Institute of Traffic Planning and Management

Professor Graham Currie

Society for Sustainability and Environmental Engineering – Does the Victorian Transport Plan contribute to a sustainable future?
Engineers Australia, Melbourne

Transit Planning in the 21st century.
Urban Transport World, Sydney

Australia – Igniting the rail revolution: The land use agglomeration benefits of new urban railways.

UrbanRAIL, Australasian Railway Association, Sydney

ARC Project on Transport and Social Exclusion – Update

National Conference of the Transport and Social Inclusion Committee; Transport Policy Group and Senior Transport Management Group, Department of Transport; Transport Economics Forum; VCOSS Annual General Meeting; Bus Industry Confederation National Conference.

ARC Project on Transport and Social Exclusion – Update – Implications for Public Transport in Sydney

Keynote, AITPM NSW Technical Seminar

Transport Connections – A Sustainable Future
Keynote, Transport Connections Coordinators' Forum

Sustainable Transport

Keynote, Australian Conservation Foundation

Visioning Melbourne's Transport Futures
Shaping Melbourne Taskforce, Vision for Melbourne

Rethinking public transport: What more is needed for continued patronage growth?
Victorian Transport Infrastructure Summit, Melbourne

Solving the Australian Urban Transport Problem
ALP National Conference Fringe Event on Transport, Sydney

Research perspectives on the merits of Light Rail versus Bus
BITRE Colloquium, Canberra

Smart Peak Urban Futures – Can we meet the challenge of urban sustainability? Can Australia's vulnerable urban areas be future-proofed? and Preferred Public Transport Futures
Municipal Association of Victoria – Local Government National Conference

Being left behind with bushfires and climate change
Transport and Social Inclusion Committee

Investigating Links Between Transport Disadvantage, Social Exclusion and Well Being in Melbourne – An Update of Results

Bus Association Seminar, Department of Treasury and Finance and Department of Premiers and Cabinet

Transport alternatives seminar

Keynote, Prahran Electoral Conference of the Liberal Party

Future City Transport 2nd Annual Conference

Melton Transport Connections Forum

Interface Councils CEO Forum, Municipal Association of Victoria

Transport Connections

Keynote, Wyndham Transport Forum

Professor David Hensher

Interactive agent choice experiments

Institute for Transport Studies, University of Leeds

Hypothetical Bias and choice experiments

Transport Studies Unit, University of Oxford

Road Pricing and funding

Eminent Speaker, Engineers Australia

Chair, Australian Economic Forum's Transport Session, Sydney

Non-market valuation: Embedding reliability in the valuation of travel time savings

Choice Modelling Workshop, Christchurch, NZ

Outlook – Overcoming transport infrastructure challenges for the future

NSW Transport Infrastructure Summit

Professor Corinne Mulley

Public Transport – Could mini buses be a successful bus alternative for low density areas?'
NSW Transport Infrastructure Summit

Contribution of travel planning and smart travel to the climate change agenda: concepts and European experience

Climate Change Council, NSW Department of Environment and Climate Change

Guest Speaker, BusNSW Annual General Meeting

How necessary is more infrastructure for quality public transport?

Keynote speech, Infrastructure Colloquium,
Department of Infrastructure, Transport,
Regional Development and Local
Government; Bureau of Infrastructure,
Transport and Regional Economics

Invited Speaker, Bus Industry Confederation
National Conference, Australia

*Training session on strategies for transport in
areas of low demand*

Regional local transport co-ordinators, NSW
Ministry of Transport

Presentation, Engineers Australia's Transport
Panel

Role of active living and transport

NSW Premier's Council for Active Living

Associate Professor Geoff Rose

*Reducing environmental impacts by using ITS to
support EcoDriving.*

Australian ITS Summit, Melbourne

*EcoDrive: helping us along the road towards
sustainability*

National EcoDriving Symposium, Melbourne

Professor Peter Stopher

*Assessing the transport needs of cancer patients on
the Central Coast of NSW*

Cancer Transport Action Group of the Central
Coast, NSW, Australia

*Simulating travel tour data from a household
travel survey*

Metropolitan Planning Organisation of
Indianapolis, Indiana, USA

Dr Yibing Wang

*A joint state and parameter estimation approach to
freeway incident detection*

VicRoads, Melbourne

*RENAISSANCE – A unified system tool for real-
time freeway network traffic surveillance*

Transport Certification Australia Limited,
Melbourne

IN THE MEDIA

PUBLIC TRANSPORT

Our Chairs in Public Transport for NSW and Victoria were in demand by the media on a range of topical issues.

Following Melbourne's rail failures in January's heat wave Professor Graham Currie (Chair, Victoria) gave a number of interviews to local and national broadcasters on (ABC, Channel 7, Stateline (TV), ABC 774 (Radio)) as well as writing a piece in The Age newspaper: 'Cool heads required before we blow our stacks and really go off the rails' (1 February). Professor Currie's research on early-bird free train travel in Melbourne which concluded that the scheme was a great success was quoted in a number of newspapers (The Age, 27 September; Brisbane Times, 9 October; The Journal, Fairfax, 5 October). Professor Currie also appeared on ABC's Lateline program (TV) talking about the bus and coach industry's major recruitment drive (2 March). He was also interviewed by ABC Radio National about public transport issues (Tony Delroy, Late Show Hour, 29 April) and by Sydney Morning Herald on the costs of traffic congestion (Andrew West, 22 August).

Professor Corinne Mulley (Chair, NSW) spoke to Channel Ten News (TV) about the tendering process for electronic ticketing for the Sydney region (T-card) (12 June) and to the Sydney Morning Herald newspaper about public transport fares structures (27 August). Following her presentation on collective taxi services in ITLS-Sydney's Leadership and Policy Seminar Series Professor Mulley took part in live radio discussions on the ABC Sydney (Deborah Cameron) and ABC Illawarra (Steve Parsons) morning shows on the role of demand responsive transport and an article on collective taxi services was published in the Sydney Morning Herald newspaper (Andrew West, 5 August).

CARBON NEUTRAL TRANSPORT SYSTEMS

Zheng Li, a PhD candidate at ITLS-Sydney, participated in an online forum on 'Are we doing enough to ensure a rapid and smooth transition to carbon neutral transport systems this century?' (Comment:Visions, 12 October).

CONGESTION CHARGING

A number of ITLS-Sydney academics spoke to the media about congestion charging. 2UE (Radio) spoke to Professor John Stanley about congestion charging (26 November), Professor Peter Stopher appeared on Channel Seven's Today Tonight programme (TV) talking about the cost of toll roads and Dr John Rose commented on the removal of the M4 toll in the Australian Financial Review newspaper, 28 October. Commentary from Professor David Hensher appeared in the Sydney Morning Herald newspaper (articles by Andrew West (31 May), Anthony Laws (12 August) and Brian Robins (26 November)) and he was interviewed on road pricing in the NSW Transport Blueprint by the ABC Radio National (Kylie Simmonds, 11 December).

THE COST OF LIFE

Professor Hensher gave a number of interviews on his research (with J. Rose) which shows that the value of life, in terms of a fatality on the roads, is AUD \$6m and not AUD \$1.5m as was previously thought (14 July 2009) (ABC (National, Sydney, Melbourne, Hobart, Brisbane) and 2GB (Radio), The Age, Sydney Morning Herald, Daily Telegraph, Bendigo Advertiser, Newcastle Herald (Newspaper) and Australian Associated Press.

SAFETY ISSUES

Professor Hensher talked on the radio about safety issues (Andy Muirhead, ABC Hobart (21 July) and Michael Mackenzie, ABC Radio National's Bush Telegraph (30 July)).

OUR PEOPLE

BOARDS OF ADVICE

The purpose of the Board of Advice at ITLS-Sydney and the Advisory Committee at ITS-Monash is to support the continued development and utilisation of the Key Centre as a centre of excellence adding value to the community. The academic and commercial membership of the committees gives a broad network for the sharing of expertise and experience. Particular contributions from members include: high-level advice on issues identified by the Committees and Key Centre staff for inclusion in the teaching and research programs and assistance with integration of the faculty and student activities, within the community of stakeholders.

ITLS-SYDNEY BOARD OF ADVICE



Board of Advice Meeting, May 2009.

L to R: Mark Rainbird, Jyotirmoyee Bhattacharjya, Wendy Adams, Professor Geoff Rose, Paul Forward, Dr Alastair Stone, Stephen Rowe, Professor David Hensher, John King, Andrew Collins, Leonard Harper, Llew Russell and Gillian Akers.

(The Board also met in November 2009)

Chair, ITLS-Sydney Board of Advice

Dr Alastair Stone

Managing Director, Pacific Infrastructure Corporation

Professor David Hensher

Director, ITLS-Sydney

Wendy Adam

National Traffic and Transport Planning Executive, Parsons Brinckerhoff

Gillian Akers

Senior Associate, Strategic Design and Development Pty Ltd

Dr Peter Barnard

General Manager, International Markets and Economic Services for Meat and Livestock Australia (MLA)

Warren Bennett

Executive Director, Board of Airline Representatives of Australia

Professor Chandra Bhat

Department of Civil Engineering, University of Texas at Austin, USA

Jyotirmoyee Bhattacharjya

Doctoral Program, ITLS-Sydney

Professor Axel Börsch-Supan

Director, Mannheim Research Institute for the Economics of Aging, University of Mannheim, Germany

Professor Ken Button

Director, Transportation Policy, Operations and Logistics Centre, George Mason University, USA

Andrew Collins

Doctoral Program, ITLS-Sydney

Professor Paul Cousins

Professor of Operations Management and CIPS Professor of Supply Chain Management, Manchester Business School, The University of Manchester, UK

Doug Dean

Managing Director, Veolia Environmental Services

Paul Forward

Principal, Evans and Peck

Jim Glasson

Chief Executive Officer, ComfortDelGro Cabcharge

Professor Phil Goodwin

Professor of Transport Policy, Centre for Transport and Society, Faculty of the Built Environment, University of the West of England, UK

Nicholas Hann

Managing Director, Infrastructure, Macquarie Bank, Australia / Canada

Len Harper

Executive Director, The Chartered Institute of Logistics and Transport in Australia

Brad Harrison

President, Logistics Association of Australia Ltd

Professor Trevor Heaver, Emeritus

Centre for Transportation Studies, Operations and Logistics Division, Sauder School of Business, University of British Columbia, Canada

Stuart Hicks

Chair, National Transport Commission, Chair, Planning and Transport Research Centre and Chair, John Curtin Institute of Public Policy

Michael Kilgariff

Chief Executive Officer, Australian Logistics Council

John King

Managing Director, Aviation and Tourism Management Pty Ltd

Scott Lennon

Partner - Economics, PricewaterhouseCoopers

Stephen Lucas

Managing Director, Warrnambool Bus

Professor Alan McKinnon

Director of the Logistics Research Centre, Heriot-Watt University, Edinburgh, UK

Darryl Mellish

Executive Director, Bus and Coach Association NSW

Hal Morris

Chief Executive, Australian Logistics Council

Professor Juan de Dios Ortúzar

Department of Transport Engineering and Logistics, Pontificia Universidad Católica de Chile, Chile

Professor Tae Oum

UPS Foundation Chair in Transport and Logistics, Sauder School of Business, University of British Columbia, Canada

Professor Greg Patmore

Associate Professor (Discipline of Work and Organisational Studies), and Pro Dean,

Faculty of Economics and Business, The University of Sydney

Phil Potterton

Canberra Manager, GHD Meyrick

Professor John Pucher

Bloustein School of Planning and Public Policy, Rutgers University, USA

Mark Rainbird

Managing Director, AWA

Professor Geoff Rose

Director, Institute of Transport Studies, Monash University

Stephen Rowe

Director, Busways Group

Llew Russell

Chief Executive, Shipping Australia Ltd

Tony Sheldon

State Secretary, NSW Branch of the Transport Workers Union

Professor John Stanley

Adjunct Professor and Bus Industry Confederation Senior Research Fellow in Sustainable Land Transport, ITLS-Sydney

Professor Wayne Talley

Executive Director, International Maritime, Ports and Logistics Management Institute, Old Dominion University, Norfolk, Virginia, USA

Professor Kenneth Train

Department of Economics, University of California, Berkeley, Vice President, National Economic Research Associates, USA

Professor Peter Wolnizer

Dean, Faculty of Economics and Business, The University of Sydney

ITS-MONASH ADVISORY COMMITTEE

The Advisory Committee met in June and December 2009.

Chair, ITS-Monash Advisory Committee

Professor John Stanley

Adjunct Professor and Bus Industry Confederation Senior Research Fellow in Sustainable Land Transport, ITLS-Sydney

Professor Geoff Rose

Director, ITS-Monash

Neil Aplin

GHD Meyrick and Chair, The National Marine Safety Committee

Peter Bentley

Chief Operating Officer, ConnectEast Group

Bernie Carolan

Chief Executive Officer, Metlink

Charmaine Dunstan

Director, Traffix Group Pty Ltd

Rob Fremantle

Executive Director, Network and Asset Planning, VicRoads

Professor David Hensher

Director, ITLS-Sydney

Michael Hopkins

Executive Director (Policy and Communication), Department of Transport

Peter Hunkin

Transport Advisory Leader, Sinclair Knight Merz

Dr Michael Kennedy

Chief Executive Officer, Mornington Peninsula Shire

Brian Negus

General Manager Public Policy, RACV

Dr Ken Ogden

Ken Ogden and Associates

Kate Partenio

Director, GTA Consultants

Dr Tim Patton

Manager, Planning and Policy Division, Department of Infrastructure

Ian Pitcher

Director, Victoria Division, Maunsell Consulting

David Teller

Business Development Manager, Veolia Transport Australia

Gerald Waldron

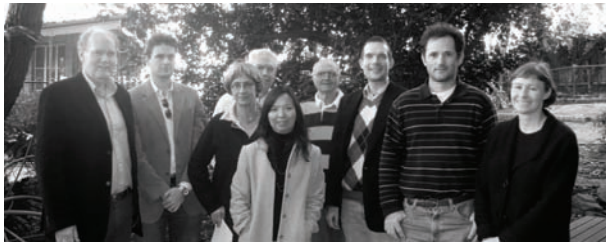
Managing Director, ARRB Group

Prof Xiao-Ling Zhao

Head, Department of Civil Engineering, Monash University

OUR STAFF

ACADEMIC STAFF



ITLS-Sydney Academic Staff

L to R: Professor David Hensher, Dr John Rose, Professor Corinne Mulley, Professor Peter Stopher, Dr Ada Suk-Fung Ng, Professor David Walters, Dr Sean Puckett, Associate Professor Stephen Greaves, and Dr Rhonda Daniels.

Key Centre Director and Director, ITLS-Sydney

Professor David Hensher

BCom(Hons) PhD UNSW, FASSA FCIT
FAITPM CompIEAust MAPA

Director, ITS-Monash

Associate Professor Geoff Rose

BEng QIT MSc PhD *Northwestern*, MIEAust
CPEng MITE

Chair of Civil Engineering, Monash
University

Professor Bill Young

BE(Hons) UNSW GradDipMgt MBA *Deakin*
MSc PhD *Monash*, FIEAust FCIT FITE MACRS

Chair in Public Transport, ITS-Monash

Professor Graham Currie

BSc(Hons) *Huddersfield* MSc *Cranfield*

Chair in Public Transport, ITLS-Sydney

Professor Corinne Mulley

BA(Hons) *Nott* MSc PhD *LSE*, FCILT

Professor of Transport Planning, ITLS-Sydney

Professor Peter Stopher

BSc(Eng) PhD *Lond*, FIEAust MASCE MASA
MITE

Professor of Logistics and Supply Chain
Management, ITLS-Sydney

Professor David Walters

BA *Alberta* MSc *Bradford* PhD *Cranfield*

Associate Professor in Transport Management,
ITLS-Sydney

Associate Professor Stephen Greaves

BA(Hons) *Leeds* MSc *Wales* PhD *Louisiana State*

Honorary Professor in Aviation Management

Professor Werner Delfmann

Honorary Associate Professor

Associate Professor Peter Lok

BAppSc MHP UNSW MBA PhD UTS

Honorary Professor in Sustainable Transport
Systems

Professor Truong Truong

BE(Hons) UWA LLB MA MEngSc *Sydney* PhD
Macq

Adjunct Professor, ITS-Monash

Professor Rahmi Akcelik

Adjunct Professor and Bus Industry
Confederation Senior Fellow in Sustainable
Land Transport, ITLS-Sydney

Professor John Stanley

BCom(Hons) *Melb* MPhil *Ston*

Adjunct Professor, ITS-Monash

Professor Tony Richardson,

Senior Lecturer in Transport and Logistics
Management

Dr John Rose

BEC(Hons) PhD *Sydney*

Senior Lecturer in Civil Engineering, Monash
University

Dr Yibing Wang

BSc *Sichuan* MEng *Chongqing* PhD *Tsinghua*

Lecturer in Logistics and Supply Chain
Management

Dr Ada Suk-Fung Ng

BSc *Curtin* WA PhD *CUHK*

Lecturer in Transport and Logistics
Management

Dr Sean Puckett

BA(Hons) *WWU* MA *Washington* PhD *Sydney*

Lecturer in Civil Engineering, Monash
University

Dr Majid Sarvi

BEng(Hons) MEng PhD *Tokyo*

Postdoctoral Research Fellow, ITLS-Sydney

Dr Stuart Bain

BInfTech BEng(Hons) PhD *Griffith* MIEEE

Program Director, Transport Management
Course in Bus and Coach Operations, ITS-
Monash

John Clements

BCom(Hons) DipEd *Melb* MEd MAdmin,
FCILT

Deputy Program Director, Transport
Management Course in Bus and Coach
Operations, ITS-Monash

Astrid De Alwis

Research Fellow, ITS-Monash

Alexa Delbosc

*Sessional Lecturers in Transport and
Logistics and Supply Chain Management,
ITLS-Sydney*

Dr Sascha Albers

Dipl.-Kfm., CEMS-Master, Dr. rer. pol.

Matthew Beck

BEd(Hons) MPhil *Sydney*

Michael Hasking

Dr Peter Hidas

MSc PhD BME

Frederic Horst

BBus *Dusseldorf* MTM *Sydney*

Gareth Jude

BA(Hons) *York* MBus *UTS* DipEd *Sydney*

Dr Andrew Kerr

MBA *Macq* DBA *IntMC*

Dr Robert Ogulin

MBA PhD *MGSM*

Chris Skinner

BSc *Lond* MEngSc *UNSW* MBA *Deakin*

Alan Win

CMC, CPIM

RESEARCH STAFF

Senior Research Analyst, ITLS-Sydney

Dr Rhonda Daniels

BSc *UNSW* PhD *Sydney* MPS *UNSW*

Research Associate, ITS-Monash

Rita Seethaler

Senior Research Analyst, ITLS-Sydney

Christine Prasad

BSc(Hons) *Monash* CertHE *Unitec NZ*

Senior Research Analyst, ITLS-Sydney

Dr Yun Zhang

BSc *BNU* MSc *LU* PhD *UTS*

Research Analyst, ITLS-Sydney

Russell Familiar

Research Analyst, ITLS-Sydney

Jenny King

Research Analyst, ITLS-Sydney

Yang Lan

BSc *NEU* MCSEM MITM *UTS*

Research Analyst, ITLS-Sydney

Dr Wu Quan

BSc MEng *BIT* PhD *UTS*

Research Analyst, ITLS-Sydney

Jun Zhang

BEng(Hons) *Wuhan*

ADMINISTRATION ASSOCIATES

Office Manager, ITLS-Sydney

Jo Dumergue

Finance Coordinator, ITLS-Sydney

Anne Fernando

CPA ACMA

Website Manager, SORT Clearinghouse, ITS-
Monash

Pauline Forbes

Administration Manager, ITS-Monash

Brenda O'Keefe

Projects Manager, ITLS-Sydney

Ruth Steel

BA(Hons) *Lanc* MSc MPhil *Brist*

Administration Coordinator, ITLS-Sydney

Annette Thomas

Administration Assistant, ITLS-Sydney

Bart Ahluwalia

BA(Hons) *Lond*

Administration Assistant, ITLS-Sydney

Kaylene Bodell



THE UNIVERSITY OF
SYDNEY

Institute of Transport and Logistics Studies
Faculty of Economics and Business
The University of Sydney
NSW 2006 Australia

Tel +61 2 9351 0071
Fax + 61 2 9351 0088
business.itlsinfo@sydney.edu.au
sydney.edu.au/business/itls



MONASH University
Engineering

Institute of Transport Studies
Faculty of Engineering
Monash University
Victoria 3800 Australia

Tel +61 3 9905 9627
Fax +61 3 9905 9493
itsinfo@eng.monash.edu.au
www.civil.eng.monash.edu.au/its

