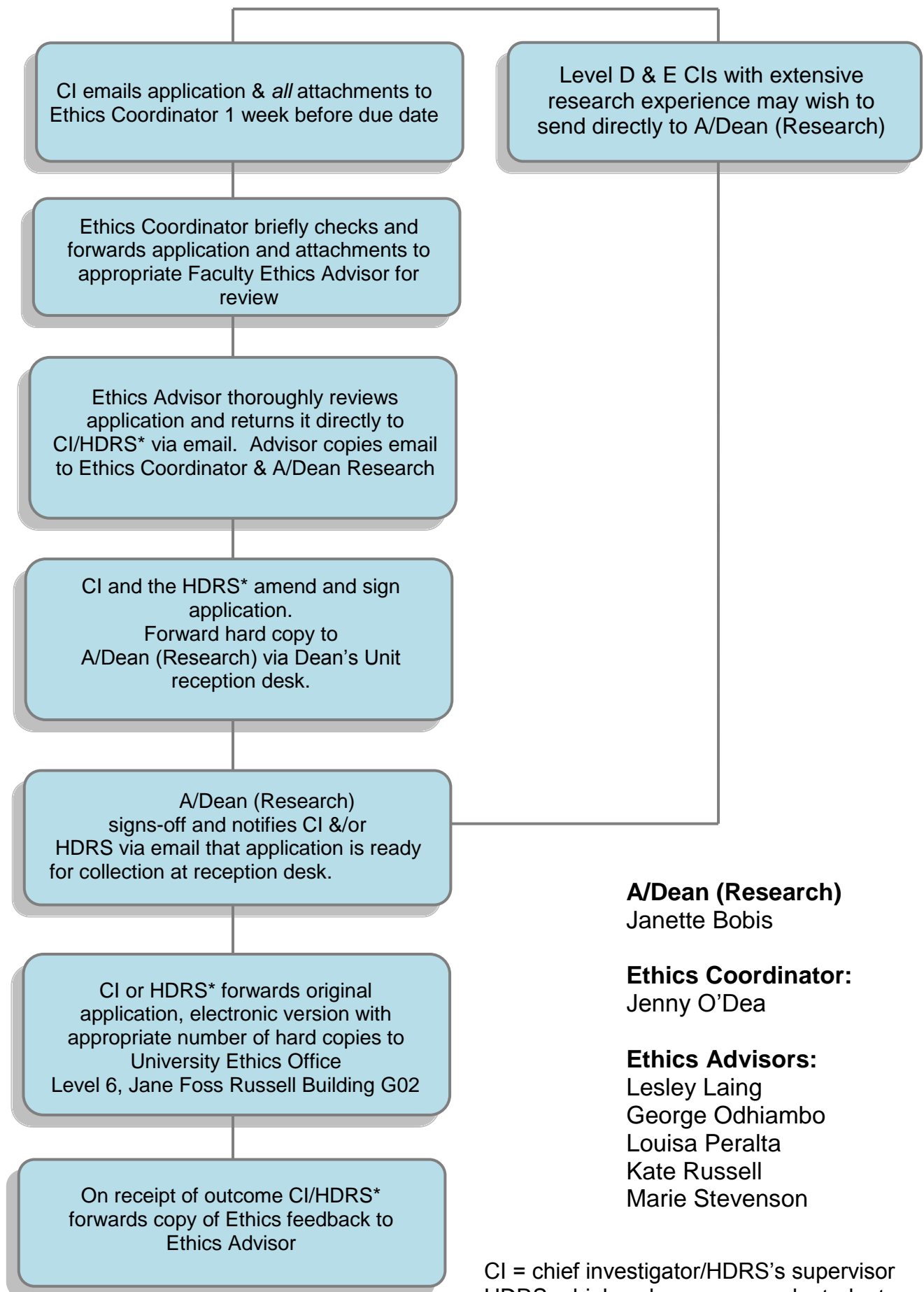


Faculty of EdSW Ethics Application Processing



A/Dean (Research)

Janette Bobis

Ethics Coordinator:

Jenny O'Dea

Ethics Advisors:

Lesley Laing
George Odhiambo
Louisa Peralta
Kate Russell
Marie Stevenson

CI = chief investigator/HDRS's supervisor
HDRS = higher degree research student