



**NSW Bureau of Crime
Statistics and Research**

Latest trends in crime in New South Wales

Jackie Fitzgerald

NSW Bureau of Crime Statistics and Research



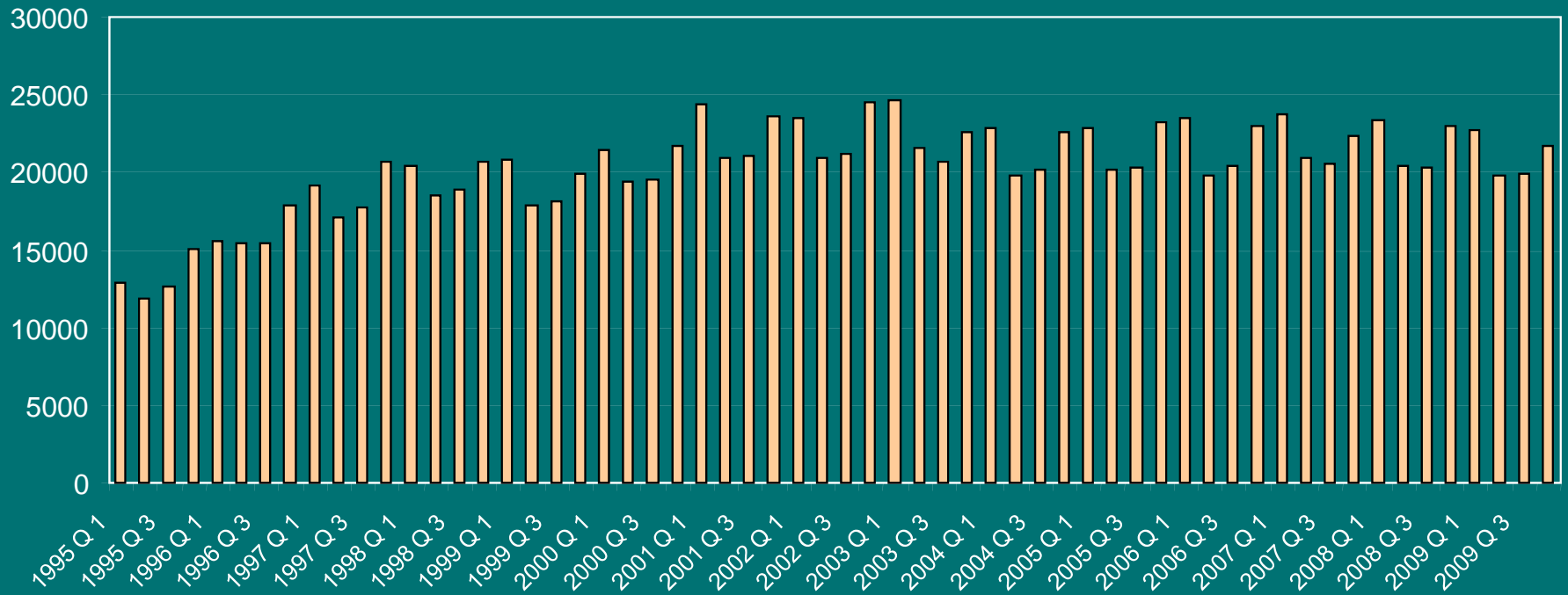
Overview

- The big picture - Long term trends in theft and violence
- Recent trends in specific offences
- Regional trends and patterns
- Notable local results
- Other information available

Long term trends in violence

15 years of violent crime in NSW: murder, assault, sex offences, robbery

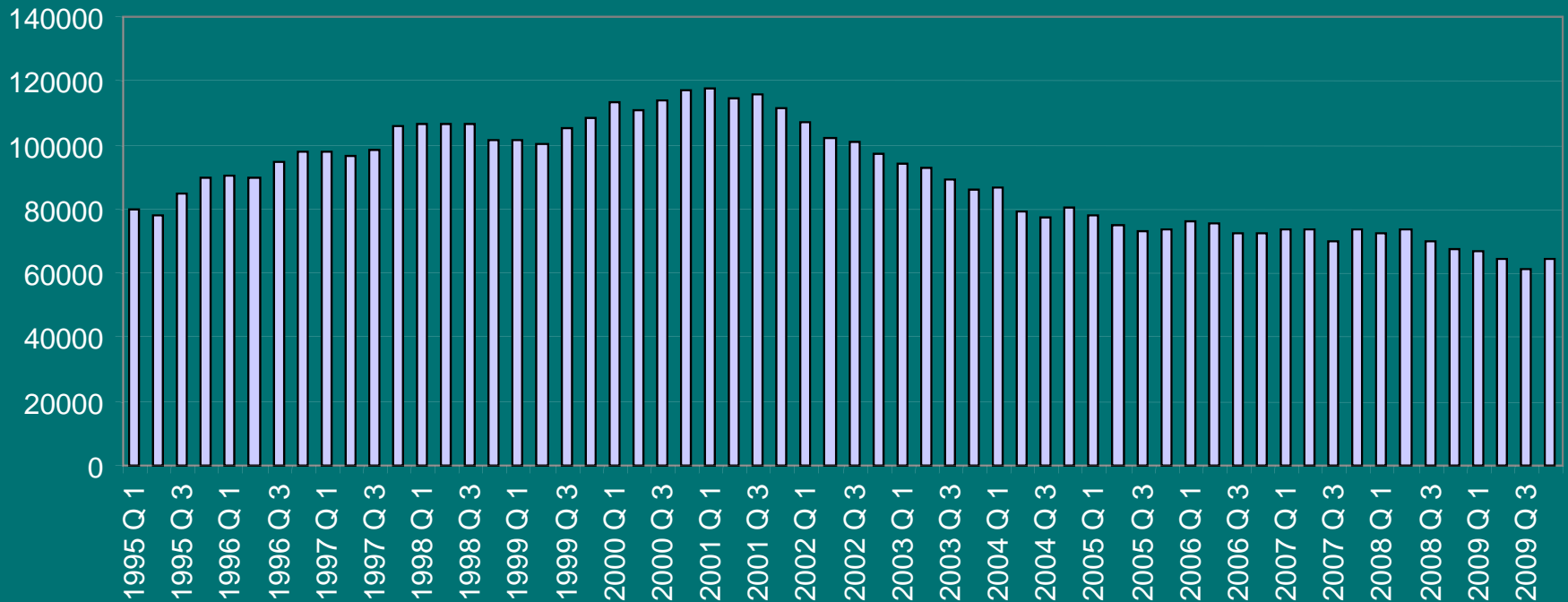
Number of incidents



Long term trends in theft

15 years of theft in NSW: break and enter, car theft, all stealing, fraud

Number of incidents



NSW trends in the past 2 years

Annual % change
Jan 08 to Dec 09

17 Major offences

Murder*	Stable
Assault - domestic violence related	Stable
Assault - non-domestic violence related	Stable
Sexual assault	Stable
Indecent assault, act of indecency and other sexual offences	Stable
Robbery without a weapon	Down by 15.7%
Robbery with a firearm	Stable
Robbery with a weapon not a firearm	Down by 10.9%
Break and enter dwelling	Down by 6.4%
Break and enter non-dwelling	Down by 16.3%
Motor vehicle theft	Down by 8.5%
Steal from motor vehicle	Down by 18.8%
Steal from retail store	Stable
Steal from dwelling	Stable
Steal from person	Down by 4.8%
Fraud	Down by 10.7%
Malicious damage to property	Stable

'Minor' offences trending upward

**Annual % change
Jan 08 to Dec 09**

Significant trends in selected minor offences

Harassment, intimidation, private nuisance

Up 6.8%

Possession/ use cocaine

Up 54.3%

Possession/ use narcotics

Up 28.6%

Possession/ use cannabis

Up 12.5%

Possession/ use other drugs

Up 22.1%

Pornography

Up 32.8%

Breach bail

Up 4.9%

Trends and rates of violence

	2 yr violence trend	Ratio to NSW rate
NSW	Stable	1.0
Greater Sydney	Stable	0.9
Inner Sydney	Down 10.9%	2.0
Eastern Suburbs	Down 15.4%	0.7
St George-Sutherland	Stable	0.6
Canterbury-Bankstown	Stable	0.8
Fairfield-Liverpool	Stable	0.9
Outer South Western Sydney	Stable	1.3
Inner Western Sydney	Stable	0.7
Central Western Sydney	Stable	1.1
Outer Western Sydney	Stable	1.1
Blacktown	Stable	1.4
Lower Northern Sydney	Stable	0.4
Central Northern Sydney	Stable	0.4
Northern Beaches	Stable	0.5
Central Coast	Stable	1.0
Hunter	Stable	1.0
Illawarra	Stable	1.0
Richmond-Tweed	Stable	1.1
Mid North Coast	Stable	1.1
Northern	Down 7.8%	1.4
North Western	Stable	1.9
Central West	Stable	1.3
South Eastern	Stable	0.9
Murrumbidgee	Stable	1.2
Murray	Stable	1.0
Far West	Stable	2.2

Trends and rates of theft

	2 yr violence trend	Ratio to NSW rate
NSW	Down 9.5%	1.0
Greater Sydney	Down 11.5%	1.0
Inner Sydney	Down 12.4%	2.5
Eastern Suburbs	Down 15.2%	1.1
St George-Sutherland	Down 10.7%	0.6
Canterbury-Bankstown	Down 11.7%	0.9
Fairfield-Liverpool	Down 11.3%	0.9
Outer South Western Sydney	Stable	0.9
Inner Western Sydney	Down 14.9%	1.0
Central Western Sydney	Down 12.1%	1.1
Outer Western Sydney	Stable	0.9
Blacktown	Stable	1.2
Lower Northern Sydney	Down 20.5%	0.7
Central Northern Sydney	Down 12.9%	0.5
Northern Beaches	Stable	0.7
Central Coast	Down 13.7%	0.9
Hunter	Down 8.6%	1.1
Illawarra	Down 11.6%	0.9
Richmond-Tweed	Stable	1.0
Mid North Coast	Stable	1.0
Northern	Stable	1.0
North Western	Stable	1.4
Central West	Down 16.5%	1.0
South Eastern	Stable	0.8
Murrumbidgee	Stable	1.0
Murray	Down 6.3%	1.1
Far West	Stable	1.2

Notable local increases

- Greater Sydney – sexual assault up 12%
- Outer Western Sydney – sexual assault up 32%
- Fairfield-Liverpool – robbery with a firearm up 97%
- Northern Beaches – steal from person up 30%
- Central Western Sydney – steal from dwelling up 25%
- Outer South Western Sydney – steal from dwelling up 23%
- Mid North Coast – car theft up 33%
- North Western – break ins up 23%
- Far West – non-DV assault up 13%

LGA information available

Web www.bocsar.nsw.gov.au

Phone 9231 9190

Email bcsr@agd.nsw.gov.au

- Trends
- Rates
- Local Government Area Reports containing maps, victims, offenders, alcohol related incidents
- Information service for specialised queries

Local Government Area Crime Report 2008

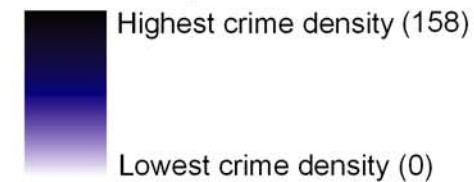
Campbelltown

Assault
non-domestic violence related

Hotspot Map (2008)

Legend

Crime Density



Background

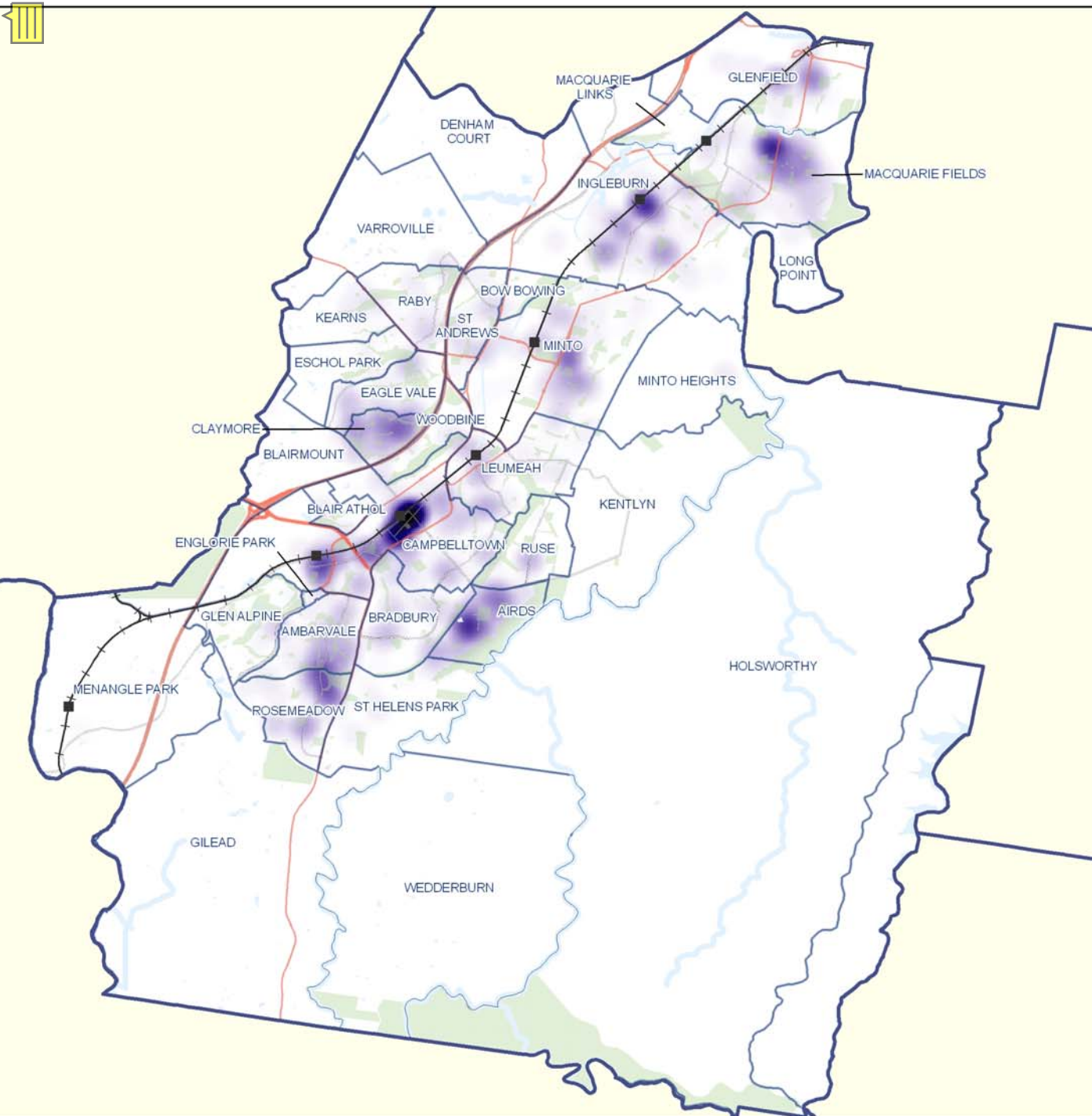
- LGA Boundaries
- Suburb Boundaries
- Railway Stations
- +— Railway Line
- Major Highways
- Major Roads
- Water
- Parks, Forests & Reserves

NSW Bureau of Crime
Statistics and Research

N



0 1.25 2.5 5 Km



Why has property crime fallen?

Possibly

- Reduced heroin use
- Economic prosperity including low youth unemployment
- Targeted policing including focus on repeat offenders
- Reduced market for stolen goods

But ... the downward trend in property crime is not restricted to just NSW or even Australia

Is assault turning the corner?

- 81% of 'violence' is assault
- 45% of assault is alcohol related
- 34% of assaults are domestic related
- 48% occur in residences, 10% in licensed premises

Number of assaults on licensed premises, NSW

