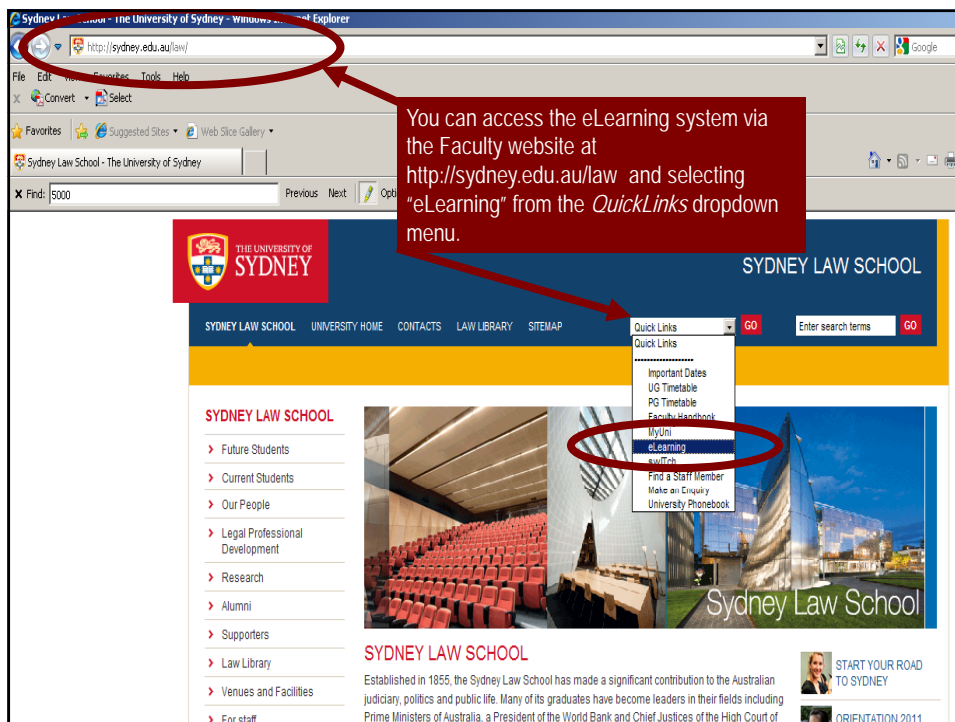


# Sydney eLearning System (Blackboard Learn)

You can access the eLearning system directly via this link  
<http://elearning.sydney.edu.au>

OR

via the Faculty website (see next slide)



The screenshot shows a web browser window displaying the Sydney Law School website. The address bar shows <http://sydney.edu.au/law/>. A red circle highlights the address bar, and a red arrow points from a text box to it. The text box contains the following text: "You can access the eLearning system via the Faculty website at <http://sydney.edu.au/law> and selecting 'eLearning' from the QuickLinks dropdown menu." The website header includes the University of Sydney logo and the text "SYDNEY LAW SCHOOL". A navigation menu contains links for "SYDNEY LAW SCHOOL", "UNIVERSITY HOME", "CONTACTS", "LAW LIBRARY", and "SITEMAP". A search bar is present with the text "Enter search terms" and a "GO" button. A "Quick Links" dropdown menu is open, showing a list of links: "Quick Links", "Important Dates", "UG Timetable", "PG Timetable", "Enrol in Blackboard", "Library", "eLearning" (highlighted with a red circle), "eLearning and Tech", "Find a Staff Member", "Make an Enquiry", and "University Phonebook". The main content area features a sidebar with a list of links: "Future Students", "Current Students", "Our People", "Legal Professional Development", "Research", "Alumni", "Supporters", "Law Library", "Venues and Facilities", and "For staff". A large image of a lecture hall is displayed, with the text "Sydney Law School" overlaid. Below the image, the text "SYDNEY LAW SCHOOL" is repeated, followed by a paragraph: "Established in 1855, the Sydney Law School has made a significant contribution to the Australian judiciary, politics and public life. Many of its graduates have become leaders in their fields including Prime Ministers of Australia, a President of the World Bank and Chief Justices of the High Court of Australia." A small image of a woman is shown next to the text "START YOUR ROAD TO SYDNEY". At the bottom right, there is a small image of a person and the text "ORIENTATION 2011".

Blackboard Guest Home Help Login

THE UNIVERSITY OF SYDNEY

Welcome to Sydney eLearning

Enter your Unikey details here.

Sydney eLearning Student Support

Sydney eLearning Student Support  
Getting Started  
Student Guides  
Student Help Pages  
Email Us

Log in Here

Change Text Size High Contrast Setting

Please enter your credentials and click the Login button below.

Username:

Password:

Login

Useful Student Links

MUni Login  
Student Services  
Student Guide  
Student Administration  
Handbooks  
Library  
Maps

Log in Help

- Ensure that 'Caps Lock' is not turned on.
- Login using your Unikey and your Unikey password.
- STUDENTS- You must have activated your password once per semester to login to Learn. If you are unable login you may need to [resynchronize your Unikey password](#)

THE UNIVERSITY OF SYDNEY

My Units of Study Staff Students

My Units of Study Notifications Dashboard

Tools

- Announcements
- Calendar
- Tasks
- My Grades
- Send Email
- User Directory
- Personal Information
- Address Book

Blackboard Learn Units of Study

Units of Study in which you are a TA:

- 2011 S1 Late IntA - LAWS6252 Legal Reasoning and the Common Law System (Group A)  
Instructor: Mai Stringer

WebCT CE Units of Study

You are not enrolled in any courses

My Calendar

My Communities

Here is the list of eLearning sites for subjects that you are enrolled in for the semester.

Note: If you have enrolled late, please allow a few days before your site appears on this list as it needs to synchronise with the student administration database.

This is the entry page for your eLearning site. The "What's New" entry page provides a brief summary of any new content that has been added to the site (e.g. any new files or announcements).

To proceed, click on the "Course Content" link (you may need to click on the "<" icon, located at the edge of the screen on the left, to expand if you do not see the left hand side menu).

This is an example of what may be posted to the eLearning site for your subject.

Welcome to LAWS6252  
Legal Reasoning & the Common Law System  
(Intensive Group C)  
Semester 2, 2011

[Unit Outline & Reading Guide](#)

[Lecture Slides](#)

[Quiz Results 2011](#)

[Take-Home Assignment 2011](#)

[Connect to Law Library eReserve for LAWS6252](#)  
Connect to the Law Library eReserve collection for this course. Or for more information on how to access the library's eReserve, go to: <http://www.library.usyd.edu.au/databases/treserve.html>

[Assignment Dropbox](#)  
Link to the Assignment Dropbox for you to submit your assignment files. Also includes a "how-to" guide and a link to the assignment coversheet (for your hard copy submission).

## Using the Assignment Dropbox

Note: Assignment files should be submitted in either MS Word (.doc or .docx) or Rich Text Format (.rtf) form.

Please try to keep your filename short (but should include your SID). Please do not include any spaces or special characters in your filename, *e.g. SID300010000Essay*.

THE UNIVERSITY OF SYDNEY

My Units of Study Staff Students

Course Content

Welcome to LAWS6252  
Legal Reasoning and the Common Law System

Click on either of these links to access the Assignment Dropbox.

[Unit Outline & Reading Guide](#)

[Assignment Dropbox](#)  
This is where to submit your assignment files. Also includes a how-to guide and links to the assignment coversheets online.

[Student Resources](#)

[Sydney Law School Resources](#)

Copyright 2011, University of Sydney.  
Please read the [University copyright policy](#) for the disclaimer, copyright and use of this website.  
If you are having problems with this eLearning site contact the [Sydney eLearning Helpdesk](#)  
For general IT difficulties contact the [IT Helpdesk](#)

THE UNIVERSITY OF SYDNEY

My Units of Study Staff Students

2011 S1 Late IntA - LAWS6252 Legal Reasoning and the Common Law System (Group A) Course Content

Assignment Dropbox

Click on the relevant Assignment Dropbox link for your assignment. *Note: There may be a separate Dropbox for each assessment item, for example, one for a Take-Home Exam, and a separate one for a Problem Assignment.*

[Take-Home Assignment \(75%\)](#)  
This is the Assignment Dropbox for your Take-Home Assignment. Please submit your files here.

[Blackboard On Demand Learning Centre](#)  
Includes video tutorials on how to submit an assignment, take a test online and how to participate in an online discussion.

[A Guide to Avoiding Plagiarism](#)

[Forms for Postgraduate Students](#)

the Common Law System (Int. Group Q)

Cancel Save as Draft Submit

### 1. Assignment Information

Name: Assignment 2 (75%)

Instructions: This is the Assignment Dropbox for your **Take-home Assignment - Assignment 2 (75%)**. Remember! You are also required to submit an identical hard copy of your submission at the Information Desk, Level 3, New Law School Building, Eastern Avenue, 201 Miss Street between the hard copy submission

Assignment files should be keep your filename short in your filename, e.g. SIT

By submitting this assignm

**I certify that:**

1. I have read and
2. I understand th
3. This Work is s
4. I declare that this assignment is original and has not been submitted for assessment elsewhere, and acknowledge that the assessor of this assignment may, for the purpose of assessing this assignment:
  - a) Reproduce this assignment and provide a copy to another member of the Faculty of Law, and/or
  - b) Communicate a copy of this assignment to a plagiarism checking service (which may then retain a copy of the assignment on its database for the purpose of future plagiarism checking).

Information on plagiarism is available online at: [http://www.usyd.edu.au/ab/policies/Academic\\_Honesty\\_Cwk.pdf](http://www.usyd.edu.au/ab/policies/Academic_Honesty_Cwk.pdf)  
 NOTE! If you are unsure how to submit your files, please refer to the [Blackboard Learn video tutorials](#) for guidance.

**IMPORTANT! Remember to click on the 'SUBMIT' button AFTER you have uploaded / attached your file!**

Please note, in the case of a dispute, the time and date of submission as recorded on this eLearning site will be taken as the official record of submission so please ensure that you allow sufficient time to upload and submit your file!

Due Date 29 August 2011 5:00:00 PM

This is the Assignment Dropbox for your assessment item. You will generally find instructions here and a link to the academic dishonesty & plagiarism policy.

The due date is also listed.

To proceed, scroll down to the bottom of the page (see next slide).

THE UNIVERSITY OF SYDNEY

My Units of Study Staff Students

### 2. Assignment Materials

Submission

Text Editor is: ON

Normal 3 Arial B I U ebe | x x<sup>2</sup> | [Icons]

*Note: Please do NOT copy & paste your assignment text into this submission box!*

*Note: Please attach your assignment as a WORD file.*

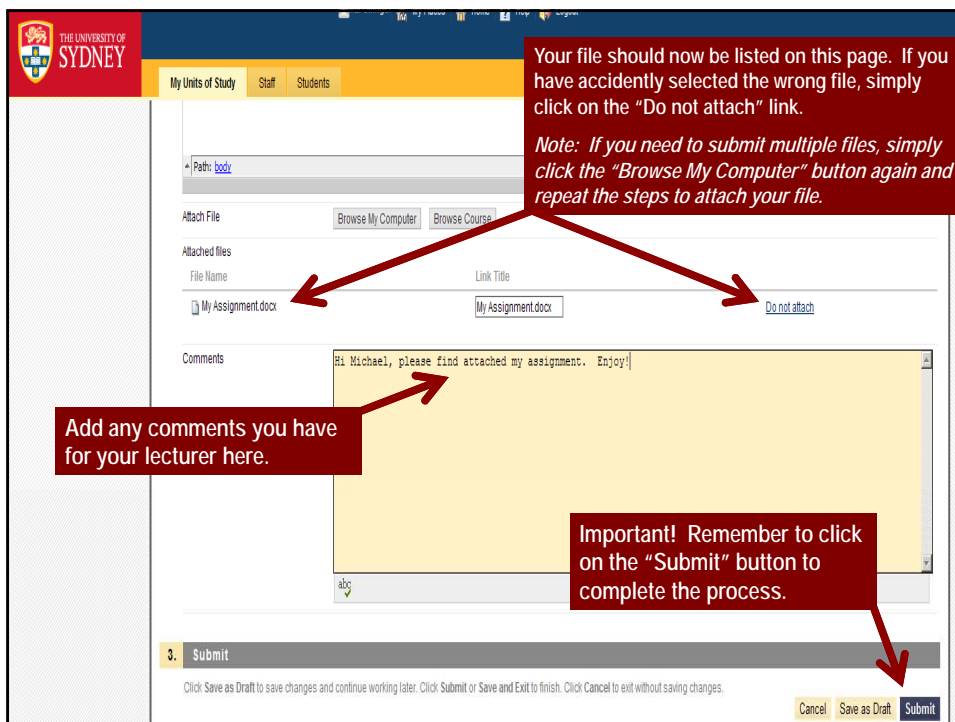
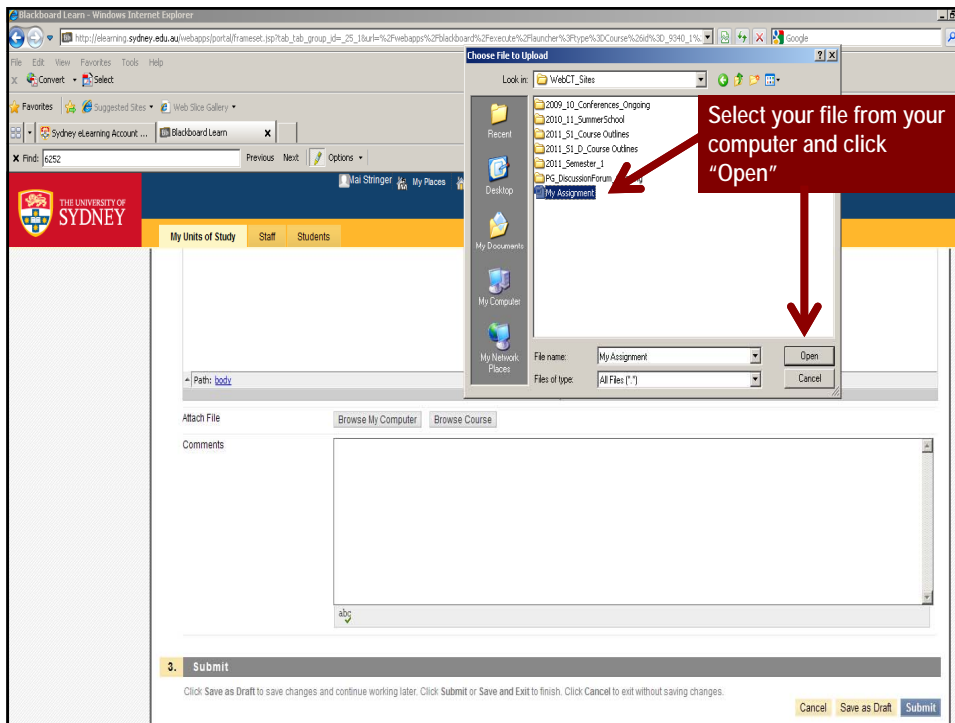
Path: body

Attach File Browse My Computer Browse Course

Comments

Click on the "Browse My Computer" button to browse your computer for your assignment file.

*Note: Please attach your assignment as a WORD file.*



The screenshot shows the Blackboard Learn interface in a Windows Internet Explorer browser. The page title is "Blackboard Learn - Windows Internet Explorer". The address bar shows the URL: [http://elearning.sydney.edu.au/webapps/portalframe/submit\\_tab\\_group\\_id=25\\_11?url=/webapp%2Fblackboard%2Fexecute%2Fteachers%2Fopen%2FCourse%24%2D5940\\_1%2F](http://elearning.sydney.edu.au/webapps/portalframe/submit_tab_group_id=25_11?url=/webapp%2Fblackboard%2Fexecute%2Fteachers%2Fopen%2FCourse%24%2D5940_1%2F). The page features the University of Sydney logo and navigation tabs for "My Units of Study", "Staff", and "Students". A yellow warning box at the top states: "IMPORTANT! Remember to click on the 'SUBMIT' button AFTER you have uploaded / attached your file! Please note, in the case of a dispute, the time and date of submission as recorded on this eLearning site will be taken as the official record of submission so please ensure that you allow sufficient time to upload and submit your files!". Below this, a table shows submission details for user "Mai Stringer": Due Date: 24 March 2011 5:00:00 PM, Points Possible: 0, Student Name: Mai Stringer. A section titled "2. Review Submission History" contains a table with one entry: "Submission ( 1 February 2011 10:24:25 AM )". This entry includes fields for "Submission Materials", "Submission Field", "Student Comments" (Hi Michael, please find attached my assignment. Enjoy!), "Attached Files" (a link to [My Assignment.docx](#)), "Instructor Feedback", "Grade: Needs Marking", "Comments", and "Attached Files". A "3. Finish" section at the bottom contains the text "Click OK to go back. Click Start New Submission to start new submission." and a "Start New Submission" button with an "OK" icon. A red text box on the right provides instructions: "To check whether you have submitted your assignment successfully, go back into the Assignment Dropbox and scroll to the bottom of the screen. The 'Review Submission' history section will show the date & time of submission and the file associated with it. Note: If you realise that you have submitted the wrong file, click on 'Start New Submission' and repeat the steps to submit your assignment." Red arrows point from the text box to the submission history entry and the "Start New Submission" button.

**IMPORTANT! Remember to click on the "SUBMIT" button AFTER you have uploaded / attached your file!**  
Please note, in the case of a dispute, the time and date of submission as recorded on this eLearning site will be taken as the official record of submission so please ensure that you allow sufficient time to upload and submit your files!

Due Date: 24 March 2011 5:00:00 PM  
Points Possible: 0  
Student Name: Mai Stringer

**2. Review Submission History**

Submission ( 1 February 2011 10:24:25 AM )

Submission Materials  
Submission Field  
Student Comments: Hi Michael, please find attached my assignment. Enjoy!  
Attached Files: [My Assignment.docx](#)  
Instructor Feedback  
Grade: Needs Marking  
Comments:  
Attached Files:

**3. Finish**  
Click OK to go back. Click Start New Submission to start new submission.

To check whether you have submitted your assignment successfully, go back into the Assignment Dropbox and scroll to the bottom of the screen.

The "Review Submission" history section will show the date & time of submission and the file associated with it.

*Note: If you realise that you have submitted the wrong file, click on "Start New Submission" and repeat the steps to submit your assignment.*

Start New Submission

## Need Help?

Ms Mai Stringer

Email: [law.elearning@sydney.edu.au](mailto:law.elearning@sydney.edu.au)

Phone: 02 9351 0328