

# University Learning Management System (WebCT) Upgrade Project

## Background

The University is undertaking an upgrade to its existing WebCT program which will see us move from version Campus Edition 4.1 to Campus Edition 6.1. This decision arose after 18 months of deliberation by the eLearning Management Reference Group, chaired by the Pro-Vice-Chancellor (Learning and Teaching), with advice from the Chief Information Office, and with representation from across the University.

## Why the move?

The aim of the WebCT Upgrade Project is to provide a newly supported, standard, scaleable enterprise-wide learning management platform. The existing WebCT platform:

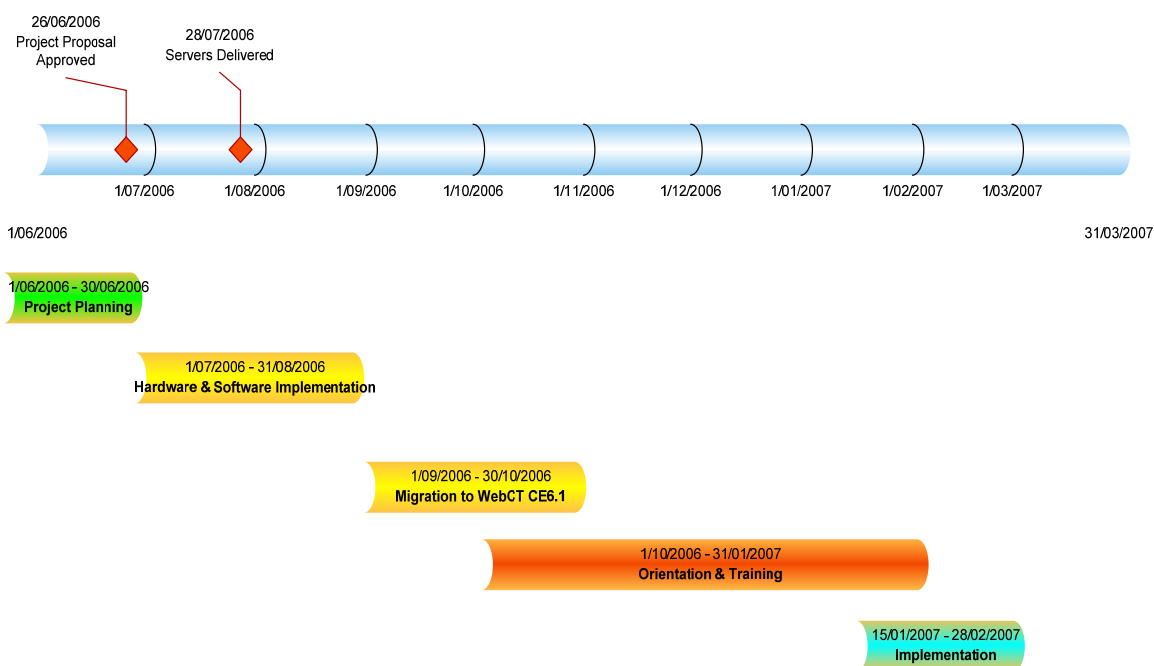
- does not have the same level of functionalities for students and staff that the new system will provide;
- uses an increasingly unsupported version of the Campus Edition software
- uses a software platform that is not meeting new interoperability standards;

The upgrade involves moving from version CE4.1 to version CE6.1, which is a substantial technological upgrade, both in functionalities for learners, and in technological architectural needs for infrastructure. Without timely and appropriate upgrades to the University LMS, the quality of the on-line part of the students' whole learning experience will fall below acceptable standards being established by the higher education sector in Australia and internationally. The Resources and Learning and Teaching portfolios of the University are collaborating to provide the new learning management system and materials to staff and students in stages during 2006.

## Milestones in 2006 for use in 2007

- Hardware and software systems installed by end of August
- Bug-testing and trialling of software functionalities through September.
- Migration of unit of study websites to new system through October
- Orientation seminars and workshops for staff to the new version of WebCT from October-December
- Redevelopment of unit of study materials on new system by Staff from October-January
- Usual processes for publishing the units of study on-line in February, 2007.

## LMS WebCT Upgrade Project



### **Impact on users of the University LMS (WebCT)**

**Q** How will migration occur?

**A** All of the migration activities between the existing WebCT version 4 to the new Campus Edition 6.1 will be managed by the USyd eLearning Team. All efforts will be made to make the migration as helpful as possible for teachers.

**Q** Will my courses look like after moving to WebCT v6.1?

**A** Generally, courses that are moved into WebCT Campus Edition v6.1 will not need to be modified in order to work. However some of the tools may change and the course will look different. Teachers will need to familiarise themselves with where the functionalities they use are in the new interface.

**Q** What knowledge will I need to use the new version?

Orientation and training programs will be available for all staff. For those with significant experience, one hour seminar sessions that explain the new interface are likely to be sufficient. For those who wish more detailed explanation, rolling 2-hour workshops will be repeated over a 4 month period: October 2006 – January 2007. For those who wish deeper understanding, the beginner eLearning workshop series will run twice between now and first semester next year.

### **Project Contacts**

Dr Rob Ellis  
Director of eLearning  
USyd eLearning  
[r.ellis@vcc.usyd.edu.au](mailto:r.ellis@vcc.usyd.edu.au)  
02 9351 3781

Stephen Sheely  
eLearning Administrator  
USyd eLearning  
[ssheely@mail.usyd.edu.au](mailto:ssheely@mail.usyd.edu.au)  
02 9036 6213

Karen Davies  
Project Manager  
ICT Strategic Development &  
Planning  
[kdavies@usyd.edu.au](mailto:kdavies@usyd.edu.au)  
02 9351 8560