

YOUR GUIDE TO
POSTGRADUATE
STUDY AT
SYDNEY MEDICAL SCHOOL
2012



THE UNIVERSITY OF
SYDNEY

Our mission is to improve the health and wellbeing of people in Australia and elsewhere by educating and supporting compassionate clinicians, medical scientists, health professionals and researchers whose work drives advances in health.

Across all our education programs, our vision is to develop caring, clear-thinking, clinically outstanding, research-capable and globally engaged graduates who have the capabilities to become leaders in medicine, public health and research.

CONTENTS

OVERVIEW

- 02 Welcome to Sydney Medical School
- 03 Postgraduate programs overview
- 04 About us

COURSEWORK PROGRAMS

- 06 Postgraduate coursework studies
- 08 Courses on offer in 2012

RESEARCH PROGRAMS

- 17 Our research
- 18 Higher research degrees
- 20 Honours research
- 21 Institutes and centres

HOW TO APPLY AND GENERAL INFORMATION

- 22 Coursework programs
- 24 Postgraduate coursework options
- 28 Higher research degrees

IMPORTANT DATES

APPLICATION DEADLINES

DOMESTIC STUDENTS	INTERNATIONAL STUDENTS	NOTE
30 NOVEMBER 2011 FOR SEMESTER ONE INTAKE	31 OCTOBER 2011 FOR SEMESTER ONE INTAKE	Application closing dates for some scholarships and Commonwealth supported places may vary. See sydney.edu.au/medicine/future-students/postgraduate/apply-enrol for specific application closing dates.
15 MAY 2012 FOR SEMESTER TWO INTAKE	30 APRIL 2012 FOR SEMESTER TWO INTAKE	

Sydney Medical School acknowledges the traditional owners of the land on which the University of Sydney campuses and the Sydney Medical School's teaching hospitals are built: the Cadigal people of the Eora Nation; the Deerubbin people; the Tharawal people; the Ngunnawal people; the Wiradjuri people; the Gamilaroi people; the Bundjulong people; the Wiljali people and the Gureng Gureng people.

This brochure was printed by Sydney Medical School in May 2011 to provide information to applicants for entry in 2012. Information was correct at the time of publication. See sydney.edu.au/medicine/future-students to check for any updated information.

This publication is printed on Novatech, an environmentally responsible paper certified by the Forest Stewardship Council (FSC). The paper is produced from mixed-source pulp from well-managed forests and other controlled sources and is elemental chlorine free (ECF). Printed with vegetable-based inks by SOS Print and Media, an FSC Chain of Custody certified printer.

WELCOME TO SYDNEY MEDICAL SCHOOL

We live in exciting times for medicine and health care, and as a direct corollary, exciting times for medical schools. Every day new research helps us to better prevent, diagnose and treat disease. Neither the discoveries, nor the speed at which they are being made, were imaginable even a couple of decades ago. Nor can they be predicted now.

No one has a crystal ball – all we can really be certain of is that change will happen, new areas of research will emerge, and new technologies will be developed. These will affect the way we care for our patients, how we prevent and treat disease, how we direct our medical resources, and how we educate and train medical students, health and medical researchers, and all members of the health and medical professions.

More than at any time in the past, lifelong learning is essential for health professionals. We have designed our postgraduate and short professional courses for medical practitioners and others who work to improve health outcomes in this and wider communities. Our courses provide new skills and the knowledge professionals need to continue to make as great a contribution as possible in a period of unprecedented change.

The basis of advancements in health care is research and the acquisition of new knowledge. Our aim, for all our graduates, is that they contribute to increases in medical knowledge. We focus on providing research students with the training and opportunities that will allow them to play leading roles in shaping the future of research and health care.

Sydney Medical School is the oldest in Australia, and one of the best, which was reflected in our medical ranking of 29th in the 2011 QS World University Rankings. The medical school



offers world-class research facilities in basic and clinical sciences, and in public health. We are affiliated with outstanding researchers and research institutes, and our students gain tremendous advantage through being able to access this diverse range of expertise and training opportunities.

Following a recent review of our research strengths and capabilities, we have strengthened our focus on diseases of national and international importance. Our commitment is to ensure students have the foundation to pursue careers in research into health problems that affect millions of lives.

PROFESSOR BRUCE ROBINSON
Dean, Sydney Medical School

POSTGRADUATE PROGRAMS OVERVIEW

POSTGRADUATE COURSES OPEN TO MEDICAL AND NON-MEDICAL GRADUATES

- Bioethics
- Biostatistics
- Brain and Mind Sciences
- Clinical Epidemiology
- Clinical Trials
- Genetic Counselling
- Health Communication
- Health Policy
- HIV and Sexual Health
- Indigenous Health Promotion
- Indigenous Health (Substance Use)
- Infection and Immunity
- International Public Health
- Medical Humanities
- Ophthalmic Science
- Pain Management
- Psychotherapy
- Public Health
- Qualitative Health Research
- Reproductive Health Sciences and Human Genetics
- Sleep Medicine

POSTGRADUATE COURSES OPEN ONLY TO MEDICAL GRADUATES

- Clinical Surgery
- International Ophthalmology
- Paediatric Medicine
- Refractive Surgery
- Surgery

RESEARCH HIGHER DEGREES (Honours and PhDs)

- Honours
- Master of Philosophy
- Master of Surgery (Research)
- Doctor of Philosophy



SHORT PROFESSIONAL COURSES (Degree and non-degree)

Sydney Medical School (SMS) offers a range of short professional development courses for medical and other health professionals.

Courses are offered in many areas including respiratory medicine, mental health, diabetes, nuclear medicine, skin cancer, sexual health, drug and alcohol use, paediatrics and public health.

Courses vary in length from one day to an entire semester, as some stand-alone professional development courses offered are existing units of study in our postgraduate programs.

A number of courses are recognised by relevant professional bodies and may earn CME points while others can be counted towards a postgraduate award. For a full listing of available courses please visit the SMS website sydney.edu.au/medicine

GRADUATE-ENTRY MEDICAL PROGRAM

The Sydney Medical Program (SMP) is a four-year graduate-entry course leading to the award of the undergraduate degrees of Bachelor of Medicine and Bachelor of Surgery (MBBS).

For more information on programs and admission details, see sydney.edu.au/medicine/future-students or contact Lise Mellor (lise.mellor@sydney.edu.au) to receive a copy of the SMP brochure.

For information on all courses, visit sydney.edu.au/medicine

HOW TO APPLY

See page 22 onwards for detailed information about how to apply, costs and scholarships.

See page 23 for information about English-language requirements.

You'll find more useful information at sydney.edu.au/medicine/future-students/postgraduate/apply-enrol

ABOUT US



Sydney Medical School was established in 1856 and is the oldest in the country. For more than 150 years, our medicine, public health and research graduates have been working in all health fields and all around the world.

We are committed to educating all our students to be globally focused, critical thinkers and well-equipped for a lifetime of learning, with the skills to absorb and evaluate new evidence that will become available during their careers.

Our education and research programs rank highly across every national and international competition measure. In 2010 researchers at Sydney Medical School and affiliated institutes were awarded the highest amount of project grants from the National Health and Medical Research Council (NHMRC), reflecting the quality and impact of their work.

Our research covers a wide spectrum, from basic sciences to the public health measures needed to control epidemics.

We run major programs in diseases that affect millions of lives, including cancer, obesity, diabetes, cardiovascular disease, infectious diseases, mental illness, ageing, maternal and child health.

We are strongly committed to building international research connections, especially in South-East Asia, and have growing connections in China, Vietnam, Indonesia and India.

With an extensive and closely linked network of research institutes and major teaching hospitals, our teachers, clinicians and researchers are directly involved at every level in improving health care in our own communities and beyond.

EDUCATION

- 1285 medical students across four years of the program
- 800 postgraduate research students
- 1100 postgraduate coursework students.

HIGH COMPETITIVE RANKINGS

- Ranked 19th best university in the world for research in biomedical and life sciences
- Ranked 15th best biomedical university in the world (Times Higher Education-QS Rankings 2010)
- First in 2010, NHMRC Project Grants.

INTERNATIONAL

- International network of partner research institutes and medical schools in Asia, Europe and North America. Formal links offer education and research exchanges in Asia (China, Vietnam, Indonesia) as well as in leading centres in Europe and North America.

NETWORK OF LEADING TEACHING HOSPITALS AND RESEARCH INSTITUTES

- Metropolitan clinical schools and research centres and programs at Royal Prince Alfred Hospital, Royal North Shore Hospital, Westmead Hospital, Children's Hospital at Westmead, Concord Hospital, Nepean Hospital
- Rural teaching hospitals with affiliated research centres: clinical schools and departments at Dubbo, Orange, Broken Hill and Lismore.

RESEARCH THEMES

- Our work covers health and medical research from molecular basis of disease through to clinical research and clinical trials, from public health issues to health policy development.
- Our research covers the full spectrum of diseases.

- We run major research programs in cancer, cardiovascular disease, diabetes, obesity, infectious diseases, mental health, neuroscience, maternal and child health, chronic diseases and ageing.

RESEARCH CENTRES AND INSTITUTES

- Our major research programs in schools, centres and institutes, include the Bosch Institute, the Brain and Mind Research Institute, the Centenary Institute of Cancer Medicine and Cell Biology, the Children's Medical Research Council, the George Institute for International Health, the Kolling Institute for Medical Research, the NHMRC Clinical Trials Centre, the Pain Management Research Institute, the Save Sight Institute, the Sydney Emerging Infections and Biosecurity Institute, the Westmead Millennium Research Institute and the Woolcock Institute for Medical Research.

POSTGRADUATE COURSEWORK STUDIES

At Sydney Medical School we offer an extensive range of postgraduate study opportunities, including degrees by coursework and professional short courses and seminars.

FAST FACTS:

POSTGRADUATE DEGREES BY COURSEWORK

- Extensive range: 26 courses on offer in 2012.
- Open to medical and non-medical graduates.
- Available as master's degrees, graduate diplomas and certificates.
- Full-time or part-time study options available.
- Many master's courses can be completed in one year on a full-time basis.
- Flexible modes of delivery, many available fully online.
- Taught by medical scientists who are leaders in their fields.
- In most courses students can complete individual units of study without enrolling for full degrees.

SHORT PROFESSIONAL COURSES

- Extensive range, from one day seminars to full semester programs.
- Courses open to medical and non-medical graduates.
- Many recognised by professional bodies and earn CME points. These may be counted towards postgraduate award.

POSTGRADUATE COURSES OPEN TO MEDICAL AND NON-MEDICAL GRADUATES

We are offering 26 postgraduate courses at Sydney Medical School for entry in 2012. A list of courses and brief summary are available on pages 24 to 26.

Most of our courses are open to medical and non-medical graduates, as long as they have qualifications and/or experience relevant to the program of study. For more information, see the admission information listed with each course outline, or visit our website.

DURATION

Many master's degrees can be completed in one year of full-time study, although some require up to two years. In some programs you may be required to produce a research dissertation once you have completed the coursework units of study.

Graduate diplomas can require up to one year of full-time study or equivalent, while graduate certificates usually require half a year of full-time study or equivalent. These courses generally have no research component.

In some cases, a graduate certificate, graduate diploma and master's degree are 'articulated', which means they share coursework units of study. This allows you to transfer from one level to another (for example, from a graduate

certificate to a graduate diploma), and obtain credit for coursework you have already completed.

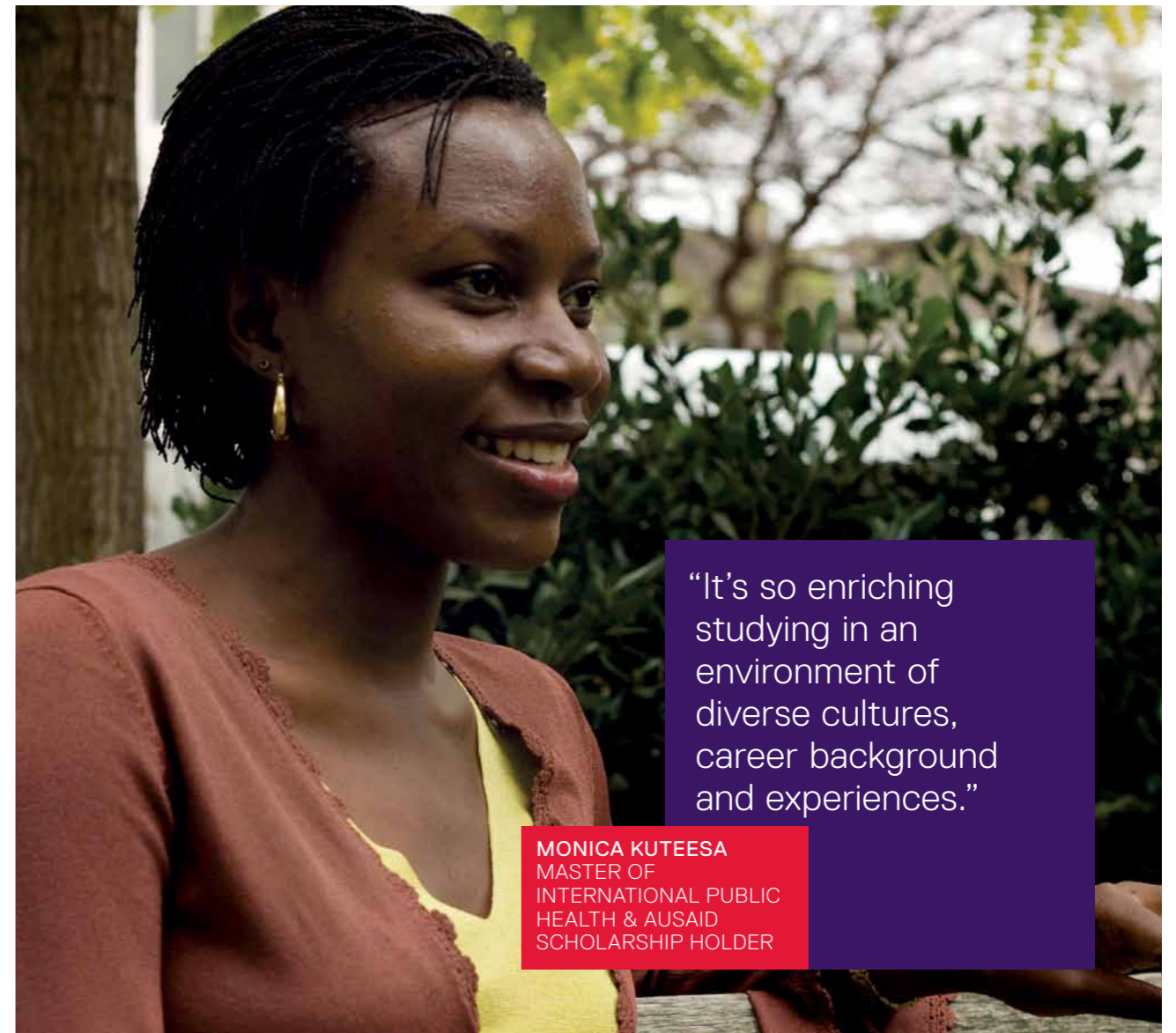
ADMISSIONS

Admission requirements vary from program to program but in general all master's degrees require, as a minimum, the completion of a bachelor's degree from a recognised university. They frequently require students to have completed an honours degree, although many will also consider professional expertise in the absence of an honours year. Some specialist programs build on an undergraduate degree so must be in the same field. The Master of Medicine and the Master of Surgery programs require a medical degree.

GRADUATE DIPLOMAS AND CERTIFICATES

Graduate diplomas and certificates generally include subjects from the master's programs, and provide an exit point after fewer units of study. The admission requirements for these courses also vary. For example, admission into a graduate diploma usually requires the completion of a bachelor's degree at a satisfactory standard in any field from a recognised institution and/or for the applicant to have several years work experience.

In most programs a satisfactory performance allows students to transfer to a graduate diploma and/or master's degree, subject to approval.



"It's so enriching studying in an environment of diverse cultures, career background and experiences."

MONICA KUTEESA
MASTER OF
INTERNATIONAL PUBLIC
HEALTH & AUSAID
SCHOLARSHIP HOLDER

FLEXIBLE STUDY

If you are interested in a particular topic, you can complete individual units of study without having to enrol for a full-award course – such applicants are considered 'non-award students'.

Others may wish to undertake a unit of study as part of an award course from another institution and are considered 'cross-institutional applicants'. If you are in this category, you should arrange with your home institution to have the unit of study approved and credited towards your award course.

PROFESSIONAL DEVELOPMENT AND SHORT COURSES

Many of our postgraduate courses offer units that can be taken alone as a professional development course. Some units confer professional development

credits. All provide the opportunity to upgrade your knowledge in your field or find new areas of expertise.

Many other short professional courses are available. For a list, see our website.

FOR MORE INFORMATION

The Sydney Medical School website gives specific information on courses, content, units of study, admission requirements, whether the course is available by distance or face-to-face, and more.

sydney.edu.au/medicine

For formal course requirements of University of Sydney and Sydney Medical School courses, see sydney.edu.au/handbooks

POSTGRADUATE COURSEWORK SCHOLARSHIPS

Each year numerous scholarships are awarded for postgraduate coursework study. For more information, visit sydney.edu.au/medicine/scholarwards/postgrad/coursework.php

COURSES ON OFFER IN 2012

BIOETHICS

Bioethics is concerned with ethical questions that arise in the context of biological and health sciences, and reflects advances in biomedical technologies, as illustrated by contemporary debates over cloning, stem cell research, reproductive technologies and genetic engineering.

Topics include abortion, euthanasia, relationships between health care providers and patients, research involving humans and animals, justice in the distribution of medical resources, and ethical issues related to global public health.

Admission requirements:

Bachelor's degree in any relevant field

Course coordinator:

Dr Catherine Mills

E catherine.mills@sydney.edu.au

BIostatISTICS

Biostatistics is the application of statistical techniques to scientific research in health-related fields, including medicine and public health. Biostatisticians play essential roles in designing studies, analysing data and creating methods to solve research problems.

Our courses provide advanced biostatistical training for a diverse range of students and are delivered by distance learning.

Admission requirements:

Bachelor's degree in relevant discipline, a proven aptitude for advanced mathematical work, and successful completion of an introductory course in statistics (see website for details).

Course coordinator:

Professor Judy Simpson

E judy.simpson@sydney.edu.au

BRAIN AND MIND SCIENCES

These courses promote interdisciplinary research, encouraging investigation that addresses disease in areas of the brain and mind. For example, in the search to improve life for people with dementia, you will receive core training exposing you to several different areas.

These include the connection between basic laboratory research in Alzheimer's, Parkinson's and Prion disease, access to human imaging facilities for research to better understand active processes within the brain, clinical neuropsychological principles and interventions in degenerative dementias such as cognitive behavioural therapy and the clinical treatment of movement disorders.

Our courses provide focused education and training for the next generation of science, medical, nursing, psychiatry and psychology workforces, which will help them meet the needs of those suffering from disorders of the brain and mind.

You will have access to cutting edge technologies such as human and animal imaging equipment, animal models, the sleep laboratory, the eye tracker and our neurophysiology laboratory.

Courses are accredited with the Royal Australian College of Psychiatrists, the Royal Australian College of General Practitioners and the Australian Psychological Society.

Admission requirements:

Bachelor's degree in a relevant discipline

Course coordinator:

Professor Timothy Lambert

E tim.lambert@sydney.edu.au

CLINICAL EPIDEMIOLOGY

Clinical epidemiology is the science of applying the best available research evidence to patient care. Our courses provide clinicians with the opportunity to learn the principles of clinical epidemiology and best evidence.

We have designed the program to ensure you apply the theory you learn to patient-based examples, and are able to quickly integrate that theory into your day-to-day work. The program provides a solid foundation if you want to pursue a research career.

Admission requirements:

Normally requires either a Bachelor of Medicine/Bachelor of Surgery (MBBS) or a bachelor's degree in a health discipline with first-class or second-class honours.

Course coordinator:

Professor Jonathan Craig

E jonathan.craig@sydney.edu.au



CLINICAL SURGERY

Surgical training in New South Wales is provided under the auspices of the Royal Australasian College of Surgeons (RACS). The Doctor of Clinical Surgery program is designed to be undertaken in conjunction with the surgical training program of RACS to augment research, leadership and communication skills.

This new program is taught through clinical and non-clinical coursework and research. The course aims to produce surgical leaders with attitudes and skills that meet the challenges of modern specialist surgical practice, and help students to develop research skills that equips them for an academic career.

Admission requirements:

A medical degree, eligibility to undertake surgical training in NSW, and evidence of excellence in undergraduate and postgraduate careers. Additional requirements are set by the Discipline of Surgery and include an interview. Candidates who possess an RACS Fellowship or equivalent may be granted an exemption of up to 66 credit points.

Course coordinator:

Professor Mohamed Khadra

E mohamed.khadra@sydney.edu.au

CLINICAL TRIALS RESEARCH

This program aims to provide state-of-the-art interactive learning opportunities in the design, conduct and interpretation of clinical trials so you can make an independent and meaningful contribution to clinical research in Australia.

The program in clinical trials has two pathways: Research or Practice.

The Research pathway, offered through Sydney Medical School's NHMRC Clinical Trials Centre, aims to equip health professionals with the abilities to lead the design, conduct and interpretation of clinical trials and contribute to clinical trials research.

The Practice pathway, offered through the Sydney Nursing School, is for registered nurses and other health professionals who are currently working or planning to pursue a career within the field of clinical trials practice.

Admission requirements:

Relevant bachelor's degree from a recognised institution.

Course coordinator:

Professor Anthony Keech

E tony@ctc.usyd.edu.au

GENETIC COUNSELLING

A genetic counsellor, as a member of a medical genetics team, provides families with information about conditions that are caused by inherited variations in single genes, multi-genes and gene-environment interactions and risk.

They also give information about the availability of screening and genetic testing, and provide support for decision-making, dealing with the impact of test results and family communication.

Genetic counsellors can work in state-provided health genetics services – which provide prenatal, paediatric and adult genetic counselling, including family cancer clinics. They can also work for some private providers, such as IVF and ultrasound clinics.

Admission requirements:

Relevant degree, previous studies in human genetics and counselling experience is preferred. The enrolment process includes an interview.

Course coordinator:

Professor David Silience

E davids@chw.edu.au



HEALTH COMMUNICATION

Our health communication courses combine the expertise of the Media and Communications Department in the Faculty of Arts and the School of Public Health to provide comprehensive and specialised teaching.

The courses will equip you with knowledge, understanding and expertise across media and health disciplines. We use a cross-disciplinary, collaborative approach to areas such as media production, media relations, organisational communication, public health, campaign development, advocacy, health promotion and bioethics. The courses are designed to meet the needs of those working as, or wishing to work as, health communicators.

Admission requirements:

Bachelor's degree with a major in the humanities, health, social and other sciences or public health. Candidates without a bachelor's degree may be admitted if they have sufficient professional experience. Applicants must provide a CV and employer references in support of their application.

Course coordinator:

Dr Fiona Giles
E fiona.giles@sydney.edu.au

HEALTH POLICY

These courses offer a critical perspective on how our health care system operates. They emphasise the importance of power and value choices, focusing on the interaction of governments with the private and community sectors in shaping policy.

This unique program will extend your professional skills. You will learn about the forces shaping the health policy environment, be able to work with professional confidence across the health sector and be familiar with the workings of high-level national and international health policy networks.

Students learn how to develop and implement health policy through the application of knowledge to health policy issues and analysis of current health policy directions.

Admission requirements:

Three-year degree, or an equivalent qualification approved by the University of Sydney.

Course coordinator:

Dr James Gillespie
E james.gillespie@sydney.edu.au

HIV AND SEXUAL HEALTH

Sexually transmitted infections (STIs) present major public health concerns in developed and developing countries, with millions of adults and children becoming infected with human immunodeficiency virus (HIV) and other STIs each year. This program is globally recognised as a leader in the field and attracts many domestic and international students.

The course provides high levels of knowledge and skills related to the diagnosis, management and control of STIs, including HIV infection. The program will be of interest to a wide range of professionals who currently work in the field, and those who want to develop expertise in the area.

Admission requirements:

Medical degree or a bachelor's degree in a health discipline with first or second-class honours, or equivalent from an approved institution.

Course coordinator:

Associate Professor Richard Hillman
E richard.hillman@sydney.edu.au



INDIGENOUS HEALTH PROMOTION

This program gives Aboriginal and Torres Strait Islander health workers and practitioners the opportunity to add to their knowledge and skills in promoting the health of the community. Our courses help you acquire the expertise to identify community needs and strengths, develop a plan of action, put it into practice and then evaluate it to identify the extent to which positive changes have occurred.

Admission requirements:

Open to people of Aboriginal or Torres Strait Islander background who have a mature personality and relevant employment experience. Criteria taken into account when assessing candidates include:

- experience working in Aboriginal and Torres Strait Islander communities
- prior learning that shows you can complete a course of study
- knowledge of, and sensitivity to, working with Aboriginal and Torres Strait Islander people
- support for your candidature from their local communities and, where possible, your employers.

Course coordinator:

Ms Suzanne Plater
E suzanne.plater@sydney.edu.au

INDIGENOUS HEALTH (SUBSTANCE USE)

Aboriginal and Torres Strait Islander health professionals play a unique role in their communities, particularly with regard to clinical service delivery in the areas of the use and misuse of alcohol, tobacco and other drugs.

These courses build the clinical, public health and academic capacity of Indigenous health professionals. This is the highest university-level qualification in Indigenous health aspects of substance use and misuse that is recognised at a national level.

Admission requirements:

Open to persons of Aboriginal or Torres Strait Islander background who have a mature personality and relevant employment experience. The following criteria will be taken into account when assessing and selecting candidates:

- number of years of work experience related to alcohol, tobacco and other drug abuse
- prior education
- workplace assessment/advice/support of employer.

Course coordinator:

Associate Professor Kate Conigrave
E kate.conigrave@sydney.edu.au

INFECTION AND IMMUNITY

Infectious, sometimes life-threatening, diseases are found all over the world. As well as increasing resistance to antibiotics, the return of known pathogens and advance of new ones make infectious diseases a challenge for science.

Our integrated scientific approach reflects the current state of knowledge regarding infectious microorganisms and their pathogenesis, immunology and the immune responses to infection, and the epidemiology and control of infectious diseases.

The program covers the principles and practices advocated for the effective prevention or minimisation of infectious diseases in hospitals and laboratories, among the general community, and during disease outbreaks. It also provides training in state-of-the-art laboratory techniques used in the disciplines of infectious diseases and immunology.

Admission requirements:

Medical or science degree.

Course coordinator:

Dr Jim Manos
E jim.manos@sydney.edu.au

INTERNATIONAL OPHTHALMOLOGY

This program focuses on the specific training needs of clinicians in developing countries. It provides the skills to practise ophthalmology at the highest level, with emphasis on the specific diseases and pathologies of students' home countries.

Clinical and basic sciences are taught online, while local and visiting mentors provide clinical teaching and supervision in the students' working environment.

You will gain knowledge and practical skills on the prognosis and management of common eye conditions, diseases and injuries. There is the opportunity for extensive practical experience, including performing ophthalmic surgery and managing postoperative complications.

Medical graduates in the Asia-Pacific region will gain particular benefit from this comprehensive course, as it can lead to qualifications endorsed by their local health ministry.

Admission requirements:

Bachelor of Medicine/Bachelor of Surgery from an approved institution.

Course coordinator:

Dr John Grigg
E johng@eye.usyd.edu.au

INTERNATIONAL PUBLIC HEALTH

These courses are ideal if you want an international career in the area of public health. The program emphasises a modern approach to public health in low- and middle-income countries.

Our staff have extensive international experience working in countries such as Cambodia, China, India, Indonesia, Vietnam, Ghana, Kenya, Uganda and sub-Saharan Africa.

The courses cover control of infectious diseases such as malaria and HIV/AIDS, as well as the new epidemic of non-communicable diseases.

The program leads to employment opportunities with non-government

organisations (NGOs) internationally and in Australia, government ministries in developing countries, multilateral and bilateral agencies such as AusAID, the United Nations or the World Health Organization, Australian health services and academic institutions.

Admission requirements:

Entry at graduate diploma level normally requires a three-year degree or equivalent qualifications. Entry to the master's program normally requires at least a four-year full-time degree (or its part-time equivalent) from a recognised institution. Non-degree professional qualifications and/or relevant experience and/or relevant qualifications may be taken into account.

Course coordinator:

Associate Professor Mu Li
E mu.li@sydney.edu.au

MEDICAL HUMANITIES

These courses explore the human side of medicine and aim to overcome the separation of clinical care from the human experience of illness through the use of concepts and analytic tools from various arts and social science disciplines.

The medical humanities provide insight into the human condition, and offer a historical perspective on medical practice. Paying attention to literature and the arts will help you develop and nurture skills of observation, analysis, empathy, and self-reflection. The social sciences help you understand how bioscience and medicine take place within cultural and social contexts and how culture interacts with the individual experience of illness and the way we practise medicine.

Admission requirements:

Normally a bachelor's degree.

Course coordinator:

Dr Claire Hooker
E claire.hooker@sydney.edu.au

OPHTHALMIC SCIENCE

Ophthalmic science aims to prevent blindness, promote eye health in the community and rehabilitate those with a visual disability. Our courses give you the core knowledge and understanding of basic ophthalmic science, which enables you to practise ophthalmology at the highest possible level.

You will gain practical skills, including the ability to understand the applications of ophthalmic equipment, familiarity with anatomical specimens, prosections, radiographs and electron micrographs, and the ability to apply psychometric testing to obtain reliable and repeatable data. Graduates will be able to apply these skills to their careers in the visual sciences.

Admission requirements:

Relevant bachelor's or medical degree.

Course coordinator:

Dr John Grigg
E johng@eye.usyd.edu.au

PAEDIATRIC MEDICINE

Practical course topics in this program are taught in a case-based interactive online format by expert clinicians. To complement the online delivery, active discussion is encouraged among students and course conveners.

Units focus on recent advances and controversial or novel topics. They consist of case-based interactive clinical scenarios, weekly discussion forums and self-directed learning. The units stand alone with no prerequisites, offering maximum flexibility in an adult learning environment.

The courses provide the latest practical and theoretical knowledge of paediatric medicine. Clinical leaders develop our program, resulting in a curriculum that reflects many key aspects of early specialist trainee knowledge.

Admission requirements:

Medical degree.

Course coordinator:

Dr Anne Morris
E annem3@chw.edu.au

**PAIN MANAGEMENT**

These courses expand knowledge in the basic sciences, concepts and procedures of pain assessment and management, by providing clinically relevant teaching about the principles, contributors, assessment and management of pain and its context within the community.

This is the premier international degree program in pain management, run in collaboration with three leading international universities and staffed by world leaders in pain management treatment and research. It provides materials of the highest calibre in an online format that gives complete flexibility and ready access for students.

Admission requirements:

Bachelor's degree with honours in a health-related discipline (or equivalent professional experience instead of honours), or a medical degree.

Course coordinator:

Grace Tague
E grace.tague@sydney.edu.au

PSYCHOTHERAPY

Psychotherapy covers a range of techniques that can be used to improve an individual's mental health. The aim of this program is to train clinicians to deal effectively with people who suffer from psychological disorders that cannot be helped by more traditional psychotherapies. These include personality disorders, generalised anxiety disorder, dysthymia and chronic depression.

Admission requirements:

Medical degree or a relevant bachelor's degree with honours (equivalent professional experience may be substituted). You also need experience in a clinical area related to mental health, and be registered to practise in NSW with relevant professional indemnity insurance.

Course coordinator:

Dr Anthony Korner
E anthony_korner@wsahs.nsw.gov.au

PUBLIC HEALTH

Our public health courses aim to improve the health of populations through knowledge (collecting data to develop and test explanations and hypotheses), values (combining ethics with knowledge to assist in decision-making), action (making decisions to translate research into policy and practice and advocate for change) and outcomes (understanding research and practice to systematically evaluate public health programs).

Admission requirements:

Admission normally requires a minimum of a four-year full-time degree (or its part-time equivalent) from a recognised institution, or equivalent experience.

Course coordinator:

Associate Professor Tim Driscoll
E tim.driscoll@sydney.edu.au



QUALITATIVE HEALTH RESEARCH

Qualitative researchers observe people as they go about their usual activities, interview them, conduct focus groups, and examine related documents and images. They analyse the resulting data to gain a better understanding of the issues at hand. Being a qualitative researcher means being open to surprise and expecting the unexpected.

Qualitative research is becoming increasingly popular in health-related fields such as medicine, public health, nursing, allied health, dentistry and health policy.

Qualitative health research can help policymakers, clinicians, health promotion professionals and consumers to understand the perspectives people bring to their health, the values they hold, and the actions they take.

The course provides information and training specific to researching the health and medical context, which is a thriving and well-supported area with a great research need.

Admission requirements:

You must hold a degree from a recognised institution, or have passed a preliminary examination or examinations prescribed by Sydney Medical School.

Course coordinator:

Dr Stacy Carter
E stacy.carter@sydney.edu.au

REFRACTIVE SURGERY

Refractive surgery is an ever-expanding area within the field of ophthalmology that encompasses laser and non-laser vision correction. Such surgery has traditionally been performed by surgeons in large private clinics, but in recent years has become accepted as part of mainstream ophthalmic care. Laser eye surgery is now the most frequently performed eye operation in Australia.

Our program teaches refractive surgery theory and practice, complementing distance learning with a two-week placement in an accredited refractive surgical centre, including time spent

in the wet lab at Sydney Eye Hospital. Jointly offered with the University of Auckland, it was the first program of its kind in the world. Our lecturers include internationally recognised corneal and refractive surgeons.

Admission requirements:

You must have a medical degree and either be in your final year of accredited training with the Royal Australian and New Zealand College of Ophthalmology (RANZCO) or an equivalent body, or registered to practise ophthalmology in your state/territory or country. Applicants must have medical indemnity insurance.

Overseas-trained specialists who wish to practise in Australia will require documentation from the Royal Australian and New Zealand College of Ophthalmologists (RANZCO) that they have met RANZCO guidelines for specialist practice in Australia.

Course coordinator:

Dr Gerard Sutton
E gerard.sutton@theeyeinstitute.com.au



REPRODUCTIVE HEALTH SCIENCES AND HUMAN GENETICS

The fields of reproductive health science, reproductive medicine and human genetics have expanded rapidly in recent years. If you already work in these areas, or are a graduate looking to embark on a career in those sectors, our courses offer an opportunity to gain insight into these rapidly growing disciplines.

The program aims to improve knowledge of recent developments in reproductive health sciences, reproductive medicine and human genetics. It also helps students acquire new skills for clinical practice and further their education in research methodology and critical appraisal of relevant literature.

Admission requirements:

A medical degree or degree in biological or health sciences from an approved tertiary institution. Graduates from other disciplines with special interest in these fields may also apply. Admission normally requires a bachelor's degree with first or second-class honours, or equivalent.

Course coordinator:

Dr Robert Markham
E robert.markham@sydney.edu.au

SLEEP MEDICINE

Sleep medicine is a sub-specialty that impacts a number of fields, including respiratory medicine, cardiology, neurology, dentistry and psychology. The discipline also has wider implications for health sciences and public health.

Our program provides up-to-date information on the theory and practice of sleep medicine through distance education. The courses provide training in clinical, theoretical and research techniques in the field of sleep medicine and help to establish criteria for best practice in the field.

Admission requirements:

Either a medical degree with one year of postgraduate experience in the field of sleep medicine, or a bachelor's degree in an appropriate discipline (such as biology or a health science) with first or second-class honours from an approved institution, and at least one year of postgraduate experience in the field of sleep medicine.

Course coordinator:

Professor Colin Sullivan
E colin.sullivan@sydney.edu.au

SURGERY

Sydney Medical School is home to one of the largest academic surgical departments in Australasia. Our courses give an understanding of the principle of applying the best available research evidence to patient care, and the skills required for clinical research.

The knowledge you will develop will complement the practical experience you obtain as advanced trainees in surgery at teaching hospitals through the Royal Australasian College of Surgeons training program.

Admission requirements:

Graduate Diploma in Surgery: You must have successfully completed an MBBS from an approved university or have equivalent qualifications (subject to approval by the Dean).

Master of Surgery: You must have successfully completed a medical degree from the University of Sydney (or equivalent). Also, you must be either:

- a current Fellow of the Royal Australasian College of Surgeons (RACS) (or equivalent); or
- a registered trainee on the Surgical Education and Training program of RACS (or equivalent); or
- be currently employed as an intern or resident medical officer in the public hospital system in Australia.

Admission in this category requires an interview with and approval from the Head of the Discipline of Surgery, or their nominee.

Course coordinator:

Professor James May
E james.may@sydney.edu.au

OUR RESEARCH MAJOR THEMES AND DISCIPLINES

Sydney Medical School's research is organised around six thematic areas which reflect the major global health challenges.

A number of disciplines underpin these key research themes, bringing together expertise in areas such as genetics, biostatistics, imaging and public health, and providing critical input across the full spectrum of medical research.

CANCER

Finding new treatments and fighting for control of cancer

Cancer research is grouped around seven broad areas of scientific interest: biology, etiology, prevention, early detection, diagnosis and prognosis, treatment, cancer control, survivorship and outcomes research, and scientific model systems.

OBESITY, DIABETES AND CARDIOVASCULAR DISEASE

Reducing the impact of obesity, diabetes and cardiovascular diseases with medical and lifestyle approaches

Sydney Medical School's already considerable expertise in this area will increase significantly with the planned creation of a major international biomedical precinct. It will be dedicated to multidisciplinary translational research focused on the prevention and treatment of serious chronic diseases, including cardiovascular and metabolic diseases, cancer, respiratory diseases and neuropsychiatric conditions.

INFECTION AND IMMUNOLOGICAL CONDITIONS

Understanding the body's immune response to stop emerging infectious diseases

Sydney Medical School has recently led the establishment of a new multidisciplinary research and advisory initiative, the Sydney Institute for Emerging Infectious Diseases and Biosecurity, with the aim of managing the threat of infectious disease, reducing the risk, and building intelligent surveillance systems.

NEUROSCIENCES AND MENTAL HEALTH

Understanding the brain and nervous system and converting discovery into treatment

Our research covers a complex span from structure to function of the brain, spinal cord, peripheral nerves and muscle, through genetics, biochemistry and physiology to pharmacology and pathology. Sydney neurophysiologists diagnose human motor control disorders and our clinical neuroscientists investigate and treat the neuromuscular disorders that are a major cause of ongoing disability in childhood. Others investigate diseases of the brain and mind, including substance abuse, clinical depression and dementia.

CHRONIC AND PREVENTABLE DISEASES

Preventing injury and reducing the burden of chronic disease

By investigating issues such as chronic disease and ageing, our researchers are tackling the leading causes of death, disability and reduced quality of life in all advanced industrialised nations and in an increasing number of low-income nations.

REPRODUCTIVE, MATERNAL AND CHILD HEALTH

Health and wellbeing throughout life including well-timed and planned families

Excellent reproductive health for men, women and children, together with effective medical care, are essential to give every individual the potential for a happy, healthy and productive life. Our researchers are pursuing important questions that impact upon the health of the local and international community and cover the full spectrum from conception to lifelong health.

"My research investigates the role of growth factors and their mechanism in fat cell differentiation in insulin resistance. The findings from this study will provide greater insights into the nature of the multifaceted metabolic syndrome."

WILLIAM SONG
PhD CANDIDATE
DEPARTMENT OF
ENDOCRINOLOGY

HIGHER RESEARCH DEGREES

Sydney Medical School has more than 800 students working towards higher research degrees. Students are based across the faculty, in clinical schools, research centres and institutes, and are engaged in an extraordinary range of projects over a wide number of disciplines.



A range of scholarships are available to domestic and international students enrolled in a higher research degree. For more information see page 28.

Research degrees have two purposes. The first is to prepare a substantial piece of work that represents a significant contribution to a particular field of study; the second is to train candidates in general research methodology and equip them with transferable research skills.

FINDING A RESEARCH SUPERVISOR

Before you submit an application form to a research degree, you must:

- find a research supervisor with expertise in the relevant field
- ensure that appropriate research facilities are available
- define your research topic.

There are two ways you can search for a supervisor in your chosen field.

Research Supervisor Connect (RSC)

This is a unique web-based system developed by the University of Sydney to help students find PhD projects and supervisors. It provides information about available projects and the research interests of supervisors,

and allows you to make contact with them through the website and track your enquiry.

Potential students can search this site using keywords or supervisors' names to find research projects available in their area of interest. The student can submit an enquiry for any listed project which will be directed to the relevant contact person.

sydney.edu.au/research/opportunities

Find a Researcher allows you to search for researchers at the Sydney Medical School by their area of expertise. It also gives information on their current grants, research activities, recent publications and contact details.

For full details visit sydney.edu.au/medicine/future-students/postgraduate/research/supervisor-search.php

POSTGRADUATE RESEARCH COORDINATORS

Each research discipline or unit at Sydney Medical School has at least one postgraduate coordinator. This person is a staff member who approves research degree applications and gives academic guidance and support to all the research students enrolled in a particular academic discipline.

Our current postgraduate coordinators are listed on page 29 by school and research discipline or unit. Please feel free to contact them by email.



“My research looks at performance-related disorders in wind musicians. I hope it will help students and teachers understand the function of the soft palate and raise awareness, so that future pedagogy can optimise performance and prevent injuries.”

ALISON EVANS
PhD CANDIDATE
SCHOOL OF
PUBLIC HEALTH

DEGREE NAME	DURATION	DEGREE CODE	CRICOS CODE
Doctor of Philosophy	3 to 4 years full time 3 to 8 years part time	KB000	006455J
Master of Philosophy *	1 to 2 years full time 2 to 4 years part time	KC083	057895G
Master of Surgery (Research)	2 to 3 years full time 3 to 4 years part time	KC000	012841D

* From 2011, the Master of Philosophy can be completed concurrently with the Sydney Medical Program.

HONOURS RESEARCH

A research-based 'honours year' can improve your career prospects or allow you to pursue a particular health and medical interest. Honours can also provide the gateway to further academic research, such as a PhD.

If you are a current undergraduate student, or graduated with a bachelor's degree in the past two years, from the Faculty of Arts (Bachelor of Liberal Studies only), the Faculty of Science or the Faculty of Health Sciences (or their equivalents at other Australian universities), then you may be eligible to enrol in an additional honours year with Sydney Medical School. Honours programs are available in the following disciplines:

- Anatomy and Histology
- Biomedical Science
- Infectious Diseases and Immunology
- Pathology
- Pharmacology
- Physiology.

In addition to projects directly offered by these disciplines, many collaborative projects are hosted by Sydney Medical School's hospital-based clinical schools and associated research institutes. Many of the projects in subject areas and disciplines described in this guide are also available as honours projects.

For more information, including how to apply, see sydney.edu.au/medicine/future-students/honours

If you wish to discuss your honours research project, please contact the research coordinator from the discipline you are interested in. A list of coordinators can be found on page 29.

ENTRY INTO HONOURS PROGRAMS

Entry is competitive. To qualify for an honours course, you must satisfy the entry requirements and criteria of the relevant faculty and discipline. To be considered for admission, you must:

- have qualified for or be a graduate with a pass degree from the relevant faculty, or hold an equivalent qualification from another institution
- have completed a relevant major relating to the intended honours discipline
- have achieved either a credit average in the relevant senior units of study (or equivalent at another institution)
- have met the Science Weighted Average Mark (SCIWAM*) requirement of at least 65 if applying through the Faculty of Science
- satisfy any additional criteria set by the relevant head of discipline
- be aware that admission is also subject to the availability of an appropriate supervisor and project.

For more details see sydney.edu.au/medicine/future-students/honours

* SCIWAM is the average mark received by a student for all the units of study they take in their second and third year. There is a 'WAM calculator' on the Faculty of Science website (sydney.edu.au/science/cstudent/ug/wam.shtml), which is also useful for calculating their SCIWAM. You do not have to have a major in or to have been taught by members of a particular discipline in order to do an honours program, but your undergraduate subjects must be relevant to the topic of your honours project.



"Doing honours was an inspirational experience. It allowed me to perform research independently in an ever-growing field, and equipped me with skills that I will use for the rest of my life."

MARK KRIVOGRAD
HONOURS GRADUATE

INSTITUTES AND CENTRES OUR RESEARCH POWERHOUSES

Sydney Medical School has an extensive network of research centres and institutes, which push the boundaries of medical knowledge, benefiting the community with the latest developments in a wide range of disciplines.

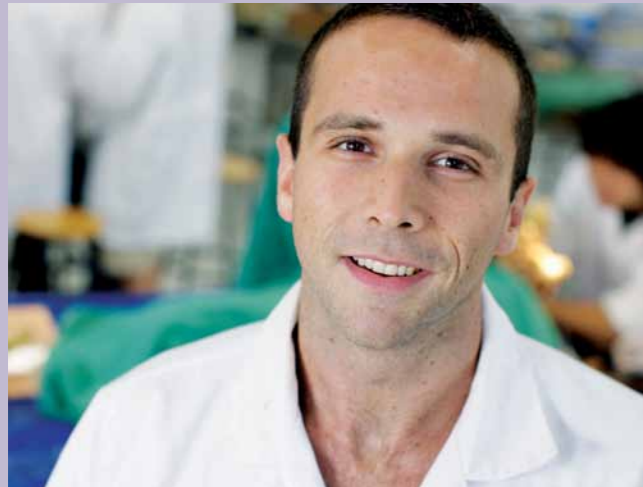
Our research institutes and centres include the following:

- **ANZAC Research Institute** has the long-term goal of prolonging enjoyable, independent living for older people. Research ranges from public and population health to clinical research, using transgenic models and cell and molecular biology.
- **The Boden Institute of Obesity, Nutrition and Exercise** takes a broad approach to combating and preventing obesity and lifestyle-related chronic disease. Its researchers have expertise across the whole human lifecycle, from pre-gestation to old age.
- **The Bosch Institute** tackles major questions about health and illness, with a focus on regenerative medicine, organ repair and transplantation.
- **Brain & Mind Research Institute** brings together clinical and basic neurosciences research in Australia, including discovery, innovative and integrative research strategies, clinical product development and application of research initiatives.
- **Centenary Institute of Cancer Medicine and Cell Biology** focuses on immunology and molecular medicine, and their applications to the diagnosis, prevention and treatment of diseases that are important in developed and developing countries.
- **Children's Medical Research Institute** conducts fundamental genetic research to understand the genes that are important for health and development, and the underlying causes of disease.
- **The George Institute for International Health** focuses on finding solutions for major health problems through research, policy development and capacity-building. It has international networks and long-term partnerships with universities, hospitals and research institutes worldwide.
- **The Heart Research Institute** targets the origins and mechanisms of the disease of blood vessels that cause heart disease and stroke.
- **Kolling Institute of Medical Research** focuses on molecular medicine. Programs include cancer genetics, cardiac injury and repair, neurogenetics, genetic screening, pain management and renal medicine.
- **National Centre for Immunisation Research and Surveillance of Vaccine Preventable Diseases** carries out research and surveillance on all aspects of immunisation.
- **The NHMRC Clinical Trials Centre** is a leader in clinical trials research in Australia, coordinating its own – and assisting others in conducting – large-scale, multi-centre trials.
- **Save Sight Institute** aims to ensure 'sight for life' for the whole community. Its research focus aims to influence better eye care through research, teaching and service and to empower the community to become advocates for eye health.
- **Sydney Emerging Infections and Biosecurity Institute** is a major new hub committed to meeting the challenge of emerging and re-emerging infectious diseases.
- **Westmead Millennium Institute of Medical Research** is one of the largest medical research centres in Australia. Its researchers are leaders in basic and clinical medical research, with a 'bench to bedside' philosophy aimed at translating basic research into successful clinical outcomes.
- **Woolcock Institute of Medical Research** concentrates on research in the fields of asthma, sleep disorders, chronic obstructive pulmonary disease, environmental respiratory problems, allergy and cystic fibrosis.

For a full list of our research centres and institutes, and to find out how you can join their programs visit sydney.edu.au/medicine/research/units/networks.php

COURSEWORK PROGRAMS

HOW TO APPLY AND GENERAL INFORMATION



DOMESTIC STUDENTS

If you are an Australian or New Zealand citizen or an Australian permanent resident then you are a domestic applicant.

For detailed information on application, admission and enrolment procedures, including the coursework application form for domestic students and a list of essential documentation, visit: sydney.edu.au/medicine/future-students/postgraduate/apply-enrol

CLOSING DATES FOR DOMESTIC APPLICATIONS:

30 November* for Semester One (commencement in March)

15 May* for Semester Two (commencement in July)

Late applications may be considered.

INTERNATIONAL STUDENTS

If you not are an Australian or New Zealand citizen or an Australian permanent resident then you are an international applicant. You will be considered as a domestic applicant if you hold dual citizenship with Australia, or New Zealand and another country.

FACE-TO-FACE COURSEWORK

The University's International Office processes all international student applications. The International Office is an important resource for international students as it helps with application and enrolment procedures and gives advice on admission requirements. For detailed information on application, admission and enrolment procedures, visit: sydney.edu.au/medicine/future-students/postgraduate/apply-enrol

Send completed international student coursework application forms with the additional documentation listed on the form to:

International Office
Level 4, Jane Foss Russell Building (G02)
The University of Sydney
NSW 2006
Australia

DISTANCE/ONLINE EDUCATION

International students applying for distance education courses do so through the Postgraduate Student Administration Unit. For more information visit our website: sydney.edu.au/medicine/future-students/postgraduate/apply-enrol

CLOSING DATES FOR INTERNATIONAL APPLICATIONS:

31 October* for Semester One (commencement in March)

30 April* for Semester Two (commencement in July)

* Please note that application closing dates for some scholarships and Commonwealth-supported places may vary. For specific application closing dates, see sydney.edu.au/medicine/future-students/postgraduate/apply-enrol

PLEASE NOTE

As information is subject to change, please refer to our website for current information.

sydney.edu.au/medicine/future-students



COSTS AND SCHOLARSHIPS

All postgraduate coursework courses are fee-paying, the only exceptions being the Graduate Diploma in Indigenous Health Promotion and the Indigenous Health (Substance Use) program, which are HECS-HELP eligible courses.

Fees are payable before each semester and relate to the cost of the units of study in which you are enrolling for that semester. Each year course costs increase by approximately 5 percent.

As a rough guide, it is anticipated that the annual fees for students starting coursework programs in 2012 will be:

- Domestic students: between \$17,600 and \$22,000
- International students: approximately \$35,800.

For detailed information about fees and scholarships for domestic and international students, visit sydney.edu.au/medicine/future-students/postgraduate/costs-scholarships

GOVERNMENT SUPPORT FOR DOMESTIC STUDENTS

Australian citizens with fee-paying places may be eligible to obtain a FEE-HELP loan from the federal government to pay their tuition fees. Students repay their loan through the taxation system once

their income reaches the minimum threshold for compulsory repayment. Alternatively they can make discounted upfront payments.

The following courses offer a number of publicly funded Commonwealth Supported Places (CSPs) to domestic students:

- Brain and Mind Sciences
- Clinical Epidemiology
- Health Policy
- Indigenous Health (Substance Use)
- Indigenous Health Promotion
- Infection and Immunity
- Psychotherapy
- Public Health
- Qualitative Health Research.

Student eligibility is assessed on merit. Similar to the FEE-HELP loan, students can repay their fees through the taxation system or make upfront payments. The number of CSPs offered depends on the course. Application closing dates for CSPs are usually earlier than the normal closing dates.

For full details visit these websites: sydney.edu.au/medicine/future-students/postgraduate/costs-scholarships

www.goingtouni.gov.au

ENGLISH LANGUAGE REQUIREMENTS

If English is not your first language, you must demonstrate English-language proficiency by one of the following means before we can confirm your admission.

1. Provide evidence of satisfactory achievement in tertiary studies in which the exclusive language of the institution (including instruction, examination and assessment) was English.
2. Achieve the required grades in the English for Academic Purposes course at the University's Centre for English Teaching (CET).
3. Achieve the required grades on an International English Language Testing System (IELTS) or Test of English as a Foreign Language (TOEFL) test.

For more information on these tests, please visit the IELTS website (www.ielts.org) or the TOEFL website (www.ets.org/toefl).

For full details of English Language requirements, visit our website: sydney.edu.au/medicine/future-students/postgraduate/apply-enrol

POSTGRADUATE COURSEWORK OPTIONS

DEGREE NAME	FACE TO FACE	DISTANCE/ONLINE	INTENSIVE/ BLOCK MODE	MINIMUM DURATION FULL TIME	PART-TIME/ FULL-TIME AVAILABILITY	SESSION 1 INTAKE	SESSION 2 INTAKE	DEGREE CODE	CRICOS CODE	CREDIT POINTS FOR AWARD
Master of Bioethics*	●			1	PT/FT	●	●	LC047	054972A	48
Graduate Diploma in Bioethics	●			1	PT/FT	●	●	LF037	054971B	36
Graduate Certificate in Bioethics	●			.5	PT/FT	●	●	LG019	N/A	24
Master of Biostatistics		●		3PT	PT	●	●	KC044	N/A	72
Graduate Diploma in Biostatistics		●		2PT	PT	●	●	KF034	N/A	48
Graduate Certificate in Biostatistics		●		1PT	PT	●	●	KG003	N/A	24
Master of Brain and Mind Sciences in Psychiatry	●	●		3PT	PT	●		KC090	N/A	72
Master of Brain and Mind Sciences	●	●		2PT	PT	●		KC089	068825G	48
Graduate Diploma in Brain and Mind Sciences	●	●		1PT	PT	●		KF067	068826G	36
Graduate Certificate in Brain and Mind Sciences	●	●		1PT	PT	●		KG019	068827F	24
Master of Medicine (Clinical Epidemiology)*	●	●		1	PT/FT	●	●	KC055	053865A	48
Master of Science in Medicine (Clinical Epidemiology)*	●	●		1	PT/FT	●	●	KC056	053863C	48
Graduate Diploma in Medicine (Clinical Epidemiology)	●	●		1	PT/FT	●	●	KF042	053864B	36
Graduate Diploma of Science in Medicine (Clinical Epidemiology)	●	●		1	PT/FT	●	●	KF043	053862D	36
Graduate Certificate in Clinical Epidemiology	●	●		.5	PT/FT	●	●	KG007	071480B	24
Master of Clinical Trials (Research)		●		1	PT/FT	●	●	KC096	N/A	48
Graduate Diploma in Clinical Trials (Research)		●		1	PT/FT	●	●	KF061	N/A	36
Graduate Certificate in Clinical Trials (Research)		●		1	PT/FT	●	●	KE020	N/A	24
Master of Clinical Trials (Practice)	●		●	1	PT/FT	●	●	GC068	N/A	48
Graduate Diploma in Clinical Trials (Practice)	●		●	1	PT/FT	●	●	GF026	N/A	36
Graduate Certificate in Clinical Trials (Practice)	●		●	1	PT/FT	●	●	GG015	N/A	24
Graduate Diploma in Genetic Counselling	●	●		1	FT	●	●	KF060	N/A	36
Master of Genetic Counselling	●	●		2	FT	●	●	KC095	N/A	96
Master of Health Communication	●	●		1	PT/FT	●	●	DC064	063948D	48
Graduate Diploma in Health Communication	●	●		1	PT/FT	●	●	DF040	063949C	36
Graduate Certificate in Health Communication	●	●		.5	PT/FT	●	●	DG036	063950K	24
Master of Health Policy	●			1	PT/FT	●	●	KC054	053869G	48
Graduate Diploma in Health Policy	●			1	PT/FT	●	●	KF041	053868J	36
Graduate Certificate in Health Policy	●			1PT	PT	●	●	KG006	N/A	24
Master of Medicine (HIV)/Master of Philosophy	●			2	FT			TBC	N/A	48^
Master of Science (HIV)/Master of Philosophy	●			2	FT			TBC	N/A	48^
Master of Medicine (HIV)	●			1.5	PT/FT			TBC	N/A	48
Master of Science in Medicine (HIV)	●			1.5	PT/FT			TBC	N/A	48
Graduate Diploma in Medicine (HIV)	●			1	PT/FT			TBC	N/A	36
Graduate Diploma of Science in Medicine (HIV)	●			1	PT/FT			TBC	N/A	36

Degree codes are subject to change. For current information, please refer to our website: sydney.edu.au/medicine

DEGREE NAME	FACE TO FACE	DISTANCE/ONLINE	INTENSIVE/ BLOCK MODE	MINIMUM DURATION FULL TIME	PART-TIME/ FULL-TIME AVAILABILITY	SESSION 1 INTAKE	SESSION 2 INTAKE	DEGREE CODE	CRICOS CODE	CREDIT POINTS FOR AWARD
Graduate Diploma in Indigenous Health Promotion	●			1	PT	●		KF022	N/A	48
Master of Indigenous Health (Substance Use)	●	●	●	2	FT	●		KC068	N/A	48
Graduate Diploma in Indigenous Health (Substance Use)			●	1	FT	●		KF049	N/A	36
Graduate Certificate in Indigenous Health (Substance Use)			●	.8	FT	●		KG012	N/A	24
Master of Medicine (Infection and Immunity)#	●			1	PT/FT	●	●	KC050	053964J	48
Master of Science in Medicine (Infection and Immunity)#	●			1	PT/FT	●	●	KC051	053871C	48
Graduate Diploma in Infection and Immunity	●			1	PT/FT	●	●	KF040	053873A	36
Graduate Certificate in Infection and Immunity	●			1	PT/FT	●	●	KG005	053872B	24
Master of International Ophthalmology*		●		1	PT/FT	●	●	KC069	N/A	48
Graduate Diploma in International Ophthalmology		●		1	PT/FT	●	●	KF048	N/A	36
Master of International Public Health*	●			1	PT/FT	●	●	KC053	054758G	48
Graduate Diploma in International Public Health	●			1	PT/FT	●	●	KF029	031688F	36
Master of Medical Humanities	●	●		1	PT/FT	●	●	KC070	046974K	48
Graduate Diploma in Medical Humanities	●	●		1	PT/FT	●	●	KF050	046975J	36
Graduate Certificate in Medical Humanities	●	●		.5	PT/FT	●	●	KG013	071479F	24
Master of Medicine (Ophthalmic Science)		●	●	1	PT/FT	●	●	KC047	N/A	48
Master of Science in Medicine (Ophthalmic Science)		●	●	1	PT/FT	●	●	KC048	N/A	48
Graduate Diploma in Medicine (Ophthalmic Science)		●	●	1	PT/FT	●	●	KF037	N/A	36
Graduate Diploma of Science in Medicine (Ophthalmic Science)		●	●	1	PT/FT	●	●	KF038	N/A	36
Master of Medicine (Paediatric Medicine)		●		1	PT/FT	●		KC073	N/A	48
Graduate Diploma in Medicine (Paediatric Medicine)		●		1	PT/FT	●		KF053	N/A	36
Graduate Certificate in Medicine (Paediatric Medicine)		●		.5	PT/FT	●		KG016	N/A	24
Master of Medicine (Pain Management)*		●		1	PT/FT	●	●	KC057	N/A	48
Master of Science in Medicine (Pain Management)*		●		1	PT/FT	●	●	KC058	N/A	48
Graduate Diploma in Medicine (Pain Management)		●		1	PT/FT	●	●	KF044	N/A	36
Graduate Diploma of Science in Medicine (Pain Management)		●		1	PT/FT	●	●	KF045	N/A	36
Graduate Certificate in Pain Management		●		.5	PT/FT	●	●	KG008	N/A	24
Master of Medicine (Psychotherapy)	●			3PT	PT	●		KC012	N/A	72
Master of Science in Medicine (Psychotherapy)	●			3PT	PT	●		KC045	N/A	72
Master of Public Health*	●	●		1	PT/FT	●	●	KC052	054757G	48
Master of Public Health (Professional Practice)**				.5	PT/FT	●	●	KC088	N/A	60
Graduate Diploma in Public Health	●	●		1	PT/FT	●	●	KF000	006457G	36

POSTGRADUATE COURSEWORK OPTIONS (CONTINUED)

DEGREE NAME	FACE TO FACE	DISTANCE/ONLINE	INTENSIVE/ BLOCK MODE	MINIMUM DURATION FULL TIME	PART-TIME/ FULL-TIME AVAILABILITY	SESSION 1 INTAKE	SESSION 2 INTAKE	DEGREE CODE	CRICOS CODE	CREDIT POINTS FOR AWARD
Master of Qualitative Health Research	●			1	PT/FT	●		KC087	068819F	48
Graduate Diploma in Qualitative Health Research	●			1	PT/FT	●		KF056	068820B	36
Graduate Certificate in Qualitative Health Research	●			1PT	PT	●		KG018	N/A	24
Master of Medicine (Refractive Surgery)		●	●	1	PT/FT	●	●	KC075	N/A	48
Graduate Diploma in Medicine (Refractive Surgery)		●	●	1	PT/FT	●	●	KF055	N/A	36
Master of Medicine (Reproductive Health Sciences & Human Genetics)/Master of Philosophy	●			2	PT/FT	●	●	KC085	066134G	48 [^]
Master of Medicine (Reproductive Health Sciences & Human Genetics)/Master of Philosophy	●			2	PT/FT	●	●	KC086	066135F	48 [^]
Master of Science in Medicine (Reproductive Health Sciences & Human Genetics)	●			2PT	PT		●	KC077	N/A	48
Master of Science in Medicine (Reproductive Health Sciences & Human Genetics)	●			2PT	PT		●	KC078	N/A	48
Master of Medicine (Sleep Medicine)		●		2.5PT	PT/FT	●		KC041	N/A	60
Master of Science in Medicine (Sleep Medicine)		●		2.5PT	PT	●		KC042	N/A	60
Graduate Diploma in Medicine (Sleep Medicine)		●		2PT	PT	●		KF031	N/A	48
Graduate Diploma of Science in Medicine (Sleep Medicine)		●		2PT	PT	●		KF032	N/A	48
Master of Surgery (by coursework)	●			1	PT/FT	●		KC049	006454K	48
Graduate Diploma in Surgery	●			1	PT/FT	●		KF039	058360G	36
Doctor of Clinical Surgery	●			3	PT/FT	●		KB004	068818G	144

* Honours available – 60 credit points required. A quota is applied to this degree.

** MPH (Professional Practice) open to students who have completed their MPH and have an average weighted mark of 75% or more in their first 24 units of coursework. Places are limited and candidates will be selected on merit. 60 credit points are comprised of 48 credit points from MPH plus 12 credit points from practice placement.

Research option available – 60 credit points required.

[^] Plus research thesis.

FT = Full time, PT = Part time.

TBC = To be confirmed.

Session 1: for most courses Session 1 is from the beginning of March until June.

Session 2: for most courses Session 2 is from the end of July until November.

Degree codes are subject to change. For current information,
please refer to our website: sydney.edu.au/medicine



HIGHER RESEARCH DEGREES

HOW TO APPLY AND GENERAL INFORMATION

HOW TO APPLY

Before you submit an application form for a research degree, you must:

- find a research supervisor with expertise in the relevant field
- ensure that appropriate research facilities are available
- define your research topic.

For more details, visit our 'Research Supervisor Connect' and 'Find a Researcher' websites (see page 18).

DOMESTIC APPLICANTS

If you are an Australian or New Zealand citizen or an Australian permanent resident you are considered to be a domestic applicant.

For detailed information on application, admission and enrolment procedures, including the research application form for domestic students and a list of essential accompanying documentation, see sydney.edu.au/medicine/future-students/postgraduate/apply-enrol

FEES AND SCHOLARSHIPS

DOMESTIC STUDENTS

The federal government-funded Research Training Scheme (RTS) covers tuition fees for all domestic research students for four full-time or eight part-time years for doctorate candidates; and two full-time or four part-time years for master's candidates.

In effect, so long as domestic students complete their research degrees within the specified periods, they are not required to pay tuition fees.

For detailed information about fees visit sydney.edu.au/medicine/future-students/postgraduate/costs-scholarships

Scholarships are available to support postgraduate coursework.

Sydney Medical School and the Medical Foundation offer numerous scholarships to Australian and New Zealand citizens or permanent residents of Australia

Send completed forms with the appropriate documentation to:
Student Services
Edward Ford Building (A27)
The University of Sydney NSW 2006

CLOSING DATES FOR DOMESTIC APPLICATIONS

We accept applications for research degrees all year round. There are two main enrolment and induction periods. Applications must be received by 31 January for the February intake and 31 May for the July intake.

INTERNATIONAL STUDENTS

If you are not an Australian or New Zealand citizen or an Australian permanent resident you are considered to be an international applicant.

For details about the application, admission and enrolment process for international students, visit sydney.edu.au/medicine/future-students/postgraduate/apply-enrol

who enrol full-time in research higher degrees within the Sydney Medical School. Scholarships are awarded on the basis of academic merit and any other criteria stipulated for individual scholarships. For more information see sydney.edu.au/medicine/future-students/scholarships

For information about Australian Postgraduate Awards and NHMRC scholarships visit the University's Research Office website: sydney.edu.au/future_students/costs_scholarships.shtml

Another useful resource is a large database that includes many scholarships funded by organisations external to the University of Sydney: www.jason.edu.au

INTERNATIONAL STUDENTS

Postgraduate research degrees are fee-paying courses. Fees are payable before each semester.

Send completed application forms with the appropriate documentation to:
International Office
Level 4, Jane Foss Russell (G02)
The University of Sydney NSW 2006
Australia

CLOSING DATES FOR INTERNATIONAL APPLICATIONS

We accept applications for research degrees all year round. There are two main enrolment and induction periods, in February and July. Applications must be received by 31 October for the February intake and 30 April for the July intake.

Closing dates for scholarships may vary; see sydney.edu.au/scholarships

ENGLISH LANGUAGE REQUIREMENTS

If English is not your first language, you must demonstrate English-language proficiency before we can confirm your admission. See page 23.

As a rough guide, it is anticipated that the annual fees for international research students starting in 2012 will range from \$31,000 to \$36,000, depending on the course. Each year study costs increase by around 5 percent.

For detailed information, see sydney.edu.au/medicine/future-students

For information about scholarships for international students visit sydney.edu.au/future_students/costs_scholarships.shtml and www.jason.edu.au

SUMMER SCHOLARSHIPS

Summer Research Scholarships are a unique opportunity for domestic undergraduate students to obtain research experience and work with well-established researchers in high-quality medical research facilities.

For detailed information visit sydney.edu.au/medicine/research/srs



SWETHA MURALI
PhD CANDIDATE

RESEARCH COORDINATORS

DISCIPLINE	COORDINATOR	EMAIL
Anaesthesia	Professor Peter Kam	medicine.pgc-anaesthesia@sydney.edu.au
Anatomy and Histology	Dr Frank Lovicu	medicine.pgc-anatomy@sydney.edu.au
Biomedical Science	Dr Fazlul Huq	fazlul.huq@sydney.edu.au
Brain and Mind Research Institute	Associate Professor Sharon Naismith	sharon.naismith@sydney.edu.au
Centenary Institute of Cancer Medicine and Cell Biology	Dr Christopher Semsarian	c.semsarian@centenary.org.au
Children's Medical Research Institute	Dr Tracy Bryan	tbryan@cmri.org.au
Clinical Ophthalmology and Eye Health	Dr Michele Madigan	medicine.pgc-eye@sydney.edu.au
General Practice	Professor Tim Usherwood	medicine.pgc-genprac@sydney.edu.au
Heart Research Institute	Dr Clare Hawkins	clare.hawkins@sydney.edu.au
Infectious Diseases and Immunology	Dr Allison Abendroth	medicine.pgc-immunology@sydney.edu.au
Kolling Institute of Medical Research	Dr Carolyn Scott	cscott@med.usyd.edu.au
Medical Humanities and Bioethics	Ms Lindy Gaze	lindy.gaze@sydney.edu.au
Medicine	Professor Gary Halliday (Royal Prince Alfred Hospital) Dr Vasikaran Naganathan (Concord Hospital) Dr Diana Learoyd (Northern Clinical School) Professor Jacob George (Western Clinical School)	medicine.pgc-medicine@sydney.edu.au
NHMRC Clinical Trials Centre	Associate Professor Anthony Keech	tony@ctc.usyd.edu.au
Obstetrics, Gynaecology and Neonatology	Dr Kirsten Black	medicine.pgc-obsgyn@sydney.edu.au
Paediatrics and Child Health	Dr Russell C. Dale	medicine.pgc-paediatrics@sydney.edu.au
Pathology	Dr Paul Witting	medicine.pgc-pathology@sydney.edu.au
Pharmacology	Dr Robert Vandenberg	medicine.pgc-pharmacology@sydney.edu.au
Physiology	Dr Margot Day	medicine.pgc-physiology@sydney.edu.au
Psychological Medicine	Dr Glenn Hunt	medicine.pgc-psych@sydney.edu.au
Public Health	Associate Professor Susan Quine	medicine.pgc-health@sydney.edu.au
Rural Health	Associate Professor Joe Canalese	medicine.pgc-rural@sydney.edu.au
Surgery	Associate Professor Ross Smith	medicine.pgc-surgery@sydney.edu.au
Woolcock Institute of Medical Research	Professor Norbert Berend AM	nberend@med.usyd.edu.au

Sydney Medical School
Student Services
T +61 2 9351 3132
F +61 2 9351 3196
E medicine.info@sydney.edu.au
sydney.edu.au/medicine/future-students

**SYDNEY MEDICAL
SCHOOL**



THE UNIVERSITY OF
SYDNEY

Produced by Marketing and Communications, the University of Sydney, May 2011.
The University reserves the right to make alterations to any information
contained within this publication without notice. 11/2536

ABN 15 211 513 464
CRICOS 00026A