



The University of Sydney

Australia

Nepean Clinical School

December 2008



## Building a Bigger and Better Clinical School

**Professor Michael Peek**

Associate Dean and Head of School  
NEPEAN CLINICAL SCHOOL

I am very pleased to announce that the University has purchased an apartment block close to the hospital to help accommodate our students and researchers. Over the next few months the building will be renovated with added facilities and security. Nepean is a popular destination for international students and visiting scholars. The building will also help local students who may wish to live close to the hospital.

Christmas is nearly upon us again. I would like to thank all our teachers, researchers and clinical school staff for their continued support of the clinical school and help in building up education and research in our area.

Merry Christmas and have a safe and Happy New Year.



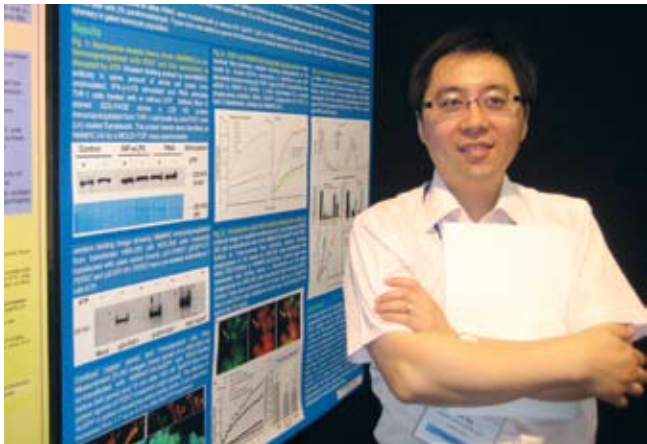
*The new University Student Accommodation at 29-33 Rodgers St, Kingswood*

**STOP PRESS** The University has exchanged contracts on the purchase of the land across the road from the main entrance to Nepean Hospital. It is envisaged that a building will be constructed on the land to help house the Clinical School and provide further facilities for our students and clinical research.

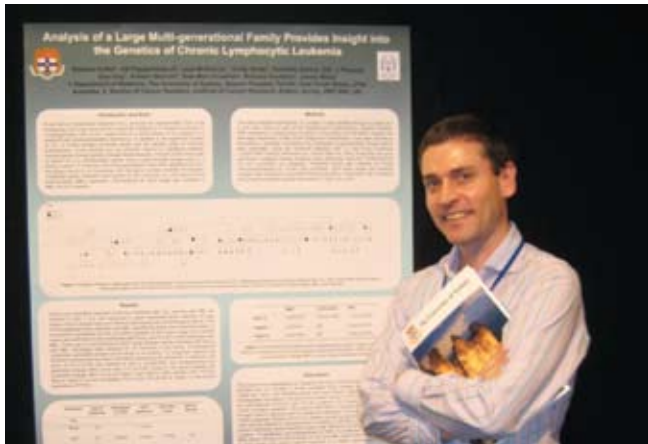
# “From Cell to Society 6”

Nepean Clinical School was well represented at this year’s University of Sydney’s “From Cell to Society 6” Research Conference which was held at the Fairmont at Leura.

We had a number of Professors and researchers attend including poster presentations from the following:



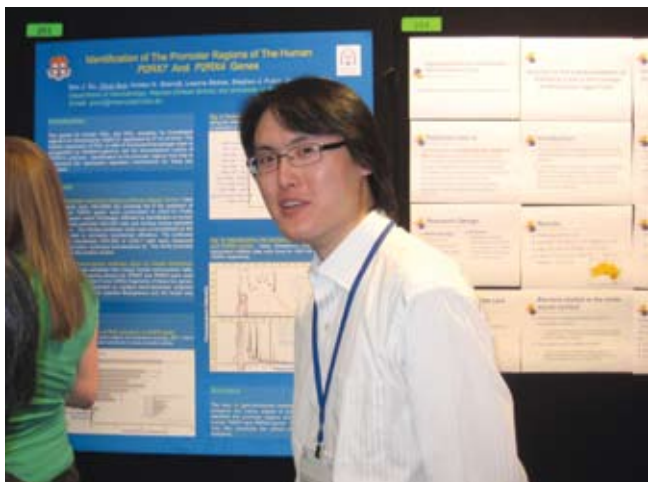
**Dr. Ben Gu** – “The P2X7 mediated phagocytic pathway: ATP attenuates this pathway via dissociating the P2X7 and non-muscle myosin IIA complex”



**Dr. Stephen Fuller** – “Susceptibility to Chronic Lymphocytic Leukaemia in a large multi-generational family”

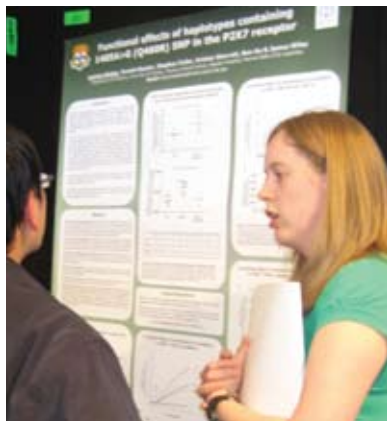


**Ann Quinton** – “The prediction of intra-uterine growth restriction with the head circumference to abdominal circumference (HC/AC) ratio: A new look at an old measurement”



**Chun Sun** – “Identification of the promoter regions of the human P2RX7 and P2RX4 genes”

**Dr. Leanne Stokes** – “Linkage Disequilibrium in the human P2X7 gene determines the functional effect of the Gin 460>Arg polymorphism associated with bipolar and depressive disorders”



Ben, Stephen, Leanne and Sue enjoying the dinner



## Paediatric Research – Led by Professor Ralph Nanan “T regulatory cells or getting the balance right”

The immune system effectively protects us against a whole range of foreign pathogens and against our own body cells when they become malignant. Whenever the immune system gets activated inflammatory processes occur. These processes have to be contained after a pathogen is eliminated or malignant cells have been destroyed. If the immune response is not switched off at the right time, things get out of balance and damage can be caused. More recently it has been discovered that the adequate regulation of immune responses is partly conferred by a special group of white blood cells called T regulatory cells.

Professor Nanan's group has taken great interest in investigating the role of T regulatory cells in humans. A more basic research question was investigated by the group, into how T regulatory cells develop throughout life and change their characteristics from the newborn period to late adulthood. They discovered that in healthy individuals these cells increase with age, and change some of their characteristics in a certain set pattern.

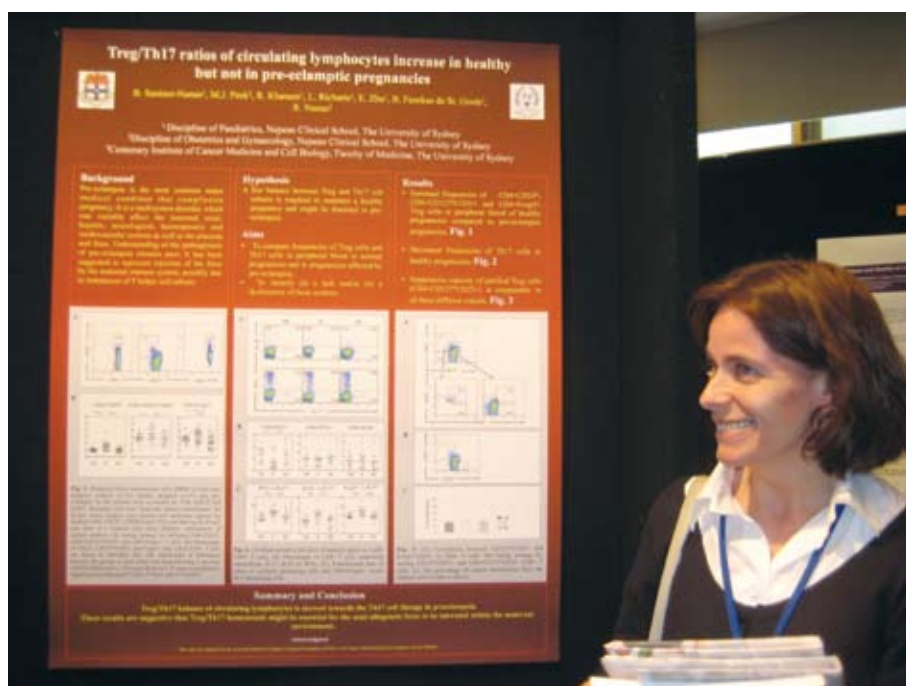
Such basic research findings are important to better understand and to further analyse these cells and their

role in many areas of immunological research, e.g. in protection against cancers and infections, in the development of allergies and autoimmune diseases or in organ transplantation. Based on their findings the group is now examining these cells in several clinical conditions like atopic eczema, thyroid disease, sepsis and preeclampsia.

### **Publications and Presentations**

1. Santner-Nanan B, Seddiki N, Zhu E, Quent V, Kelleher A, de St Groth BF, Nanan R. Accelerated age-dependent transition of human regulatory T cells to effector memory phenotype. *International Immunology*. 2008; 20(3):375-83.
2. Avery DT, Ma CS, Bryant VL, Santner-Nanan B, Nanan R, Wong M, Fulcher DA, Cook MC, Tangye SG. STAT3 is required for IL-21-induced secretion of IgE from human naive B cells. *Blood*. 2008; 112(5):1784-93.
3. Santner-Nanan B, Richarts L, Khanam R, Fazekas de St. Groth B, Peek M, Nanan R. Investigating the role of T regulatory cells in preeclampsia. *The Australasian Society for Immunology (ASI). Annual Meeting, Sydney, 2.-6. December, 2007.*

**Dr Brigitte Santner-Nanan**  
with her poster at “From Cell  
to Society 6” – “Increased  
TH17 cells and decreased  
CD4+FoxP3+T regulatory cells  
in third trimester pregnancies  
with pre-eclampsia”



# New Falls & Fracture Clinic opens at Nepean Hospital

The new Falls and Fractures Clinic at Nepean Hospital will help curb the rising incidence of falls injury among the elderly – one of the most significant health care issues facing our rapidly ageing community. No other single injury cause cost the health system more than falls injury. In fact, hospitalisation rates of older people due to falls have risen over the past 10 years and the associated costs are projected to rise rapidly over the coming decades.

The Falls and Fractures Clinic, an initiative of the University of Sydney and Nepean Clinical School, under the guidance of the recently appointed Associate Professor Gustavo Duque, will have a significant impact on the reduction of fall injuries among older people in the western Sydney community.

The clinic will allow a multidisciplinary team of health specialists to work together to identify older adults at high risk of falls and fractures and to implement appropriate interventions.

The Falls and Fractures Clinic is composed of two elements: an outpatients clinic and in-hospital assessment. The outpatient clinic will assess patients with osteoporosis and/or falls. Based on the level of risk, a multidisciplinary team of specialists will then develop a care plan. Patients will be referred from different settings including GPs in the community, orthopaedic/geriatrics wards and the emergency department.

The in-hospital assessment component utilised the expertise of Nepean Hospital's Department of Geriatric Medicine in providing care to patients with femoral neck fractures. The falls and fracture program will continue with the same system of assessment and follow up. Patients with non-femoral fractures will be assessed at the outpatients' clinic at week six post-discharge from the hospital/rehab centre.

A/Professor Gustavo Duque said patients would be assessed for balance and gait using the most advanced equipment available. "This equipment includes a Balance Rehabilitation Unit (BRU), a system not only for the assessment of balance, but also for balance rehabilitation, one of the main goals of the clinic," Dr Duque said. "The clinic also features a gait assessment unit known as GAITRite - the best and most advanced system for the assessment of gait in elderly patients."

The Falls and Fractures Clinic responds to NSW Health's 'The Management Policy to Reduce Fall Injury Among Older People', which presents a state-wide collaborative framework to address the magnitude of fall-related injury involving older people in NSW.

For further information on the Falls and Fractures Clinic please contact Mrs Leigh Bambury on (02) 4734 4278.

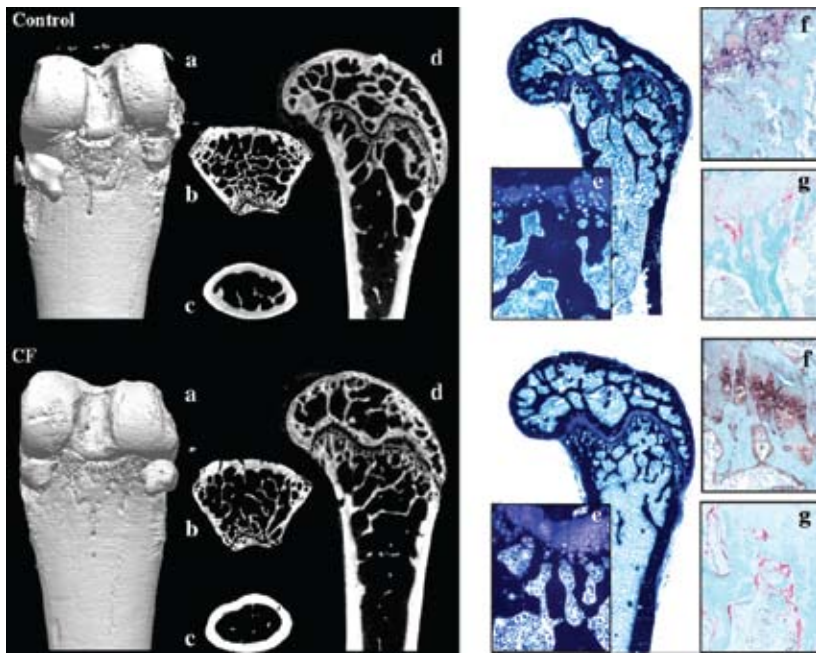
## **Falls Factbox**

- Fall injury is a major cause of injury related preventable hospitalisation
- In NSW during 1998-2002, there were 778 deaths of people aged 65 years and over as a result of a fall
- In 2002/03, 20,835 people aged over 65 years and over were hospitalised in NSW as a result of a fall-related injury, giving a hospitalisation rate of 2316 per 100,000 persons
- In NSW the total lifetime cost of falls in 1998-99 was estimated at \$644 million. This figure includes direct costs to the health system of \$333 million and mortality and morbidity costs of \$311 million



*Prof. Michael Peek, Dr. Anita Sharma, Matt Hou, A/Prof. Gustavo Duque, Prof. Kenneth Lyles and Dr. Hamlet Suarez at the opening*

## New Falls & Fracture Clinic opens at Nepean Hospital continued



These are images of plastic-embedded midsagittal sections of the distal femurs of 12-week-old control (left) and cystic fibrosis transmembrane conductance regulator-deficient (right) mice. The bones were stained with von Kossa and toluidine blue and originally photographed at  $\times 32.5$ .



Novartis representatives with our group



A/Prof. Gustavo Duque with Mrs Gwen McMaster-Fay (President of NMRF)



Gustavo's recent Publication's include the following:

- 1: Age-related bone loss in the LOU/c rat model of healthy ageing.  
Duque G, Rivas D, Li W, Li A, Henderson JE, Ferland G, Gaudreau P. *Exp Gerontol*. 2008 Oct 21. [Epub ahead of print]
- 2: Effect of Lamin A/C Knockdown on Osteoblast Differentiation and Function.  
Akter R, Rivas D, Geneau G, Drissi H, Duque G. *J Bone Miner Res*. 2008 Oct 10. [Epub ahead of print]
- 3: Bone and fat connection in aging bone.  
Duque G. *Curr Opin Rheumatol*. 2008 Jul; 20(4):429-34. Review.
- 4: Learning while having fun: the use of video gaming to teach geriatric house calls to medical students.  
Duque G, Fung S, Mallet L, Posel N, Fleischer D. *J Am Geriatr Soc*. 2008 Jul; 56(7):1328-32. Epub 2008 May 14.
- 5: Understanding the mechanisms of senile osteoporosis: new facts for a major geriatric syndrome.  
Duque G, Troen BR. *J Am Geriatr Soc*. 2008 May; 56(5):935-41. Review. Erratum in: *J Am Geriatr Soc*. 2008 Jul; 56(7):1378.
- 6: Intravenous zoledronic acid reduced new clinical fractures and deaths in patients who had recent surgery for hip fracture.  
Duque G. *ACP J Club*. 2008 Mar-Apr; 148(2):40. No abstract available.

**NOTE:** A/Prof. Gustavo Duque's symposium has been accepted at the World Congress of Gerontology next year in Paris. He is the only Australian institution with a symposium accepted at this important event.



Mrs Leigh Bambury and A/Prof. Gustavo Duque

# New Faces

**Li Wei** - Before setting foot in Penrith, I was uncertain if I had made the right decision to un-root myself from Montreal, Canada, where I have called home for the past thirteen years. A couple of weeks after my arrival, when I was asked to write this piece, I know I've found myself a new home with a big friendly family-like workplace.

As a child growing up on a university campus in China, I often followed my parents to their office and lab, and spent hours observing them work and experiment, moreover, I designed my own little experiments and started exploring this intriguing world of science through curiosity. This early introduction to research instilled in me the desire to pursue new challenges and explore new opportunities. This spirit and thirst for knowledge and experience is reflected throughout my life and led me to a Master's degree, China; a Licentiate of Philosophy, Sweden; and a MBA, Canada. Furthermore, I have set foot in a total of over thirty countries, gained valuable abilities in adapting to different environments and memorable experiences in appreciating of different culture and society.

My professional expertise covers a broad sphere of biomedical subjects. I played a leading role in the setup and service of a bone phenotyping platform, more specifically in phenotyping osteoporosis in a congenital mouse model and bone development in a knockout/transgenic mouse model. BMD, micro-architectural imaging, biomechanical testing, enzyme and growth factor-based assay and biomarkers are employed in order to monitor bone turnover, to phenotype bone development, and to identify QLT for osteoporosis susceptibility.

At one point, as a member of multi-disciplinary researchers and clinicians, I also led the project of cell-based tissue engineering on spinal disc repairing (using biomaterial and / or synthetic material). Moreover, my skills and experience in protein biochemistry were polished during my involvement in the investigation of molecular regulatory mechanism of neurofibrillary tangle in Alzheimer's patient brain.

In addition to research, I was in charge of project management of bone phenotyping service, I led a team

to build a service platform from the ground up, and provide a end-over-end technical service and contract research to biotech industry and academic research laboratory.

I love the outdoors, camping and hiking so the mountains are perfect for my lifestyle.

A new journey starts here, and Nepean Clinical School provides a perfect ground for blending my self-motivated work ethics and adventurous spirit. I think, or "I reckon", as an Aussie would say, I will prove to be a valuable addition to Nepean Clinical School.

**ACKNOWLEDGEMENT:** Gustavo Duque would like to thank The Nepean Medical Research Foundation and the University of Sydney's Medical Research Foundation for supplying the funds to recruit Li Wei.



*Li having her first "Australian - Chinese" meal with Vicki Anthony*



< Yalck Eysbouts  
- A dutch research student working with Dr. Sally Poulton on "ADHD and the use of stimulants in preschoolers"

Anna Virginia Franco >  
- A visiting scholar from St. Georges Hospital, London



---

## New Faces continued



**Miss Linda Bourne** has recently joined our Clinical School as Secretary to Professor Hans Peter Dietz, Associate Professor George Condous and Executive Officer Denise Thornhill.

Linda attended school in Liverpool, England followed by a Business and Secretarial course then worked as a legal Secretary/Barristers Clerk for many years.

She has had a variety of work since moving to Australia, including being personal Assistant to Professor Earl Owen, Microsurgeon in Sydney, and Personal Assistant to the late John Newman MP.

Linda has been with the Sydney West Area Health Service for 11 years and has recently moved to North Richmond on acreage which has allowed her to fulfill a dream of having her horses and 2 dogs with her.

"I am enjoying working at the Clinical School and find the staff very friendly."

---

**Beth Bendell** has a Bachelor of Nursing and did an elective in Primary Health Care in 2000 at Chiang Mai University, Thailand.

She graduated with a Dip.Ed. in Midwifery working at Nepean Hospital with an interest in models of care we provide and breastfeeding. In 2008 she achieved IBCL (International Board of Lactation Consultants).

Beth is an ALSO (Advanced Life Support in Obstetrics) Instructor and travels Australia teaching multidisciplinary workshops.

In July 2008 she travelled to Thailand to teach ALSO to the Burmese and Karen people in refugee camps and clinics.

Beth works teaching drills to the medical students (see article on student page).



**Thomas McCorquodale** is a medical science student from the University of Technology Sydney. He is working with Prof. Jack Wall and Dr. Hooshang Lahooti on their eye muscle antibody research. While initially terrified at the prospect of having a "real" job, he is enjoying the work and the people he works with.

When not working, Tom enjoys music, getting out into the bush, backpacking around the world, and volunteering at Teen Ranch - a Christian-based outdoor recreation camp where he leads children from all over Australia and the world.

# Teaching Drills for Obstetric Emergencies to Year 4 Medical Students.

As the CME of Postnatal Ward at Nepean Hospital, I began training the staff on the wards to respond to obstetric emergencies in a systematic way. Professor Peek heard about the drill sessions for Postpartum Haemorrhage and Cord Prolapse and asked me if I would do the drills with the Year 4 Medical Students during the Perinatal & Women's Health Rotation.

Drills were held for small groups over two Fridays. The drills were held early in the student's program, so this was totally new to all of them. The drills are

designed to encourage and motivate the participant, identify and reduce potential risks in the clinical setting and encourage debriefing, reflective practice and interdisciplinary and teamwork skills.

The simulation of drills as a learning tool enables active learning and fun, links theory and practice and a systematic approach to managing a specific emergency.

The students were enthusiastic and receptive to the drills, they were a pleasure to teach. Some comments from the students:

"Great to go over the procedure more than once". It really confirms things in your head. Wonderful job! One of the best clinical sessions I've ever had in three years of medicine!"

"Was useful especially since this is a very common thing we will be facing in the ward. Learnt a lot about active management and PPH management that I would otherwise not".

I look forward to teaching the drills in 2009 and to further developing the drills program.

**Beth Bendell**

## "A Students Account": Reinforcing Theoretical Knowledge with Clinical "Experience" – Drills for Cord Prolapse & Post Partum Haemorrhage



*Medical Students being instructed on procedures before drill run.*

It's 11 am and I have just walked in to interview a new mum. She tells me she would be happy to talk to a medical student even though she has just had a long, tiring delivery, delivering twins who have been whisked away. She is on her own; staff have left her to rest. First she asks if I can look at something, pulling away the sheet to show a bloody mess between her legs. Quickly I press the help buzzer and

look at the time. Almost instantly, 3 other medical students show up, one with the guidelines for management of post partum haemorrhage, how lucky! Going through each of the steps, we provide the best medical care possible to this plastic torso in front of me, providing both physical and pharmacologic support. Miraculously we return the patient to "her" pre-morbid state.

Yes, it's a drill, we go through all of the steps with occasional reminders from Beth Bendell, our tutor, who is running the whole scenario. Even so it is hard to not get caught up in the moment. After finishing my scenario, each of the other three medical students has a chance to play a different role and we do the drill again.

The repetition allows us to watch others while cementing the steps in our head. As medical students, this drill along with a similar one for cord prolapse, allowed us to get our heads out of books and practice real world scenarios, reinforcing theoretical knowledge with clinical "experience." Plus the drills make me feel like I am part of the team and comfortable with such emergencies if they do arise. Many thanks to Beth for her time and commitment in teaching the drills and to Professor Peek for incorporating the drills into the Perinatal & Women's Health teaching program.

**Bryan Schnabel - Year 4 Student**



*Marilyn being bandaged*



*Marilyn and students*

# News - Marilyn is off to the country!

Marilyn (aka Maz) Reed, our Procedural skills educator / Med 1 coordinator will be taking 12 months leave from January 2009 and relocating to country Boggabri where her husband has been posted with the Ambulance service of NSW. Boggabri, meaning 'Place of many creeks' is a tiny town (with approximately 1000 people) located in the northwest slopes of NSW approximately 1.5hrs west of Tamworth. Maz had originally planned to become a

lady of leisure for the next 12 months but during a short visit to Boggabri in early November, Maz was offered 2 jobs and has accepted a casual position in Boggabri as a Nurse in the General Practice which is housed in the John Prior Multi Purpose Service.

Narelle Brown, Clinical Nurse Specialist from Nepean Emergency Department will be relieving Marilyn in 2009.

## Our Experience at Nepean Hospital

We are both 5th medical students from Newcastle University in the UK and were lucky enough to spend our 8-week elective period at Nepean Hospital during June and July 2008.

Our main reasons for selecting Nepean Hospital as our elective destination were, firstly due to its location, between Sydney and the Blue Mountains, two places we were very keen to visit, and secondly due to the wide range of specialities offered to elective students. The elective was easy to apply for and well organised by Denise Thornhill, Executive Officer, of the Clinical School. When we arrived tired and jet lagged we were relieved to be met by Denise who was welcoming and enthusiastic.

We were both able to do our first



*Hannah Reid and Christine Wong (Newcastle, UK) with other UK & European students enjoying their elective at Nepean Campus*

choice of specialities, 4 weeks in Emergency medicine and 4 weeks in Paediatrics, as well as benefit from the inexpensive on-site accommodation. In Emergency we had opportunities to get lots of hands-on experience, practicing suturing and putting in cannulas, especially. In Paediatrics we were able to improve our history taking skills, gain more knowledge about paediatric conditions and practice baby checks. Our placements

offered a good balance of flexibility to achieve our university learning outcomes and regular structured teaching for interns and medical students that ran almost every day. Both departments provided a fantastic learning environment due to the friendly clinical team. Denise and her staff ensured all was running smoothly for us and that we were making the most of our time at the hospital and in Australia.

We would wholeheartedly recommend doing a medical elective at Nepean Hospital to anyone interested in spending time in Australia. We were able to achieve all our learning outcomes as well as having a truly enjoyable and unforgettable time. A big "thank you" to all involved!

## "Peter Dunlop Memorial Occupational Health and Safety Award"



Our Research Support Officer, Susan Dowd, was among ten University Employees to be nominated for the "Peter Dunlop Memorial Occupational Health and Safety Award" 2008.

Our Clinical School falls under the SWAHS Occupational Health and Safety Jurisdiction and as such our Research was audited in August this year. This was the first time we had

prepared for an audit and achieved the high score of 72.78%. This was only possible in the short timeframe in which we had to work, due to the great co-operation and teamwork from the Nepean Clinical School personnel.

## Certificate of Recognition of Service Award

Our Executive Officer, Ms. Denise Thornhill recently received a "Certificate of Recognition of Service Award" for 15 years of service with the hospital.

Denise was appointed to the Nepean Clinical School, University of Sydney in 1991 as the inaugural Administrative Manager and has been an integral member of the School ever since.



# Nepean Medical Research Foundation's Thankyou Dinner for the Nepean Philanthropists



*The Great Hall*

The Nepean Medical Research Foundation's annual Nepean Philanthropist dinner was held at the Great Hall, University of Sydney where Her Excellency Professor Marie Bashir, AC CVO, Governor of NSW was welcomed as the Foundation's patron by the President Mrs Gwen McMaster-Fay. The Governor, along with local Patron the Mayor of Penrith City Council, Jim Aitken OAM, University of Sydney dignitaries, Nepean Philanthropists and local business people shared an evening of speeches by Her Excellency, the Governor, the Vice Chancellor of the University of Sydney Dr Michael Spence and the Sub Dean of Research at Nepean Clinical School Prof Ralph Nanan. The importance of knowledge transfer from research into health care was stressed by all, not just a challenge in our local community but a challenge faced globally throughout the world.

The evening acknowledged the late Founder of the Nepean Medical Research Foundation, the late Prof Sirus Naraqj whose wife Mitra and family were in attendance. The Foundation was formed in 2000 and has now distributed in excess of half a million dollars for clinical research and laboratory equipment.

Two local musicians from the Dame Joan Sutherland Conservatorium pianist Dominique Anderson and tenor Nicholas Gentile performed at the Great Hall much to the delight of all in attendance, especially Her Excellency, the Governor.



*David Calrow (Artist - donated painting), Mrs Gwen McMaster-Fay (President NMRF), Her Excellency Professor Marie Bashir and Jeanine Calrow.*

A painting by artist David Calrow was donated to the Nepean Medical Research Foundation for presentation to the Governor as Patron of the Foundation. The original water colour was of a Waratah, the State Symbol of NSW and Her Excellency was so taken by the painting she is to hang it in Government House.

The Nepean Philanthropists continue to grow in numbers and these generous donors who have made a commitment to the Foundation for five years were thanked for their generosity, good will and vision

into our local community and to furthering the development of medical and health research. This is achieved locally at the University of Sydney's, Nepean Clinical School but there is a continuing need to support community understanding and appreciation of the benefits of a strong and robust research sector in Australia and multi site networks throughout the world.

For more information please visit the Foundations website on [www.nepeanmrf.com.au](http://www.nepeanmrf.com.au)



*Prof. Ralph Nanan presenting how our research has benefitted*



*Gwen McMaster-Fay (President NMRF), John Bateman (Vice President NMRF) and Her Excellency Professor Marie Bashir*



*The Nepean Philanthropists with Her Excellency Professor Marie Bashir*

# Nine and Dine

By **STACEY HICKS**

LOCAL residents are being encouraged to enjoy a day on the green for a worthy cause next month, when the Australian Women and Children's Research Foundation (OZWAC) holds its 'Nine and Dine' Charity Golf Day.

The locally based charity raises much needed funds for research into the improvement of the health of mothers and their babies, with particular focus on premature births, high-risk pregnancies and stem cell research in western Sydney.

Chairman of OZWAC, Bruce Williams, said the charity has taken a different approach this year to help raise money.

"The concept for this golf day is quite unusual, because normally you just play nine holes, but the Nine and Dine event will give people the opportunity to come along and play a game of golf, and then finish off the evening with dinner and entertainment," Mr Williams said.

"This gives the non-playing partners of the golfers an opportunity to come along and be involved as well and they can just come to the dinner at the end of the day if they wish."

Golf on the day will be played in Ambrose teams of four men, women or mixed teams and each team will play from the best ball. Participants are invited to play nine holes, with tee off at 4pm.

More serious golfers can take part in an 18-hole competition with tee off at 1.30pm, followed by dinner and entertainment.

Associate Dean of Nepean Clinical School and Board Member of OZWAC, Professor Michael Peek, said the funds raised would make a significant difference to

research into neonatal care.

"The people of Penrith have always been so supportive of OZWAC and the money raised in the past has helped fund numerous research projects such as a study on the effects of high blood pressure on pregnancy, as well as provided an ultrasound machine to help predict whether mothers will need to deliver by caesarean section," Professor Peek said.

"The funds also helped set up the Nepean Centre for Perinatal Care, which is run by the University of Sydney and includes workshops for doctors, midwives and health care professionals to provide education on various aspects of perinatal care.

"It is often difficult to get funding for research projects so this money will definitely be put to good use."

The Nine and Dine Charity Golf Day event will be held on Friday, November 7, at the Emu Sports Club, Leonay Golf Course. Entry costs \$70 per person for the nine-hole course and dinner, \$85 per person for the 18-hole course and dinner and \$55 for dinner only. For more information or to fill in a booking form, visit [www.ozwac.com.au](http://www.ozwac.com.au).

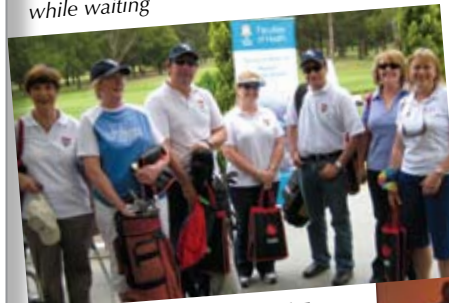


OZWAC Administration Assistant, Maree Yabsley, Associate Dean of Nepean Clinical School, Professor Michael Peek, and Emu Sports Club CEO, Michael Ekert, are encouraging locals to attend OZWAC's Charity Golf Day. **Photo: PETER VEITH.**



Michael still working while waiting

Lea Hicks, Maree Yabsley, Dianne Courtman, Bruce Williams



The Nepean Clinical School Team



Our winning "mixed" team Michael Peek, Ralph Nanan and Sarah Whereat with Tara Dennis



"Revival" playing for us

Courtesy of The Western Weekender



Australian Women & Children's Research Foundation

[www.ozwac.com.au](http://www.ozwac.com.au)

Would like to say a very big **THANKYOU** to all of our sponsors and supporters who helped to make our "9& Dine Charity Golf Day" on 7 November 08 such a great success. And thankyou to all those who attended on the day and helped us raise more than \$11,000 towards vital research in the area of Women & Children's health.

## 2008 GOLF DAY SPONSORS and SUPPORTERS

Berger Piepers  
Bell Lawyers  
Macquarie Bank  
Nepean Clinical School  
Awe-Sim Electrical

Bank of Queensland  
Hix Group  
Hitchens Removals  
Upstream Print Solutions  
NAB

Stanton & Taylor Real Estate  
Stanton & Taylor Strata Management  
Kick FM  
Quick-En-Kleen  
JLW Interiors

### Major Sponsor

**Williams Courtman Kelly**  
Chartered Accountants

Hopewood Health Retreat  
The Good Guys Penrith

Penrith Whitewater Stadium  
The Complete Basketcase

Tony & Lynne Cremona/Prompt Mower Service  
Nepean Belle

### Band - "Revival" for their great entertainment

Venue- Emu Sports Club

Don't forget to mark your diary NOW for the OZWAC Annual Charity Ball Saturday 4 April 2009 at Panthers Pavilion!!



# NEWS

The University of Sydney

Australia

Nepean Clinical School

## New Faces:

Miss Linda Bourne - Clinical School  
Ms Li Wei - Geriatric Medicine  
Mr Tom McCorquodale - Endocrinology  
Beth Bendell - Womens and Childrens Health  
Dr Anna Virginia Franco - Visiting Fellow Obstetrics/gynaecology

## Clinical Academic Titles Awarded:

Professor Hans Peter Dietz

## Completed Degrees:

Daniel Bragg - PhD  
Will Kovacevic - Honours

## Departures:

Marilyn Reed

## Contact for The Nepean Clinical School Newsletter:

Ms. Susan Dowd  
Research Support Officer  
University of Sydney, Nepean Clinical School  
Level 5, South Block, Nepean Hospital  
Kingswood NSW 2747  
Ph.: (02) 4734 2682  
Fax: (02)4734 1817  
Email: [sdowd@med.usyd.edu.au](mailto:sdowd@med.usyd.edu.au)

## Contact for The Nepean Medical Research Foundation:

Lydia Fuhrmann  
Manager - NMRF  
PO Box 82  
EMU PLAINS NSW 2750  
Tel: (02)4735 2407  
Fax: (02)4735 4911  
Email: [NMRF@westnet.com.au](mailto:NMRF@westnet.com.au)

## Contact for OZWAC and the Nepean Centre for Perinatal Care (NCPC):

Maree Yabsley  
Admin Officer  
NCPC & OZWAC  
L5 South Block  
Nepean Hospital  
Kingswood 2747  
Ph 4734 3205  
Email: [mareey@med.usyd.edu.au](mailto:mareey@med.usyd.edu.au)