

PROFESSIONAL RECOGNITION

- This degree program provides comprehensive and advanced education on the basic and applied sciences relating to all types of pain. This has obvious relevance to specialty training examinations and CPD.
- It is endorsed by the International Association for the Study of Pain (IASP), the leading international body for the study of pain. This is a testament to the programs high quality.

ADMISSION REQUIREMENTS

- Bachelor's degree in a health discipline
- Evidence of academic or professional qualifications considered by the faculty to be sufficient preparation to pursue the course of study.

ENGLISH LANGUAGE REQUIREMENTS

If English is not your first language, you MUST demonstrate English language proficiency before admission can be confirmed. Details about these requirements are located on the faculty website:
sydney.edu.au/medicine/futurestudent/postgrad/coursework

COURSE FEES

| AWARD | LOCAL | INTERNATIONAL |
|----------------------|------------|---------------|
| Single unit of study | \$3,437.50 | \$5,375 |
| Graduate Certificate | \$13,750 | \$21,500 |
| Graduate Diploma | \$20,625 | \$33,250 |
| Masters | \$27,500 | \$43,000 |

Fees quoted are for tuition costs only and are applicable in 2016. The University's tuition fees are reviewed annually and may be varied during the period of study.

For more information: sydney.edu.au/medicine/pmri/education

For further information

Pain Management Research Institute
Level 2, Douglas Building
Royal North Shore Hospital
St Leonards, NSW 2065, Australia

T: +61 2 9463 1516

E: paineducation.admin@sydney.edu.au

W: sydney.edu.au/medicine/pmri



ABOUT THE INSTITUTE

The Pain Management Research Institute consists of a multidisciplinary group of health professionals and research staff who are collaborating to improve pain treatment, education, and research in adults and children. Staff include:

- Medical specialists in pain medicine, psychiatry, rheumatology, palliative care and orofacial medicine;
- Registered nurses;
- Clinical psychologists;
- Physiotherapists; and
- Basic and applied scientists.

Clinical treatment, teaching and research activities extend from acute pain (e.g. post operative and trauma) to chronic non cancer pain (e.g. low back pain, post amputation pain, herpes) and cancer pain management.

The Institute facilitates an articulated online Masters program in Pain Management, in association with The University of Sydney. Individuals can access single units of study from this program for continuing education purposes.



PAIN MANAGEMENT
POSTGRADUATE
STUDIES 2016

SYDNEY MEDICAL SCHOOL



WHY STUDY WITH US?

- Our program offers advanced, evidence-based and clinically relevant education in pain management
- Our diverse teaching facility and student group provides you with an opportunity to learn with, from and about other health professionals managing pain patients
- Build your competence and confidence in the assessment and management of a diverse range of pain problems
- For medical graduates it is an ideal step in preparation for specialist training in Anaesthetics, Pain Medicine, Critical Care, General Practice, Rheumatology and other medical fields managing patients in pain
- For other health graduates it is an ideal career pathway towards becoming an expert in pain and/or a leader in your professional field
- As an enrolled student you can access reduced registration to an optional two week face-to-face workshop at the beginning of each year which provides a comprehensive introduction to the course content and gives you an opportunity to meet pain experts

KEY FEATURES OF OUR PROGRAM

- Our program is delivered totally online which means you can fit your study around other work and family commitments
- The learning activities allow you to explore the science, concepts, approaches and procedures relevant to pain management in an interactive multidisciplinary team context
- Our units of study are developed and facilitated by national and international academic clinicians and researchers. All are widely experienced in pain management and viewed as experts in their field
- A biopsychosocial focus and the multidisciplinary team are core concepts that traverse all units of study.
- The program structure, with the 4 core units that comprise the Graduate Certificate, equips you with a firm foundation in the key concepts and principles underlying the mechanisms and management of pain
- The range of elective choices provides you with an opportunity to study specific areas of interest in more depth

UNITS OF STUDY

| Core Units | Credit Points |
|---|---------------|
| • Introduction to Pain Management | 6 |
| • Pain Mechanisms and Contributors | 6 |
| • Principles of Pain Treatment & Management | 6 |
| • Pain Conditions | 6 |
| • Issues, Controversies in Pain Management (Masters level only) | 6 |

| Elective Units (Semester 1) | Credit Points |
|--|---------------|
| • Acute Pain | 6 |
| • Clinical Aspects of Neurobiology | 6 |
| • Complementary Therapies: Pain Management | 6 |
| • Musculoskeletal Pain | 6 |
| • Pharmacology of Pain | 6 |
| • Psychology of Pain | 6 |

| Elective Units (Semester 2) | Credit Points |
|---|---------------|
| • Pain in the Elderly | 6 |
| • Pain in Children | 6 |
| • Cancer Pain | 6 |
| • Psychological Approaches in Pain Management | 6 |
| • Disability and Pain Rehabilitation | 6 |
| • Orofacial Pain | 6 |

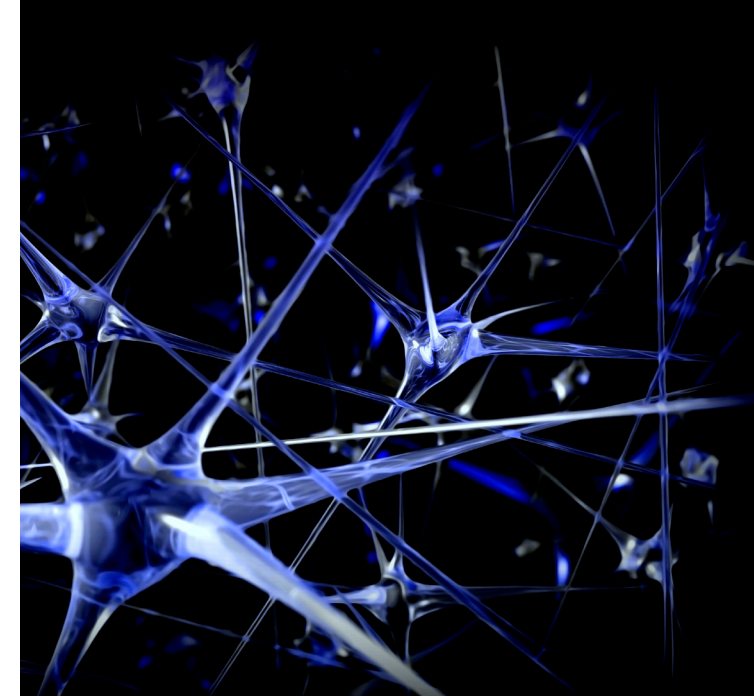
STUDENT TESTIMONIALS

"I would recommend [the program] to others without hesitation. Day-to-day working as an anaesthetist and a pain specialist I see a broad range of problems that the course has given me skills to deal with"

"All health professionals will find this course extremely valuable. I'd recommend it to anybody. it's helped me a huge amount in what I do"

"I know that my patients get a lot of support and help from me in what I do everyday ... [The program has] actually made me more effective in what I do by having a broader set of skills"

"The online learning experience is one that is very easy. Working through a training program requires lots of commitment ... and I found the ability to come home in between difficult shift rosters and then continue my education of paramount importance"



REQUIREMENTS AT EACH LEVEL OF AWARD

