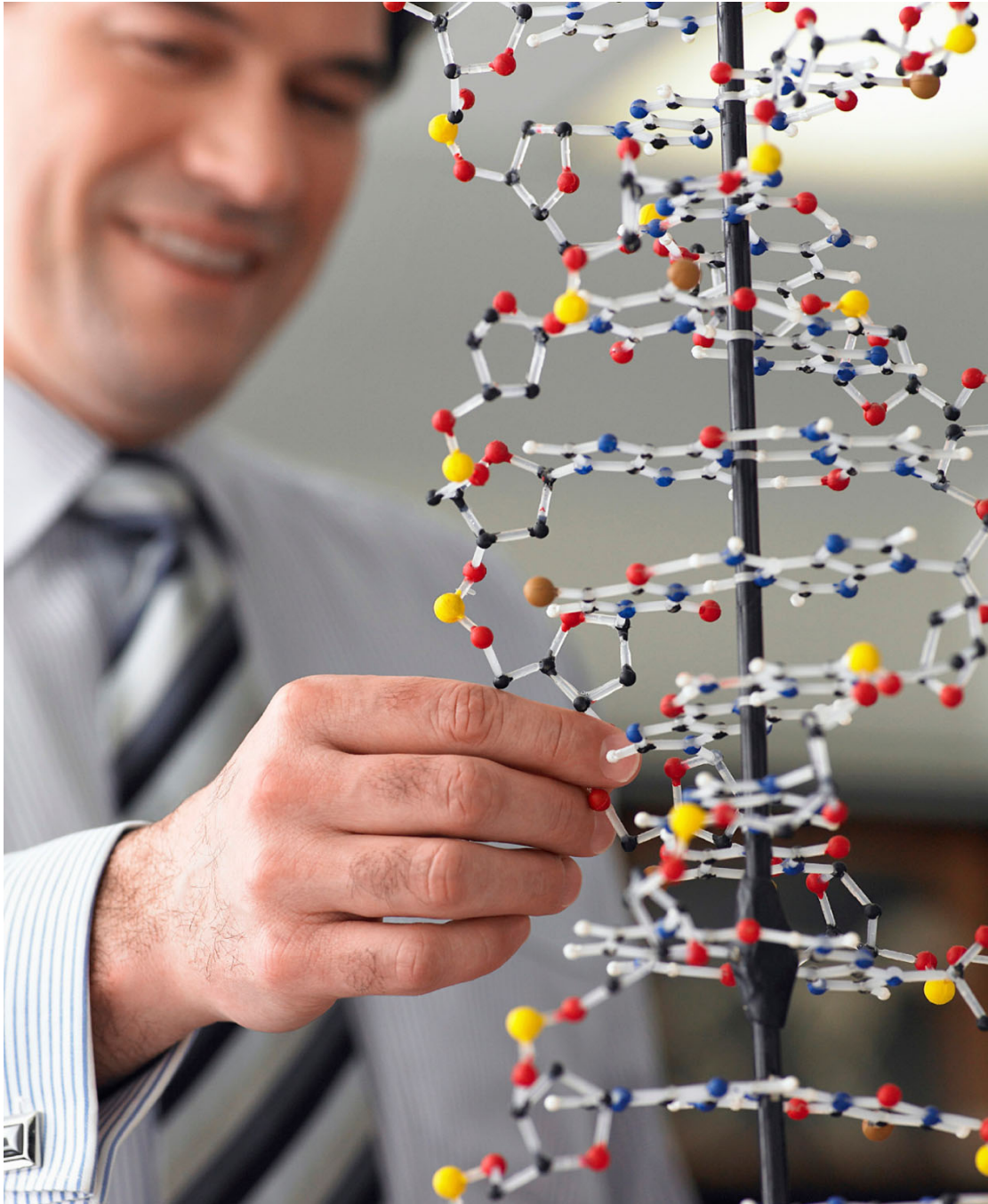


DOCTOR OF MEDICINE & DOCTOR OF DENTAL MEDICINE
INTERNATIONAL ADMISSIONS GUIDE 2018
(SECOND EDITION, REVISED)

FOR INTERNATIONAL APPLICANTS ONLY



INTRODUCTION

Welcome to the *International Admissions Guide 2018* for international applicants for the Doctor of Medicine (MD) and the Doctor of Dental Medicine (DMD) at the University of Sydney.

Applying for medicine or dentistry is a complicated process, and the aim of this Guide is to answer the most common questions about the admissions criteria and how to apply.

It will help you determine whether you have met the criteria to submit an application for admission to the MD or DMD. It also provides a step-by-step guide to completing the application form, submitting documents and meeting the timelines.

If, after reading this information, you have any questions, please feel free to contact us via the Contact Us page at the end of this Guide.

Thank you for considering the MD and the DMD at the University of Sydney and best wishes for your application.

CHANGES IN THIS SECOND EDITION (REVISED) GUIDE (13TH JUNE 2017):

On page 14, for 2018 entry, the US Dental Admissions Test (DAT) and the Canadian Dental Aptitude Test (CDAT) results must be obtained no earlier than 1 February 2015. Applicants who wish to submit DAT or CDAT results must upload a scanned copy of the test results to your submitted application using the 'UPLOAD DOCUMENT' function in Sydney Student by 27 June 2017 AND mail the original hard-copy test results which must be received by the University Admissions Office by 25 July 2017.

IMPORTANT NOTE

The University regularly review the admission criteria and application processes for its courses. It reserves the right to change these criteria and processes without notice. Statements in this Guide provide general advice about the currently applicable criteria and processes, and may not be correct for future application periods. It is possible that GPA scores will, in the future, be incorporated into the ranking of applicants for entry into the MD and DMD. It is also possible that the GPA requirement will be increased. Applicants are advised to consult the relevant websites for the most recent information:

<http://sydney.edu.au/medicine/study/md/index.php> and
<http://sydney.edu.au/dentistry/study/dentistry/index.php>.

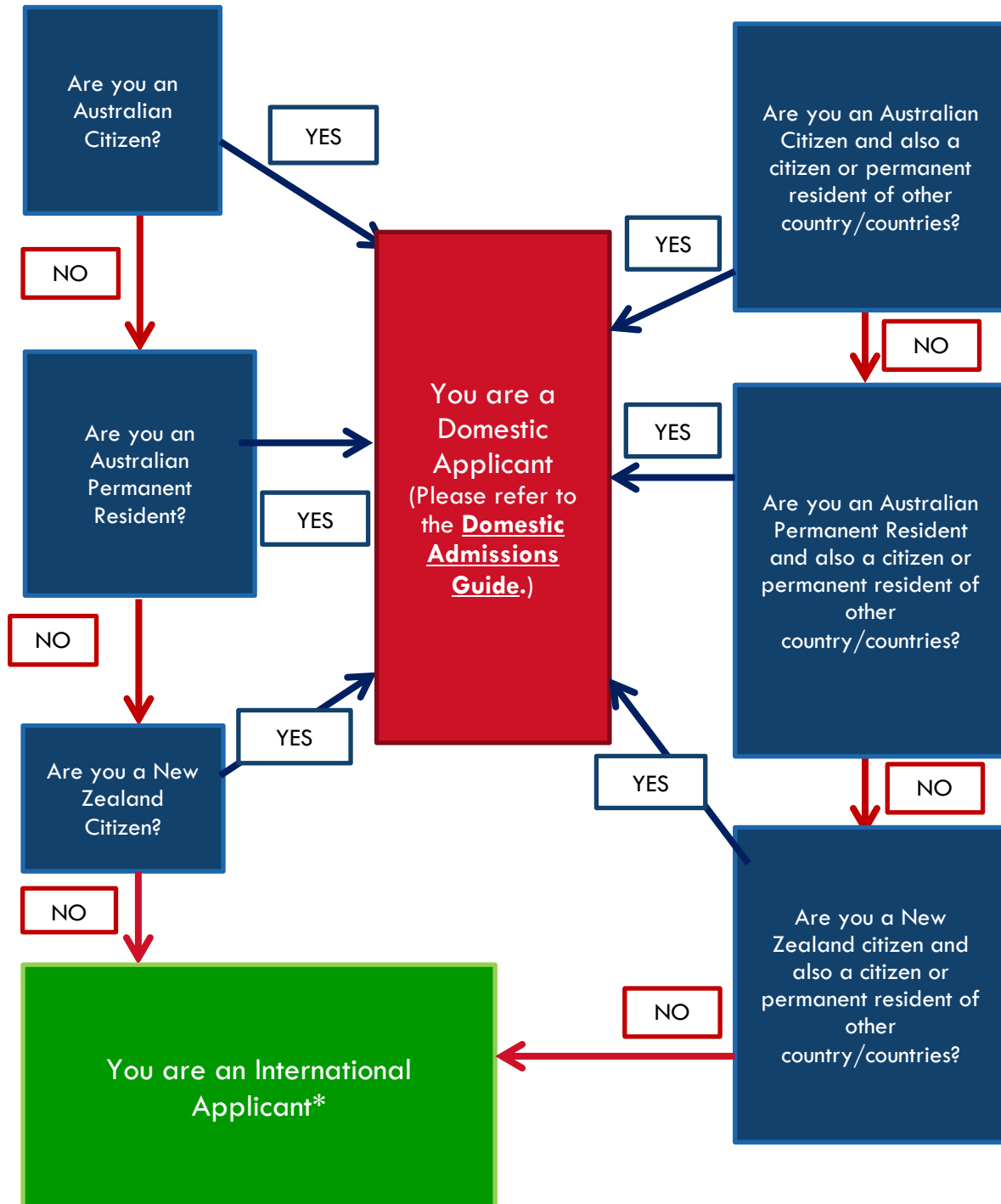
Please read and follow the instructions in this Guide carefully. All prospective students of medicine and dentistry are expected to be able to follow instructions.

If you miss a step in the application process or fail to complete a step correctly, your application might not be eligible for consideration.

CONTENTS

2	INTRODUCTION
3	CONTENTS
4	ARE YOU AN INTERNATIONAL APPLICANT?
5	OVERVIEW
5	Selection criteria
6	Admissions steps for international applicants
6	TIMELINE
6	PLACES, FEES AND SCHOLARSHIPS
7	SELECTION CRITERIA
7	Your bachelor's degree
10	GPA and admissions test results
11	Calculating Grade Point Average (GPA)
11	– Calculating GPA
11	– Meeting the GPA requirements
11	– General Guidelines
12	– Official results assumed to take account of illness or misadventure
13	Biology pre-requisite (DMD only)
13	Admissions test results
13	– GAMSAT
14	– MCAT
14	– DAT and CDAT
14	– Medicine applicants: US citizens/nationals/permanent residents ONLY
14	– US Federal Student Aid
15	English language requirement
16	Invitation to interview and confirmation page
16	– Interview process
17	– The interviewers
17	– Additional interview
17	– Special consideration
18	OFFERS
18	Deferral
18	No exemptions and advanced standing
19	Appeals
19	IMPERMISSIBLE CONDUCT
19	REQUIREMENTS FOR MD AND DMD STUDENTS
20	POST-OFFER REQUIREMENTS
20	NSW Ministry of Health compliance checking
20	NSW Working with Children Check
20	First aid training
21	HOW DO YOU APPLY?
22	Supplementary form
23	Application checklist
25	How to use the online application form
25	– Before you begin
25	– Document submission guidelines
26	– The online application form
26	– Pages in the online application form
30	– Submitting your application
31	CONTACT US

ARE YOU AN INTERNATIONAL APPLICANT?



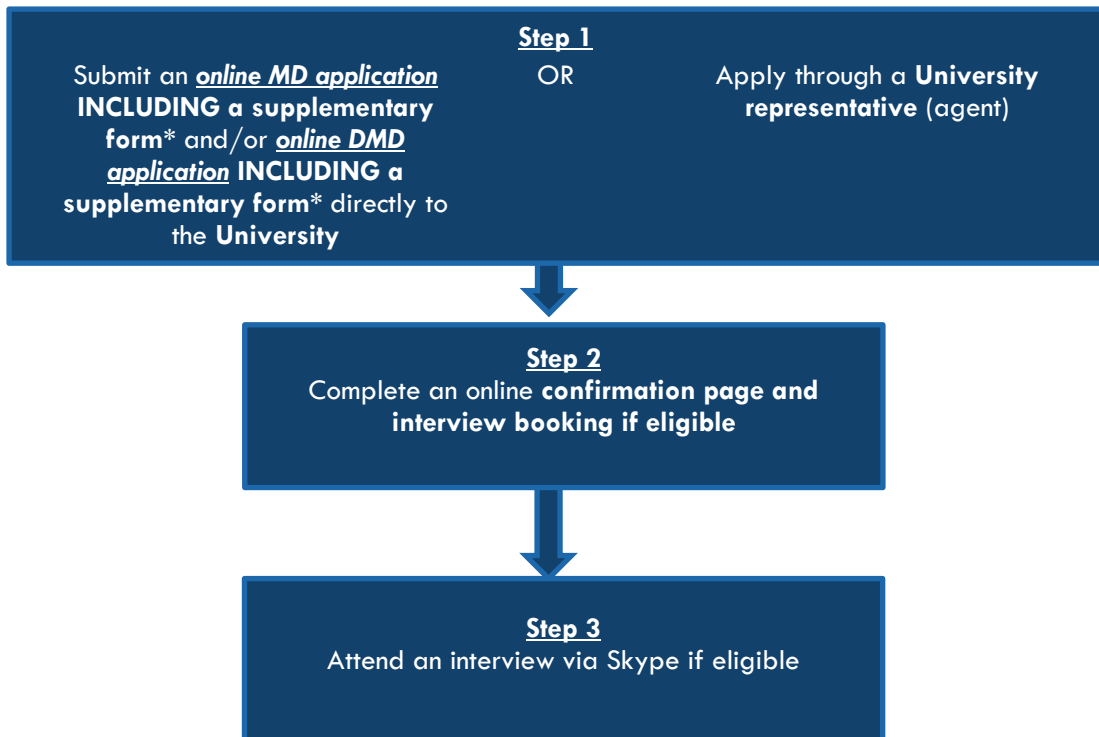
*Note: Please refer to clause 39 of the University's [Coursework Policy 2014](#) and <http://sydney.edu.au/medicine/study/md/admission/other-information.php#change> (for MD) or <http://sydney.edu.au/dentistry/study/dentistry/index.php> (for DMD) for information for applicants changing from international to domestic status.

OVERVIEW

SELECTION CRITERIA

You must fulfil three main requirements to be eligible for admission:	
1. Satisfactory performance in an eligible bachelor's degree (indicated by GPA)	<ul style="list-style-type: none"> - International applicants must have completed, or be in the final year of, a bachelor's degree and have at least a credit average at the time of application, as indicated by Grade Point Average (GPA). - International applicants will have their bachelor's degree assessed and GPA calculated by the University.
2. Satisfactory performance in an admissions test (GAMSAT/MCAT or for DMD, DAT/CDAT)	<ul style="list-style-type: none"> - Applicants must submit valid results from an admissions test with their application. - International applicants must submit either Graduate Australian Medical School Admissions Test (GAMSAT) or Medical College Admission Test (MCAT) results. International DMD applicants may alternatively submit US Dental Admissions Test (DAT) or Canadian Dental Aptitude Test (CDAT) results.
3. Satisfactory performance in an interview	International applicants who meet both the required GPA and admissions test results will be invited to attend an interview.
You must also fulfil additional requirements, if applicable, to be eligible for admission:	
1. English language requirements	<ul style="list-style-type: none"> - All applicants must meet this requirement.
2. MCAT results (MD only)	<ul style="list-style-type: none"> - MD applicants who are US citizens/nationals/permanent residents (regardless of whether they are also a citizen or permanent resident of a country other than the US) must submit valid MCAT results.
3. Biology pre-requisite (DMD only)	<ul style="list-style-type: none"> - DMD applicants must meet this requirement.

ADMISSIONS STEPS FOR INTERNATIONAL APPLICANTS



* Please refer to the 'HOW DO YOU APPLY?' section (pages 21-22) for details.

TIMELINE

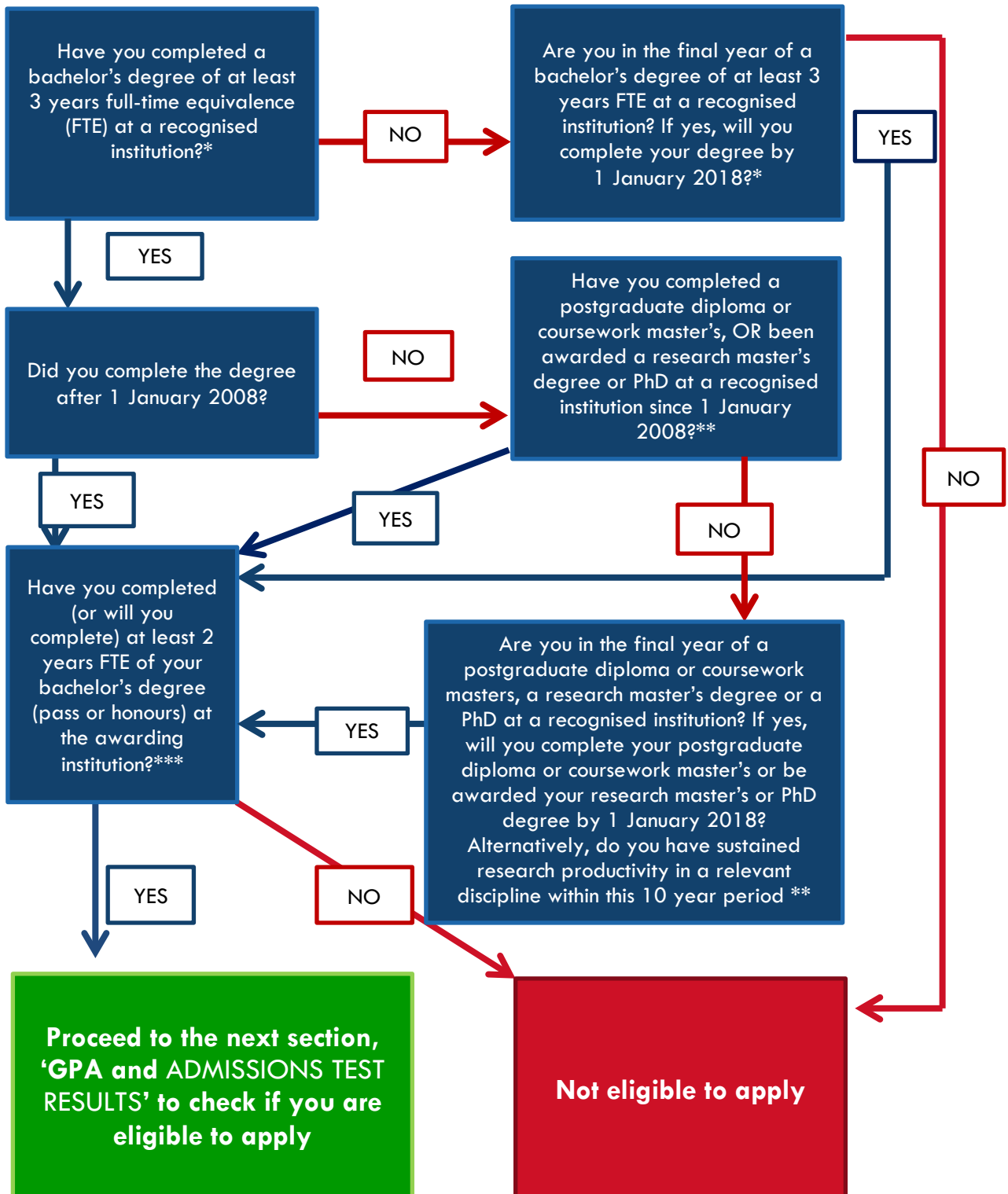
Please refer to the timeline at <http://sydney.edu.au/medicine/study/md/admission/dates.php> and remember that dates are subject to change.

PLACES, FEES AND SCHOLARSHIPS

Please refer to the website at <http://sydney.edu.au/medicine/study/md/fees-places-scholarships.php> (for MD) or <http://sydney.edu.au/dentistry/study/dentistry/index.php> (for DMD) and remember that the information is subject to change.

SELECTION CRITERIA

YOUR BACHELOR'S DEGREE



*Your degree must be either:

- a) a bachelor's degree (pass) accredited at Level 7 under the [Australian Qualifications Framework](#) or a bachelor's degree (with honours) accredited at Level 8 under the [Australian Qualifications Framework](#), from [an Australian university or self-accrediting higher education institution](#); or
- b) a bachelor's degree from an overseas university listed in the [National Office of Overseas Skills Recognition Guide](#), provided that the degree is equivalent to an Australian bachelor degree (pass or with honours).

You must complete your bachelor's degree by 1 January of the year in which you intend to commence the MD or DMD. (Note: This policy also applies to applicants who are enrolled in an accelerated program.)

Your bachelor's degree must be of at least 3 years full-time equivalence (FTE).

** If your bachelor's degree was completed more than 10 years before 1 January of the year for which you are seeking enrolment, you must, in addition:

- (1) have completed within this 10 year period, a postgraduate degree or postgraduate diploma (or equivalent); or
- (2) complete prior to 1 January of the year in which you intend to enrol in the MD or DMD, a postgraduate degree or postgraduate diploma (or equivalent); or
- (3) have been awarded within this 10 year period, a postgraduate research degree (or equivalent); or
- (4) be awarded prior to 1 January of the year in which you intend to commence the MD or DMD, a postgraduate research degree (or equivalent); or
- (5) have demonstrated to the satisfaction of the Dean sustained research productivity in a relevant discipline within this 10 year period.

For the purposes of paragraphs (1) to (4) above, a postgraduate diploma or degree (or equivalent) means:

- a) a postgraduate degree or postgraduate diploma accredited at Level 8, 9, or 10 under the [Australian Qualifications Framework](#), from [an Australian university or self-accrediting higher education institution](#); or
- b) an overseas university listed in the [National Office of Overseas Skills Recognition Guide](#), provided that the postgraduate degree or postgraduate diploma is equivalent to an Australian postgraduate degree or diploma.

*** You must complete at least 2 years FTE of your bachelor's degree (pass or honours) at the awarding institution.

NOTE:

1) Applicants who have not completed or will not complete an eligible bachelor's degree by 1 January 2018 (regardless of whether they have completed/will complete a postgraduate coursework diploma or degree, or have been awarded/will be awarded a postgraduate research degree by 1 January 2018) are ineligible to apply.

2) Applicants for the MD who have previously been excluded or involuntarily suspended from a course at a tertiary education institution must indicate this on their application form and submit documentation detailing the circumstances of the exclusion or involuntarily suspension. Should these applicants be eligible for interview, they will be required to attend an additional interview as part of the Multiple Mini Interview (MMI) process.

3) Applicants for the MD who have been enrolled or currently hold a deferred or suspended place in a medical program at any higher education institution must indicate this and provide the reason(s) for discontinuation or deferral or suspension on their application form, and upload the relevant academic transcript or documentation.

Should these applicants be eligible for interview, they will be required to attend an additional interview as part of the Multiple Mini Interview (MMI) process. Sydney Medical School will take into account an applicant's previous record in a medical program when deciding whether to make an offer of admission to the MD.

4) Applicants for the DMD who have been enrolled or currently hold a deferred or suspended place in a dental program at any higher education institution must indicate this and provide the reason(s) for discontinuation or deferral or suspension on their application form, and upload the relevant academic transcript or documentation.

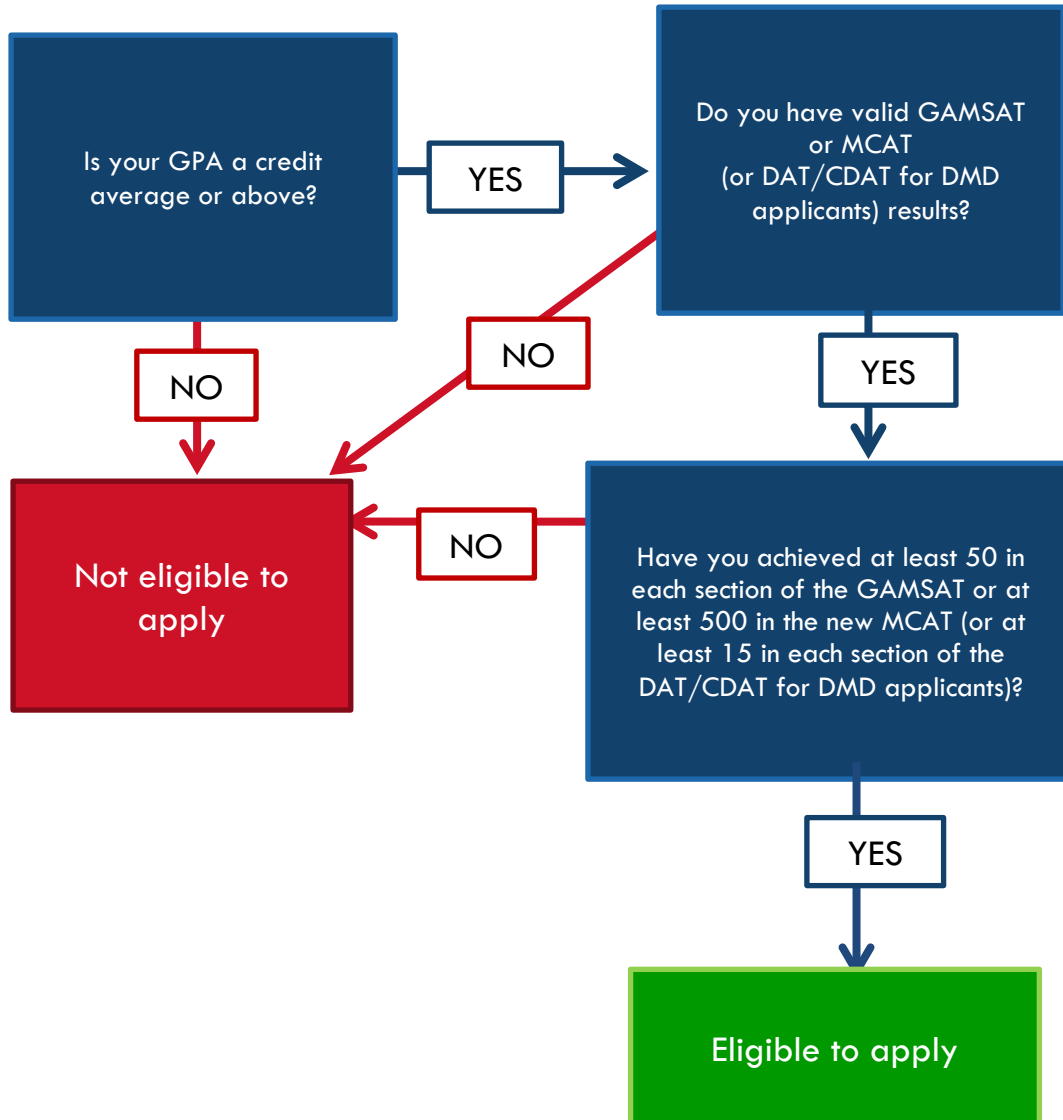
Should these applicants be eligible for interview, they will be required to attend an additional interview as part of the Multiple Mini Interview (MMI) process. The Faculty of Dentistry will take into account an applicant's previous record in a dental program when deciding whether to make an offer of admission to the DMD.

5) Applicants whose registration in any profession, in Australia or overseas, has been suspended or cancelled or made subject to conditions/undertakings/limitations OR who have been disqualified from applying for registration for, or been the subject of conduct, performance or health proceedings in any profession in Australia or overseas must indicate this on the supplementary form for the MD and DMD.

Should these applicants be eligible for interview, they will be required to attend an additional interview as part of the MMI. Sydney Medical School and the Faculty of Dentistry will take into account relevant records when deciding whether to make an offer of admission to the MD or DMD program.

6) Any applicant for the MD or DMD who has previously been offered and accepted a place in that program at the University of Sydney and has failed to enrol, or having enrolled, subsequently withdrew from or discontinued that program without prior approval, is deemed to be ineligible for admission to the MD or DMD for a period of two years.

GPA AND ADMISSIONS TEST RESULTS



CALCULATING GRADE POINT AVERAGE

CALCULATING GPA

As an international applicant, your GPA will be calculated by the University. You do not need to have your qualifications assessed by the Universities Admission Centre (UAC). You must provide your official transcripts with your online application.

MEETING THE GPA ENTRY REQUIREMENTS

Applicants must have a minimum GPA of 5 at the time of application to be considered (for example, a GPA of 5 out of 7, where 7 represents a 'High Distinction' on a 7-point numeric scale). Applicants with overseas qualifications are required to achieve an equivalent academic level (for example, a GPA of 2.7 out of 4 for USA/Canada universities, a GPA of 3.3 out of 5 for Singapore universities, a bachelor's degree at a Lower II class for UK universities).

If your bachelor's degree was completed more than 10 years before 1 January of the year for which you are seeking enrolment, and you have met or will meet the additional postgraduate study requirement specified in the "Your bachelor's degree" section of this Guide, your GPA will still be calculated from your bachelor's degree results.

GENERAL GUIDELINES

1. The GPA is calculated over the entire duration of the bachelor's degree (pass or honours).
2. The unit values or credit points of each subject must be used. If this information is not available, a value of 1 will be assigned.
3. All years of study, regardless of level, are weighted equally.
4. All failed subjects will be included in the calculation with a mark of zero (0). If a subject appears on your transcript as 'withdrawn' or 'discontinued', i.e. a subject in which you were enrolled but did not complete, it will only be included in the GPA calculations if 'Withdraw/Fail' or 'Discontinue/Fail' is shown. These subjects will also be assigned a zero (0) and no percentage marks can be used.
5. If a subject has been failed and repeated, both marks will be included in the GPA calculation.
6. The calculation is based on subjects completed at the time of application. For example, for applicants who are applying whilst in the final year of their degree, first semester results will be included in the assessment only if those results are recorded on the transcripts at the time of application. It should be noted that any offer of a place is conditional upon the applicant completing his/her degree at the required level of performance by 1 January 2018.
7. Bachelor's degree Honours years

Research Honours years are included in the GPA calculation for applicants who have undertaken an additional honours year at the institution at which their bachelor's degree was awarded OR at an institution other than the institution at which their bachelor's degree was awarded.

For the purposes of the GPA calculation, grades given to honours years that are otherwise ungraded are as follows:

Award	Grade
First Class (1)	7
Second Class, First Division (2.1)	6
Second Class, Second Division (2.2)	5
Third Class (3)	4

It is important to note that any grades for units of study completed in an honours year will **not** be overwritten with a higher grade based on the honours level achieved. This will only occur for those components, if any, which are reported as ungraded. See [Examples](#) for clarification.

Note: The GPA for applicants whose bachelor's degree was awarded with integrated Honours will be calculated on the basis of the applicant's academic results in the bachelor's degree, not by reference to the table above. See [Examples](#) for clarification.

8. Combined bachelor's degree program

For applicants who have undertaken a combined bachelor's degree program, all units of study undertaken in that program will be used in the calculation of a GPA regardless of whether or not one component of the degree has been abandoned, completed or conferred/awarded.

A single degree completed as part of a combined degree will not be considered separately for the calculation of the GPA under any circumstances.

For example, in the event that your GPA does not meet the minimum requirement when taking into consideration all subjects completed for your combined degree, it is NOT possible to group subjects according to which degree they were associated with.

9. Credit transfer

Credit transfer subjects are included in the calculation only if:

- it is clear from the transcript that they have, or will, contribute to the award of the degree
- results for the studies on which the credits are based are available
- it is clear which subjects previously studied were used for credit.

10. Pass/Fail basis ungraded subjects

Subjects that are awarded on a Pass/Fail basis will only be included in the calculation when they represent more than 50% of the subjects included on the transcript. A numeric value of 4 will be assigned to those subjects.

Note: From 2017, master's degree by coursework will no longer be included in the calculation of the GPA.

OFFICIAL RESULTS ASSUMED TO TAKE ACCOUNT OF ILLNESS OR MISADVENTURE

The official results listed on an applicant's transcript, and his or her admission test results, will be taken as the awarding and testing authorities' assessment of the academic standards reached by the applicant, taking due account of illness and misadventure according to the authorities' policies.

BIOLOGY PRE-REQUISITE (DMD only)

All DMD applicants are required to meet a biology pre-requisite by the time of application. Please refer to <http://sydney.edu.au/dentistry/study/dentistry/biology-prerequisite.php> for details.

ADMISSIONS TEST RESULTS (GAMSAT, MCAT, DAT, CDAT)

All applicants must submit valid admissions test results with their application.

International applicants to MD: GAMSAT or MCAT

International applicants to DMD: GAMSAT or MCAT or DAT or CDAT

GAMSAT

Applicants must have achieved a minimum score of 50 in each section of the GAMSAT to be considered.

For the purpose of admission to the MD or DMD, a new GAMSAT calculation formula is being introduced in 2017 for 2018 entry:

The average GAMSAT score will replace the Overall GAMSAT Score.

Average GAMSAT score = (1 x Section I + 1 x Section II + 1 x Section III) ÷ 3

Section I: Reasoning in Humanities and Social Sciences

Section II: Written Communication

Section III: Reasoning in Biological and Physical Sciences

The University will continue to collect information on overall GAMSAT scores on the online application form, for the purpose of de-identified analysis and review only. Overall GAMSAT scores will play no role in the assessment of applications for admission in 2018. The average GAMSAT score will be collected on a supplementary form. You will be required to download, complete and upload a supplementary form to your online application through Sydney Student as part of your application. Please refer to the 'HOW DO YOU APPLY?' section (pages 21-22) for details.

Please note that GAMSAT results are valid for two years. If you have more than one set of valid results, you may nominate which year's results you want considered. Individual section scores from tests in different years cannot be mixed.

To apply in 2017 for the MD and/or DMD commencing in 2018, ONLY the following GAMSAT results can be used: September 2015, March 2016, September 2016, and March 2017.

Please DO NOT contact the University for information on the likely average GAMSAT cut-offs for an interview. The average GAMSAT cut-offs will be determined and published on Sydney Medical School's website once they are available in July/August.

Please DO NOT contact the University for former cut-offs of overall GAMSAT scores, which are irrelevant to the new admission cycle and will not be provided.

Applications, information and sample questions for GAMSAT are available on the Australian Council for Educational Research (ACER) website at <http://www.gamsat.acer.edu.au/>.

MCAT

The Medical Colleges Admissions Test (MCAT) is held in a number of international locations. If you have more than one set of valid results, you may nominate which year's results you want considered. Individual section scores from different tests cannot be mixed.

For 2018 entry, international applicants must have achieved a minimum score of 8 in each section of the old MCAT that must be obtained no earlier than 1 January 2015 OR a minimum score of 500 in the MCAT that must be obtained no later than 19 May 2017 to be considered.

Details about MCAT, including registration dates, location and dates of tests and preparation guidelines are available from the MCAT Program Office: Medical College Admission Test (MCAT) (<https://www.aamc.org/students/applying/mcat/>).

DAT AND CDAT (INTERNATIONAL DMD APPLICANTS ONLY)

The US Dental Admissions Test (DAT) and the Canadian Dental Aptitude Test (CDAT) can be used for international DMD entry. Applicants using either of these test results must achieve a minimum score of 15 in each of the sections to be considered for interview. The Manual Dexterity Test component of the CDAT is not included.

For 2018 entry, DAT and CDAT results must be obtained no earlier than 1 February 2015. Applicants who wish to submit DAT or CDAT results must upload a scanned copy of the test results to your submitted application using the 'UPLOAD DOCUMENT' function in Sydney Student by 27 June 2017 AND mail the original hard-copy test results which must be received by the University Admissions Office by 25 July 2017.

Details about the DAT, including registration information and test preparation material can be found on the American Dental Association's website here: <http://www.ada.org/en/education-careers/dental-admission-test>

Details about the CDAT, including registration dates and test information can be found on the Canadian Dental Association's website here: <http://www.cda-adc.ca/en/becoming/index.asp>

MEDICINE APPLICANTS: US CITIZENS/NATIONALS/PERMANENT RESIDENTS ONLY

If you are applying for the MD and you are a US citizen/national/permanent resident (regardless of whether you are also a citizen or permanent resident of a country other than the US), you are required to submit MCAT results.

The MCAT results are required so that Sydney Medical School can comply with US Department of Education requirements to participate in the US direct loan scheme. The University is required to provide the Department with lists containing MCAT results and the number of times that US students sat MCAT (but without students' names).

If you are a US citizen or national or permanent resident (but NOT an eligible domestic applicant), please note that, regardless of whether or not you wish to apply for the US loan:

- you must submit MCAT results at the time of application;
- you may submit both MCAT and GAMSAT results at the time of application if they both meet the minimum requirements, and the admission procedure will use whichever results in the higher ranking.

US FEDERAL STUDENT AID (FOR US CITIZENS, NATIONALS, OR PERMANENT RESIDENTS ONLY)

Currently, US students are eligible to apply for student loans from the US Government in order to cover fees and other costs in the Sydney Doctor of Medicine (MD) program.

US applicants for the MD program at Sydney Medical School should note the following important information.

- 1) From 1 March 2019, The University of Sydney will not accept applications for US Federal Student Aid from students enrolled in the MD. Students who enter the MD program in 2019 and wish to access US Federal Student Aid must apply for their loans before 1 March 2019.
- 2) US Federal Student Aid will not be available to students enrolled in the MD after 31 December 2020, regardless of when they first enrolled.
- 3) To be eligible to receive US Federal Student Aid in 2020, amongst other eligibility criteria, students must have remained continuously enrolled throughout the MD and must have accessed the Federal Student Aid scheme before 1 March 2019.

Please note that the eligibility of Sydney Medical School to participate in the US Federal Student Aid program is subject to review by the US Department of Education on an annual basis. Consequently, Sydney Medical School cannot guarantee that students enrolled in the MD will have access to US Federal Student Aid from 2017 to 2020. In addition, students enrolled in the MD are required to meet the standard US Federal Student Aid eligibility requirements in order to receive funding from 2017 to 2020. These eligibility requirements are outlined on the University's website: <http://sydney.edu.au/study/finances-fees-costs/fees-and-loans/international-student-loan-schemes.html>.

Enquiries can be directed to: medicine.admissions@sydney.edu.au. To discuss other financing options, students may wish to contact the International Loans Team at: international.finaid@sydney.edu.au.

ENGLISH LANGUAGE REQUIREMENT

Applicants whose first language is NOT English must provide evidence of minimum English language proficiency through one of the following means:

1. Complete tertiary studies taught in English

You need to show that you successfully completed tertiary studies in which the language of the institution and of instruction, examination and assessment was English. The studies need to have been undertaken no more than five years before the date of application for admission to the University of Sydney; or

2. Take an English proficiency test

Both MD and DMD require an IELTS (academic module) overall band score of 7.0, with a minimum of 7 in each band. All English tests need to be no more than two years old at the date of application.

Please refer to the [English language requirements](#) (under the "Postgraduate coursework" section) for further information and for the concordance table to convert the IELTS requirement to other English tests scores accepted by the University.

Note: The Dean of Medicine and the Dean of Dentistry may exempt an applicant from English language requirements in certain circumstances (see clause 24 of the [Coursework Policy 2014](#)).

INVITATION TO INTERVIEW AND CONFIRMATION PAGE

Applicants who meet the minimum GPA and admissions test requirements (to be determined by Sydney Medical School and the Faculty of Dentistry once all applications have been received) will be invited to an interview.

Invitations to interview will be sent via email (NOT via the Sydney Student Portal) and will require applicants to complete the following two steps:

1) A confirmation page

The email will contain a link to the online confirmation page that will require eligible applicants to check and confirm the details of their application, pertaining to the admissions criteria set out in this Guide (e.g. GPA, GAMSAT/MCAT etc.).

Applicants must check the confirmation page carefully. The information confirmed on the confirmation page will be considered as final, and applications will be processed on the basis of this information.

Applicants who find any incorrect information must submit an error report as instructed on the confirmation page. This must be done prior to the deadline - no changes can be accepted after the deadline. After an error report is submitted, and if it is found to be legitimate, the error will be corrected, and the applicant will receive a further request and a new deadline (if required) to complete the confirmation page.

2) Interview booking

Once an applicant has completed the confirmation page or submitted an error report, s/he will be directed to an online interview booking page that will allow him/her to select and book an interview date and time.

International applicants who qualify for an interview, including those already in Sydney, will be interviewed via an online link using Skype. When making an interview booking, applicants will be required to enter their Skype user name and phone number (including the country code and area code - in case that there is any problem during their interview).

There is no interview booking fee.

The email will include the deadline by which applicants must submit the confirmation page and complete their interview booking.

Eligible applicants who have applied to both the MD and DMD will only be required to complete one confirmation page and attend one MMI. The information confirmed on the confirmation page and MMI results will be considered by both faculties.

THE INTERVIEW PROCESS

The interview process is known as the Multiple Mini Interview (MMI).

The actual MMI is expected to last approximately 45 minutes. However, the entire process including registrations, a feedback session, and possible delays, may take up to 2 hours.

The MMI process is designed to assess the suitability of applicants based on qualities important for success in the MD and DMD, including:

- good communication skills;
- a sense of caring, empathy and sensitivity;

- an ability to make effective decisions;
- an ability to contribute as a member of a team;
- an appreciation of the place of medicine in the wider context of healing; and
- a sense of vocation, motivation and commitment within the context of medicine.

The MMI process aims to broadly sample the candidate's competencies in order to gain an accurate picture of the candidate's strengths and weaknesses. This is achieved by having several brief interviews with different interviewers.

Interviewers will not be provided with any information about applicants (including admissions test and GPA scores).

Further details of the interview process will be sent to applicants who qualify for interview.

THE INTERVIEWERS

All MMI interviewers are volunteers who have completed a training program and observed the MMI process.

They are recruited from the following groups:

- Academic, clinical academic, and staff of Sydney Medical School and the Faculty of Dentistry;
- Graduates from Medicine and Dentistry;
- Persons drawn from the wider community.

Where possible, the interviewers will include 2 or 3 people of each gender.

ADDITIONAL INTERVIEW

The following applicants who are eligible for interview will be required to attend an additional interview as part of the selection process:

- Applicants who have previously been excluded or involuntarily suspended from a course at a tertiary education institution.
- Applicants for the MD who have been enrolled or hold a deferred or suspended place in a medical program at any higher education institution.
- Applicants for the DMD who have been enrolled or hold a deferred or suspended place in a dental program at any higher education institution.
- Applicants whose registration in any profession, in Australia or overseas, has been suspended or cancelled or made subject to conditions/undertakings/limitations OR who have been disqualified from applying for registration for, or been the subject of conduct, performance or health proceedings in, any profession in Australia or overseas.

Applicants who require an additional interview will be contacted via email with further details.

SPECIAL CONSIDERATION

Applicants who believe that their performance in the MMI process has been compromised by serious illness or misadventure may apply for special consideration in writing to the Admissions Committee via the University Admissions Office, providing supporting documentation, within **two days** of the interview. The Admissions Committee Executive will consider the application, and determine whether any further action is required. The decision of the Committee Executive will be final. Should special consideration be granted, the applicant will be invited to attend a new MMI and his/her previous MMI results will be void. Please note that applicants will not receive bonus MMI points as a result of a special consideration application.

OFFERS

Offers of places are made by the Deans of Sydney Medical School and the Faculty of Dentistry on the basis of merit, as indicated by applicants' final rankings.

Applicants are required to meet the minimum MMI requirements, which will be determined by the Admissions Committee. Applicants will then be ranked on the basis of a combination of admissions test results and interview performance. This will generate a single ranked list of applicants.

Offers will be made in sequence commencing with the applicant with the highest ranked score. Should it arise that applicants are ranked equally and need to be separated, the applicants' average GAMSAT/MCAT scores will be used first, and then the MMI scores. If further separation is required, the applicants' GPA at the time of application may be used, at the discretion of the Dean or Deputy Dean.

Successful applicants will be given a firm date by which to accept the offer of a place. Offers not accepted in accordance with the instructions contained in the offer letter by that date will lapse.

Unconditional offers are only made to applicants who are already graduates and who have provided all necessary documents to the University. Conditional offers are made to applicants who have not completed the final year of their bachelor's degree or applicants who have not provided all necessary documents to the University. A conditional offer will be withdrawn and cancelled if the applicant fails to achieve the required GPA on completion of the degree, if the applicant fails to complete the degree by the deadline stipulated in their offer letter, or if the applicant fails to provide all necessary documents by the deadline. Refer to the timeline and offer letters for details.

Note: Any applicant for the MD or DMD who has previously been offered and accepted a place in that program at the University of Sydney and has failed to enrol, or having enrolled, subsequently withdrew from or discontinued that program without prior approval, is deemed to be ineligible for admission to the MD or DMD for a period of two years.

DEFERRAL

Both Sydney Medical School and the Faculty of Dentistry are currently reviewing their deferral rules.

Please refer to the relevant websites for any update:
<http://sydney.edu.au/medicine/study/md/index.php> and
<http://sydney.edu.au/dentistry/study/dentistry/index.php>.

Applicants to the MD should be prepared and ready to commence studies in the year for which they have applied.

NO EXEMPTIONS AND ADVANCED STANDING

No applicant will be admitted to the MD or DMD with advanced standing or credit, and exemptions from participating in part of the program will not be offered.

APPEALS

Applicants who believe that there has been a procedural or other non-academic error in the handling of their application for admission to the MD or DMD may appeal in writing, with supporting evidence, to the Admissions Committee via the University Admissions Office (see Contact Us page at the end of this Guide).

Please consult the website at <http://sydney.edu.au/medicine/study/md/admission/selection-criteria.php> for the most up-to-date information.

IMPERMISSIBLE CONDUCT

Sydney Medical School and the Faculty of Dentistry reserve the right, in their sole discretion, to reject an application for admission or to vary or cancel an offer of admission if an applicant's conduct during the admissions process or prior to enrolment causes them to form the view that the applicant is unsuitable for admission to the MD or DMD.

Examples of conduct that might make an applicant unsuitable for admission to the MD or DMD include (but are not limited to):

- failure by the applicant to treat University of Sydney employees, students, applicants or other members of the University community with respect and courtesy, including failure to use appropriate language and tone in written or verbal communications;
- failure by the applicant to act honestly and ethically in their dealings with University of Sydney employees, students, applicants or other members of the University community;
- conduct that results in the applicant being excluded from another higher education institution, or from a course or program offered by another higher education institution;
- conduct that gives Sydney Medical School and/or the Faculty of Dentistry reasonable cause to believe that enrolling the applicant in clinical training may place them, their peers, or members of the public at risk of harm; and
- conduct that results in the applicant being charged with a criminal offence.

REQUIREMENTS FOR MD AND DMD STUDENTS

Please note that all MD and DMD students are required to:

- meet the [Inherent requirements for Medicine](#) or the [Inherent requirements for Dentistry](#);
- comply with the [Sydney Medical Program Statement of Expectations Provisions](#) or the [Faculty of Dentistry Statement of Expectations Provisions](#);
- meet the [NSW Ministry of Health requirements for clinical placement](#); and
- submit a current approved [senior first aid certificate](#).

Successful applicants will be provided with further details.

POST-OFFER REQUIREMENTS

FOR STUDENTS WHO ARE OFFERED AND ACCEPT A PLACE IN THE MD OR DMD

Students who are offered and accept a place in the MD or DMD will be required to meet the following requirements in January of the year of MD commencement and will receive further information after their offer has been accepted.

NSW MINISTRY OF HEALTH COMPLIANCE CHECKING

The NSW Ministry of Health has implemented a placement system for all clinical placements at NSW Health facilities – known as “ClinConnect”. The system requires that all students undergo compliance checking before they are permitted to attend any clinical teaching at a hospital.

Please refer to the link below to learn about the COMPULSORY NSW Ministry of Health compliance checks.

http://sydney.edu.au/current_students/student_administration/enrolment/course-specific-requirements.shtml

New students undergo compliance checking by attending a scheduled on-campus verification session and presenting the required documents and forms to be checked by representatives from the NSW Ministry of Health. Copies (including certified copies) are not accepted.

NSW WORKING WITH CHILDREN CHECK (WWCC)

Sydney Medical School and the Faculty of Dentistry require all students to provide a WWCC after enrolment. To obtain a WWCC, students must complete the online NSW Working with Children Check application available from the NSW Government, Office of the Children's Guardian web site. Applications are usually completed within days but can take up to 28 working days to complete.

Please note that new students must complete a proof of identity in person in NSW. They cannot complete this transaction from interstate or overseas; they cannot complete it over the phone or online and they cannot delegate it to another person. They will be required to provide an address in Australia when completing an application. International students may wait until their arrival in Australia before submitting an application.

FIRST AID TRAINING:

MD and DMD students are required to present an original Current First Aid Training Certificate.

Which training course is acceptable? First aid training courses have theoretical as well as a practical component. As an example, the majority of first aid training courses are held over 2 days in the classroom or 1 day practical in the classroom with prior online learning.

Here is a list of the content to be covered in an acceptable first aid training course:

- Basic Life Support (DRSABCD)
- CPR (cardiopulmonary resuscitation) and AED (Automatic External defibrillator)
- Shock Management
- Airway Management - Asthma, Choking, Severe Allergic Reaction, Hyperventilation
- Cardiac Emergencies
- Seizures and Convulsions
- Bleeding and Wound Care

- Burns and Scalds
- Extremes of Heat and Cold
- Musculoskeletal Injuries
- Poisons and Toxic Substances
- Bites and Stings
- Abdominal injuries

Note that current industry standards state that this qualification must be updated every 3 years with the CPR component being updated every 12 months.

The following organisations conduct First Aid Training courses that are recommended by Sydney Medical School and the Faculty of Dentistry. However, new students must ensure that the course covers the content listed above.

- Australian Red Cross Society (<http://www.redcross.org.au/>)
- Medilife (<http://www.medilife.com.au/>)
- Royal Life Saving Society Australia (<http://www.royalnsw.com.au>)
- St. John Ambulance Australia (<http://www.stjohn.org.au>)
- Sydney Uni Sport & Fitness (http://www.susf.com.au/page/first_aid_courses.html)
- Canadian Red Cross (Canada)
- St. John's Ambulance (Canada & USA)
- American Heart Association (USA)

HOW DO YOU APPLY?

There are two ways to submit an international application:

1. Submit an [online MD application](#) **INCLUDING** a supplementary form (see next page) and/or [online DMD application](#) **INCLUDING** a supplementary form (see next page) directly to the University with complete supporting documents by the deadline*; OR
2. Submit an application, including **a supplementary form (see next page)**, with complete supporting documents through a [University representative](#) (agent). Agents must submit ONLINE applications, supplementary forms and complete supporting documents to the University by the deadline*.

*Please refer to <http://sydney.edu.au/medicine/study/md/admission/dates.php> for the timeline.

NOTE:

- 1) Only online applications are accepted.
- 2) No applications received by the University after the deadline will be considered or processed. If you intend to submit an application through an agent, it is your responsibility to ensure that your agent will complete the required application procedure by the deadline.
- 3) If applying for both the MD and DMD, applicants must submit **two** separate applications including two supplementary forms, both with complete supporting documentation, by the deadline.

An application for the MD and/or DMD will not be processed if an applicant fails to complete one or more of these components.

SUPPLEMENTARY FORM

Applicants are instructed to submit their average GAMSAT score (if applicable) and declare any professional misconduct history on a supplementary form as part of their application to the University of Sydney.

Applicants must:

- Click on the [supplementary form link](#) to access the supplementary form.
- Complete the supplementary form and save it to their desktop.
- Upload the PDF of their completed supplementary form to their online application through Sydney Student.

A sample of the supplementary form is included below for reference purposes.

1. PERSONAL DETAILS	
Given name/s:	
Last name:	
Student ID or IPU Number/Application SID (e.g. IPU123456789):	
2. GAMSAT	
GAMSAT ID number:	
Average GAMSAT score: (1 x Section I + 1 x Section II + 1 x Section III) ÷ 3	
3. PROFESSIONAL MISCONDUCT	
Has your registration in any profession, in Australia or overseas, been suspended or cancelled or made subject to conditions/undertakings/limitations OR have you been disqualified from applying for registration for, or been the subject of conduct, performance or health proceedings in, any profession in Australia or overseas?	Yes <input type="checkbox"/> No <input type="checkbox"/>
Applicants who answer 'Yes' to the question above must complete the following five (5) questions and upload documentation regarding any professional misconduct in Australia or overseas:	
Is your registration in any profession, in Australia or overseas, currently suspended or cancelled?	Yes <input type="checkbox"/> No <input type="checkbox"/>
Have you previously had your registration cancelled, refused or suspended in Australia or overseas?	Yes <input type="checkbox"/> No <input type="checkbox"/>
Has your registration ever been subject to conditions, undertakings or limitations in Australia or overseas?	Yes <input type="checkbox"/> No <input type="checkbox"/>
Are you disqualified from applying for registration, or being registered, in any profession, under the National Law or a corresponding prior Act?	Yes <input type="checkbox"/> No <input type="checkbox"/>
Have you been, or are you currently, the subject of conduct, performance or health proceedings whilst registered under the National Law, a corresponding prior Act or the law of another jurisdiction in Australia or overseas?	Yes <input type="checkbox"/> No <input type="checkbox"/>

APPLICATION CHECKLIST – INTERNATIONAL APPLICANTS

Applicants can only submit one (1) application for each Course for the same intake. Any subsequent application(s) for the same Course will not be accepted. If you believe you have made a mistake in your application and only realise after submission of the application PLEASE DO NOT WITHDRAW YOUR APPLICATION and submit a new application for the same Course. You should outline the amendments you wish to make in a Word document and then upload this document to your submitted application using the 'UPLOAD DOCUMENT' function in Sydney Student.

1.	<input type="checkbox"/>	<p>Supplementary Form: You must download, complete and upload the supplementary form (refer to 'HOW DO YOU APPLY?' section for details) regarding your average GASMAT score (if applicable) and professional misconduct to your online application through Sydney Student OR submit it to your agent.</p>
2.	<input type="checkbox"/>	Proof of citizenship: Please provide a copy of your valid passport photo page.
3.	<input type="checkbox"/>	<p>You completed or will complete your bachelor's degree (pass or honours) with at least 2 years full-time equivalent at the awarding institution, which is a recognised institution, between 1 January 2008 and 1 January 2018.</p> <p>If not undertaken at the University of Sydney, you must provide a full OFFICIAL transcript of your academic records for each program attempted at a tertiary level, and proof of completion of any previous tertiary degree(s) if not stated on your transcripts.* An official transcript is a university's certified statement of your academic record. It contains the university seal. The University of Sydney does not accept internal transcripts, online statements of results, printouts of academic records, or any other unofficial transcript.</p> <p>→Go to item 5.</p>
4.	<input type="checkbox"/>	<p>You completed your bachelor's degree (pass or honours) with at least 2 years full-time equivalent at the awarding institution, which is a recognised institution, prior to 1 January 2008 and you either completed/will complete a post-graduate diploma or master's by coursework or were awarded/will be awarded a master's degree by research or PhD from a recognised institution between 1 January 2008 and 1 January 2018.</p> <p>If not undertaken at the University of Sydney, you must provide a full OFFICIAL transcript of your academic records for each program attempted at a tertiary level, and proof of completion of any previous tertiary degree(s) if not stated on your transcripts.* An official transcript is a university's certified statement of your academic record. It contains the university seal. The University of Sydney does not accept internal transcripts, online statements of results, printouts of academic records, or any other unofficial transcript.</p> <p>→Go to item 5.</p>
5.	<input type="checkbox"/>	<p>You completed your bachelor's degree (pass or honours) with at least 2 years full-time equivalent at the awarding institution*, which is a recognised institution, prior to 1 January 2008 and you need to demonstrate to the satisfaction of the Dean sustained research productivity in a relevant discipline within this 10 year period.</p> <p>You must provide supporting documentation.</p>
6.	<input type="checkbox"/>	You have valid admissions test results.



		<p>If you are providing GAMSAT results, you must enter your correct GAMSAT results on your online application form and enter your average GAMSAT score on the supplementary form. (Please refer to the 'HOW DO YOU APPLY?' section for details.)</p> <p>If you are providing DAT or CDAT results, you must upload your DAT/CDAT test results AND mail the original hard-copy test results which must be received by the University Admissions Office - Level 4, Jane Foss Russell (G02), The University of Sydney NSW 2006 - by 25 July 2017.</p>
7.	<input type="checkbox"/>	You are applying for admission to the DMD. You must provide proof of having met the DMD Biology prerequisite.
8.	<input type="checkbox"/>	Where applicable, you must provide documentation regarding your exclusion from any course at a tertiary institution.
9.	<input type="checkbox"/>	Where applicable, you must provide a transcript for your previous enrolment, or provide relevant documentation for deferral or suspension in a medical program/dental program at a tertiary institution.
10.	<input type="checkbox"/>	Where applicable, you must provide documentation regarding your professional misconduct in Australia or overseas and answer the relevant questions correctly on the supplementary form (refer to the 'HOW DO YOU APPLY?' section for details).
11.	<input type="checkbox"/>	Where applicable, you must provide English language test results (e.g. IELTS or TOEFL test results).
12.	<input type="checkbox"/>	Where applicable, you must provide a marriage certificate or other official documentation to verify your change of name.
13.	<input type="checkbox"/>	Where applicable, you must provide an official/certified English translation of any document not issued in English as well as original language versions of those documents.
14.	<input type="checkbox"/>	<p>You have not previously been offered and accepted a place in the MD or DMD program at the University of Sydney and failed to enrol, or having enrolled, subsequently withdrawn from or discontinued that program without prior approval.</p> <p>If yes, you are deemed to be ineligible for admission to the MD or DMD for a period of two years. You may reapply for the MD or DMD after this period.</p>

* Applicants who have studied at the University of Sydney, please note:

- You do not need to provide your University of Sydney official transcript(s) at the time of application; but
- You do need to supply other required documents; and
- If you are made a conditional offer based on the completion of your bachelor's degree at the University of Sydney, you **MUST**, by the deadline, submit complete academic transcripts and an official letter issued by the Registrar/Academic Affairs Office confirming the completion of the qualification inclusive of the date on which the award will be conferred. Refer to the timeline and offer letters for details.

Even if you have previously applied for a course at the University of Sydney and provided documents at that time, you must provide all required documents for your new application to the MD/DMD as per the checklist.

It is your responsibility to ensure that all necessary documents listed above are uploaded to your application. The University of Sydney will not contact you if you fail to provide any of the required documents.

HOW TO USE THE ONLINE SYDNEY STUDENT APPLICATION FORM

BEFORE YOU BEGIN

Please make sure that you have the required documents ready for uploading to the Sydney Student online application system (refer to the checklist).

You will be required to upload scanned documents to complete your online application. These documents do not need to be certified. Please note the maximum file size is 10MB.

Note:

- 1) The document upload functionality on the application form does not allow for multiple documents to be uploaded using the same upload button. Please combine your documents into a single file where necessary.
- 2) Most MD and DMD applicants DO NOT need to upload any of the following documents as none of these are considered in the admissions process:
 - evidence of work experience or curriculum vitae;
 - information about academic awards or prizes;
 - reference letters and letters of recommendation.

There are two exceptions, as follows:

- Applicants whose bachelor's degree was completed more than 10 years and who need to demonstrate to the satisfaction of the Dean sustained research productivity in a relevant discipline within this 10 year period; and
- Applicants whose registration in any profession, in Australia or overseas, has been suspended or cancelled or made subject to conditions/undertakings/limitations OR who have been disqualified from applying for registration for, or been the subject of conduct, performance or health proceedings in any profession in Australia or overseas

DOCUMENT SUBMISSION GUIDELINES

The University of Sydney accepts scanned documents submitted online in support of applications for admission to courses of study. All supporting documents must be true and complete records. You should be prepared to provide original documents or original certified copies of supporting documents upon request at any time.

Documents submitted in a language other than English must be accompanied by a complete English translation. The University accepts translations to English made by an accredited translator with a government body, the Registrar of the issuing institution or, for international applicants, registered University of Sydney Education Agents who are designated translators. Applicants from the Peoples' Republic of China may have their academic transcripts referred to the Ministry of Education's China Academic Degrees and Graduate Education Development Centre (CDGDC) for authentication.

Please note that detailed checking of supporting documents is an inherent element of our admissions process and may involve contacting the original issuing authority, relevant tertiary admissions centre, organisation, or individual, as required, to verify documents. A failure to provide documents on request, or the discovery of either fraudulent documents or a misrepresentation of true circumstances in association with your application, may lead to the rejection of your application for admission, the withdrawal of your offer, or the cancellation of your enrolment.

THE ONLINE APPLICATION FORM

If you have not applied for a course at the University before, you will be required to create an account. As part of this process, you will receive several emails confirming your login details.

Please note that some emails/attachments may not be accepted or may be marked as junk or flagged as spam by some mail providers (e.g. Hotmail, Yahoo or Gmail). If you do not receive any confirmation emails from the University, please check your junk/spam email folder. Applicants are advised not to provide an email address from one of these providers. If you provide your current university email address, please ensure that it will be active until February 2018.

All communication from the University will be via the Sydney Student portal and/or via email. It is the responsibility of applicants to check their accounts and the University will not be held responsible for any unread email communication or for any resulting delays or disadvantage.

Should you need to change your email address at any stage throughout the admissions process, please contact the University Admissions Office via email (see Contact Us page at the end of this Guide).

NOTE: Most pages of the online form are generic to all University of Sydney applicants. There are several sections that do not apply to MD or DMD applicants.

Applicants can only submit one (1) application for each Course for the same intake. Any subsequent application(s) for the same Course will not be accepted. If you believe you have made a mistake in your application and only realise after you have submitted the application PLEASE DO NOT WITHDRAW YOUR APPLICATION and submit a new application for the same Course. You should outline the amendments you wish to make in a Word document and then upload this document to your submitted application using the 'UPLOAD DOCUMENT' function in Sydney Student.

You are required to complete a supplementary form (refer to the 'HOW DO YOU APPLY' section on pages 21-22 for details) as well as the online application form. You MUST download, complete and upload the supplementary form along with other required documents (see the checklist) at the time of application or by the deadline*.

***Note: Any required documents received by the University after the deadline will not be considered or processed. Please refer to the timeline at:**

<http://sydney.edu.au/medicine/study/md/admission/dates.php>.

Please contact the University Admissions Office (see Contact Us page at the end of this Guide) if you require any assistance with the application form. This may include:

- Uploading documents
- Completing the online form
- Submitting the online form
- Making changes to an application after submission (but prior to the application closing date)

PAGES IN THE ONLINE APPLICATION FORM

YOUR COURSE OPTIONS

Applicants who are applying for both the DMD and MD must submit **two** separate applications, including two supplementary forms, both with complete supporting documentation, by the deadline to ensure that both applications are assessed.

YOUR PERSONAL INFORMATION

YOUR DETAILS

- Given name(s) and Family name:

Please ensure the name you use in your application is your full legal name as shown on your passport.

SCHOLARSHIPS

Where applicable, applicants may provide such information. Please note that this information plays no role in the admissions process.

YOUR QUALIFICATIONS

ENGLISH LANGUAGE PROFICIENCY

- Is English your first language?

If English is your first language, you do not need to provide proof of English language proficiency. If English is not your first language, you must upload proof of English language proficiency eg. official transcripts or IELTS/TOEFL results.

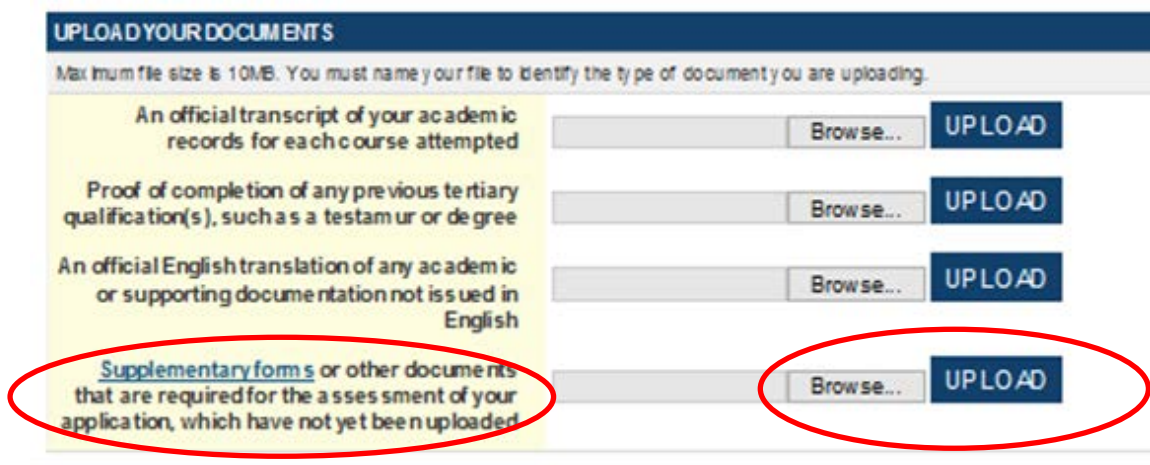
RECORD OF EXCLUSION

- Have you ever been excluded or suspended from a course at a tertiary education institution? If you have previously been excluded or suspended from a course at a tertiary education institution, you **MUST** upload documents outlining the circumstances.

ACADEMIC QUALIFICATIONS

- Qualification
Please provide details of all of the degrees you have completed or plan to complete before commencing the MD or DMD. Use the check box to 'Add another qualification' for each additional degree.

UPLOAD YOUR DOCUMENTS



UPLOAD YOUR DOCUMENTS

Maximum file size is 10MB. You must name your file to identify the type of document you are uploading.

An official transcript of your academic records for each course attempted	<input type="text"/>	<input type="button" value="Browse..."/>	<input type="button" value="UPLOAD"/>
Proof of completion of any previous tertiary qualification(s), such as a testamur or degree	<input type="text"/>	<input type="button" value="Browse..."/>	<input type="button" value="UPLOAD"/>
An official English translation of any academic or supporting documentation not issued in English	<input type="text"/>	<input type="button" value="Browse..."/>	<input type="button" value="UPLOAD"/>
<u>Supplementary forms</u> or other documents that are required for the assessment of your application, which have not yet been uploaded	<input type="text"/>	<input type="button" value="Browse..."/>	<input type="button" value="UPLOAD"/>

You are instructed to submit your average GAMSAT score (if applicable) and declare any professional misconduct history on a supplementary form. You must download, complete and upload your completed supplementary form to your online application through Sydney Student as part of your application (refer to the 'HOW DO YOU APPLY?' section on pages 21-22 for details).

ACADEMIC PRIZES OR AWARDS

Details of academic prizes or awards may only be required for applicants whose bachelor's degree was completed more than 10 years and who need to demonstrate to the satisfaction of the Dean sustained research productivity in a relevant discipline within this 10 year period.

FURTHER REFERENCES

PROFESSIONAL ASSOCIATIONS

RELEVANT WORK EXPERIENCE

Details of professional associations or relevant work experience are only required for applicants whose bachelor's degree was completed more than 10 years and who need to demonstrate to the satisfaction of the Dean sustained research productivity in a relevant discipline within this 10 year period OR applicants whose registration in any profession, in Australia or overseas, has been suspended or cancelled or made subject to conditions/undertakings/limitations OR who have been disqualified from applying for registration for, or been the subject of conduct, performance or health proceedings in any profession in Australia or overseas.

COURSE CHOICE

ADMISSIONS GUIDE

- *I confirm that I have read and understood all the information outlined in the current Admissions Guide.*

You must tick the box next to the question above in order to proceed with the application.

QUALIFICATIONS ASSESSMENT SERVICE

Please provide your qualifications Assessment Service (QAS) number.

- *What is your QAS number?*

International applicants must enter "930000000".

YOUR ADMISSIONS TEST RESULT

Please refer to the 'ADMISSIONS TEST RESULTS (GAMSAT)' and 'HOW DO YOU APPLY' sections of this Guide.

GAMSAT RESULT DETAILS

For applicants providing GAMSAT results: Although you will be asked to provide your overall GAMSAT score on the online application form, it will play no role in the assessment of your application. You are instructed to submit your average GAMSAT score on a supplementary form. On the supplementary form, you will also need to answer the question(s) about 'Professional Misconduct'. Please refer to the 'ADMISSIONS TEST RESULTS (GAMSAT)' and 'HOW DO YOU APPLY' sections of this Guide.

PREVIOUS ENROLMENT IN A MEDICAL PROGRAM/DENTAL PROGRAM AT ANY HIGHER EDUCATION INSTITUTION

Applicants for the MD:

If you have been enrolled in a medical program at any higher education institution, you **MUST** answer 'Yes' to the first question below, provide further details and upload the required supporting documentation.

Have you ever been enrolled in a medical program at any higher education institution? (mandatory question) Yes No

If you answered 'yes' to the question above, you must upload the relevant academic transcript and provide details below:

Start date (dd/mm/yyyy)

End date (dd/mm/yyyy)

Reason(s) for discontinuation

UPLOAD YOUR DOCUMENTS

Academic transcript(s) for previous enrolment
UPLOAD

Applicants for the DMD:

If you have been enrolled in a dental program at any higher education institution, you **MUST** answer 'Yes' to the first question below, provide further details and upload the required supporting documentation.

Have you ever been enrolled in a dental program at any higher education institution? (mandatory question) Yes No

If you answered 'yes' to the question above, you must upload the relevant academic transcript and provide details below:

Start date (dd/mm/yyyy)

End date (dd/mm/yyyy)

Reason(s) for discontinuation

UPLOAD YOUR DOCUMENTS

Academic transcript(s) for previous enrolment
UPLOAD

REQUIREMENTS FOR US CITIZENS/NATIONALS/PERMANENT RESIDENTS (MD ONLY)

If you are a US citizen, please ensure that you answer the questions below very carefully.

Q. Are you a US citizen, national or permanent resident? Yes or No

Q. If are you a US citizen, national or permanent resident, are you also a citizen, national or permanent resident of a country other than the US? Yes or No

Please refer to the 'MEDICINE APPLICANTS WHO ARE ALSO US CITIZENS/NATIONALS/PERMANENT RESIDENTS ONLY' section of this Guide for further details.

DECLARATION

You will be required to read the following declarations carefully and tick the box below them before submitting your application to confirm that you agree.

Please read these declarations carefully and tick the box below before submitting this application to confirm that you agree. Mandatory fields are marked with an asterisk(*).

I understand	<ul style="list-style-type: none"> • That if I fail to provide my true and complete academic record, or I misrepresent or have misrepresented my true circumstances, that I may be excluded from the University of Sydney, and that the University may terminate my studies at any time. • Giving false or misleading information is a serious offence under the Criminal Code of the Commonwealth Government of Australia. • The University of Sydney may vary or cancel any decision it makes if the information I have given is incorrect or incomplete. • All documents submitted become the property of the University of Sydney and will not be returned. • I am fully responsible for my educational and living expenses while studying at the University of Sydney. • Neither the University of Sydney nor the Australian Government can assist me if I do not have sufficient funds to support my candidature.
I authorise	<ul style="list-style-type: none"> • The University of Sydney to make any enquiries, including obtaining or verifying any records and/or other information from or with any education institution, tertiary admissions centre or other organisation (whether education or otherwise), or individual, if it considers it necessary in connection with my application, enrolment and/or candidature.
I agree	<ul style="list-style-type: none"> • To comply with the rules on admission and enrolment of the University of Sydney as varied from time to time. • To inform the University of Sydney immediately if there is any change to the information I have given in this application. • That the information I have given in this application is true and correct.
I understand and agree to the above * <input type="checkbox"/>	

[BACK](#) [SAVE AND RETURN LATER](#) [SUBMIT](#)

SUBMITTING YOUR APPLICATION

Once you have completed the application form, you must ensure that you **submit your application**. Do not simply save and exit; this is not the same as submitting your application. Submitting the application includes agreeing to the terms and conditions and declaration. Your application cannot be considered if you do not complete this final step in the application process.

If you have successfully submitted your application, you will receive within 24 hours, an automated confirmation email containing your 9-digit Student ID number (SID). (For new applicants, the SID will start with 48xxxxxx. For previous applicants it will be the same SID as per your previous application(s)/enrolment(s).) You will then be able to login to your Sydney Student portal with this Student ID number to view the status of your application. Please check your junk mail folder if you do not receive the email.

In the event that you need to make any changes to your application after submission but prior to the application closing date, DO NOT withdraw the application and attempt to submit a new application. It will not save. Please contact the University Admissions Office (contact details on the next page) and staff will assist you with your changes.

CONTACT US

STUDENT CENTRE

ONLINE

Make an online enquiry via <http://sydney.edu.au/contact-us.html>

PHONE

1800 SYD UNI (1800 793 864)
+61 2 8627 1444 (outside Australia)

IN PERSON

Student Centre, Level 3
Jane Foss Russell Building (G02), Darlington Campus
The University of Sydney

Operating hours are between 9am and 5pm (local time), Monday to Friday.

UNIVERSITY ADMISSIONS OFFICE

EMAIL

admissions.medicine@sydney.edu.au for MD
admissions.dentistry@sydney.edu.au for DMD

(include your application ID (i.e IPU000xxxxxx) or 9-digit Student ID Number (SID) and include in the subject line that you are an **international** applicant)