

1. The Question

Why is it so hard for new theories to gain acceptance?

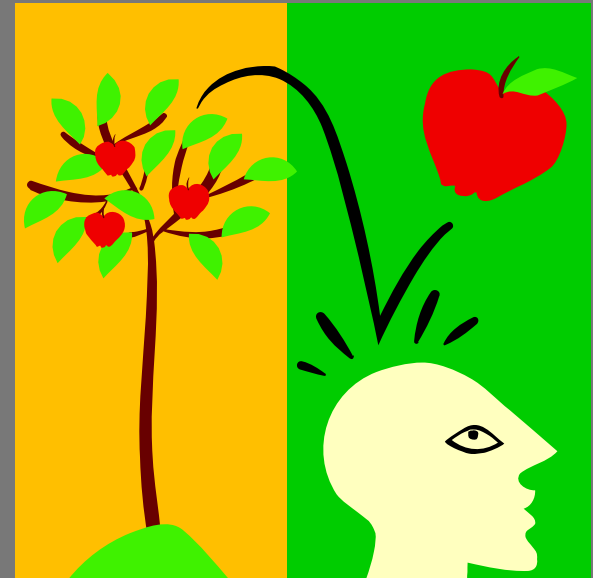
The theory of Plate Tectonics is an excellent example of a new theory's struggle for acceptance.



2. Information Sources

You will be reading three quotations.

Relate each quotation to the acceptance of new scientific theories.



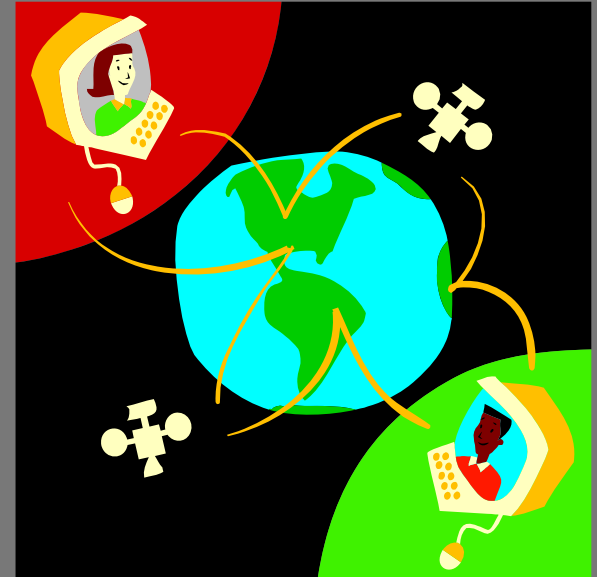
3. The Student Activity

Choose one of the following quotes and illustrate it in relation to the theory of plate tectonics.

Quote#1

Quote #2

Quote #3

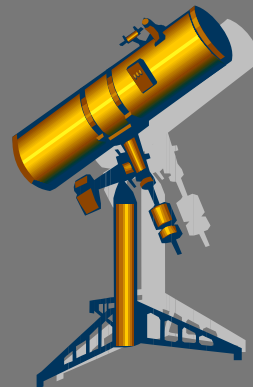
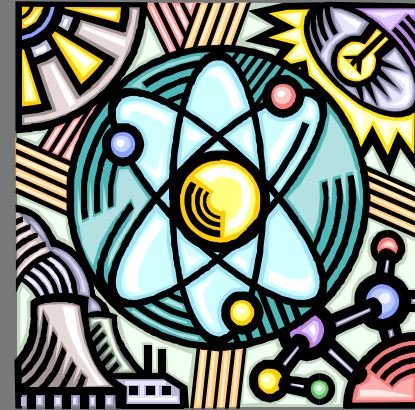


4. The Assessment Activity

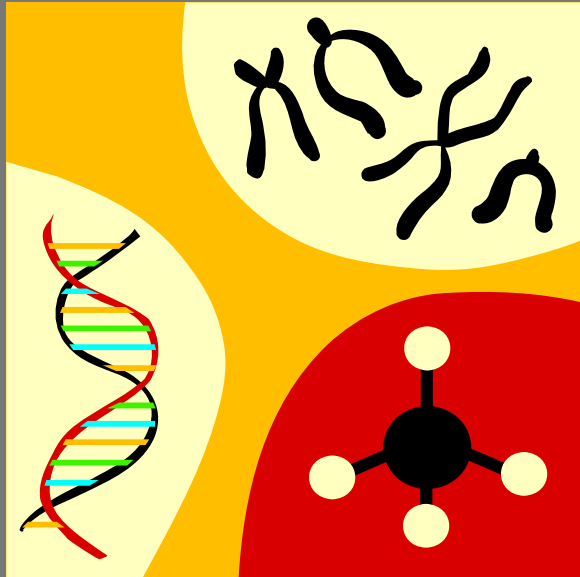
Write your own quote from today's time frame.

Your quote should be written for the acceptance of new theories in the world of science today.

Reflect on today's world and how it regards new theories that are currently being developed in the scientific community.



5. Enrichment Activities



The following are excellent sites about the acceptance of new theories. Use these sites to research the acceptance of new theories in the past and today.

- [Site One](#)
- [Site Two](#)

123456

6. Teacher Support Materials

- 8.14 Science concepts. The student knows that natural events and human activities can alter Earth systems. The student is expected to:
 - (A) predict land features resulting from gradual changes such as mountain building, beach erosion, land subsidence, and continental drift;
- 8.3A Analyze, review, and critique scientific explanations, including hypotheses and theories as to their strengths and weaknesses using scientific evidence and information

