



EVEREST THEATRE

TECHNICAL SPECIFICATIONS

The Everest Theatre

The Everest Theatre is a flexible theatre with a seating capacity of 411-596 in a traditional proscenium-style configuration. It can be used for music, dance and theatre performances and incorporates acoustic features to provide optimum sound quality as well as a removable forestage that can vary the stage depth by over six metres. It is also an ideal venue for conferences, seminars and film screenings.

The forestage and rigging can be used to create two additional proscenium arch thrust modes known as "Everest Intimate". For more information on Everest Intimate, contact the Seymour Centre Technical Manager on (02) 9351 7946.

(For dimensions and specifics of the venue, see attached floor plan and key)

Other Specifications

Lighting

- 20 x Selecon 18/32 zoom spots
- 16 x Selecon 1200 w Fresnel's
- 35 x Selecon 1200 w Rama hp Fresnel's
- 12 x Source 4-750w 19 degrees fixed spots
- 8 x Source 4-750w 26 degrees fixed spots
- 9 x prelude 16/30 zoom spots

Control

- 1 x Strand 520i Lighting console
- 60 x Strand mini pak 5 kw dimmers
- 28 x Strand JTM dimmers
- 22 x Strand 2kw dimmers
- DMX patching to catwalks and stage

Rigging

- 32 x fly bars on a 16 x hydraulic ram fly system
- 1 x Truss grid over seating for Everest intimate mode operating on 6 x chain hoist motors
- 1 x Kinesys motor controller system for truss grid

Sound

- 1x ilive 112 digital mixer 48 in / 24 out
- 2 x Martin H3 full range speakers
- 3 x H2 Speakers (1 used as a centre fill)
- 4 x 3602 PLX 2 Ch amps
- 1 x i dr 8 processor
- 2 x HPR 115 Powered 15inch 2 way speakers (side fill)
- 1 x Klotz 32 into 8 stage box system
- Barlo talk back system
- 100v show relay/ paging system
- 1 x Denon DN-C635 CD Player

Hiring the Theatre

The theatre is hired 'bare walls'. Listed below are the services and facilities that are included in the hire charge.

- | | |
|---------------|---|
| Video | <ul style="list-style-type: none">• May be available. Discuss with Technical Manager |
| Dressing Room | <ul style="list-style-type: none">• Dressing rooms and wardrobe facilities are available for the use of the hirer after consultation with the Technical Manager |
| Green Room | <ul style="list-style-type: none">• The artists' green room, backstage, is available for the use of the visiting company members. |
| Foyer | <ul style="list-style-type: none">• Foyer display facilities can be made available to the hirer after consultation with the Front-of-House Manager. |

Staffing

Technical

The standard operating staff for the theatre is:

- 1 x Head Electrician
- 1 x Head Mechanist
- 1 x Lighting Board Operator

This is the MINIMUM operating staff charged to the hirer. There are additional charges for extra technicians required plus overtime and penalty payments incurred.

Front-of-House

The standard operating staff for the theatre is:

- 1 x Front- of- House manager
- 2 x Ushers

Further details can be obtained from the General Manager.

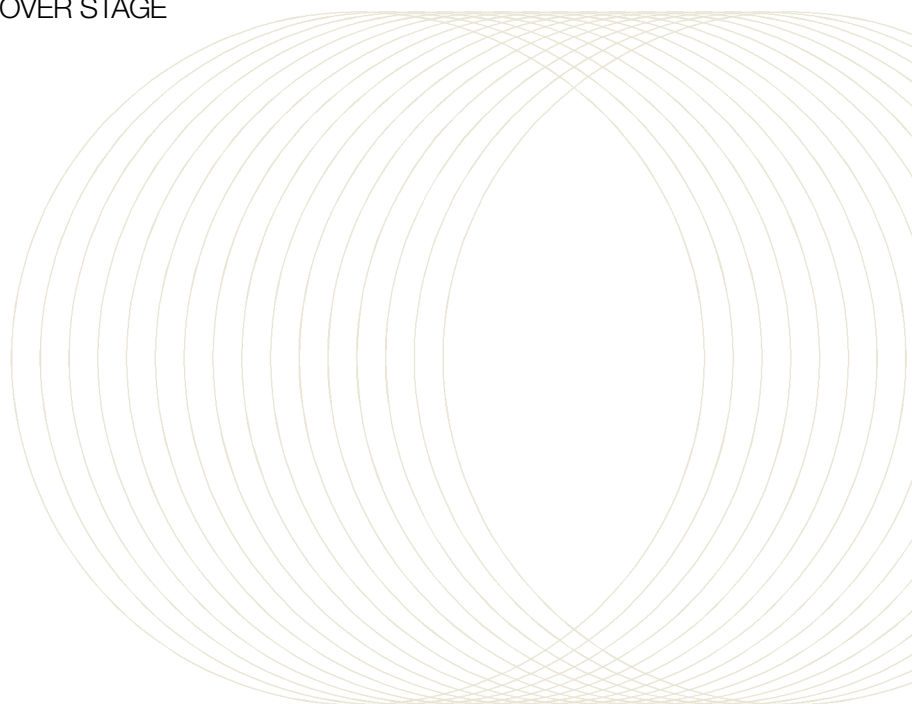
Note: It is the responsibility of the hirer to be familiar with the conditions of the Entertainment Industry-Live Theatre and Concert-Award under which technical and front-of-house staff at the Seymour Centre work.

If you require high resolution CAD drawings of the venue, please email Glenn Watson at gwatson@seymour.usyd.edu.au

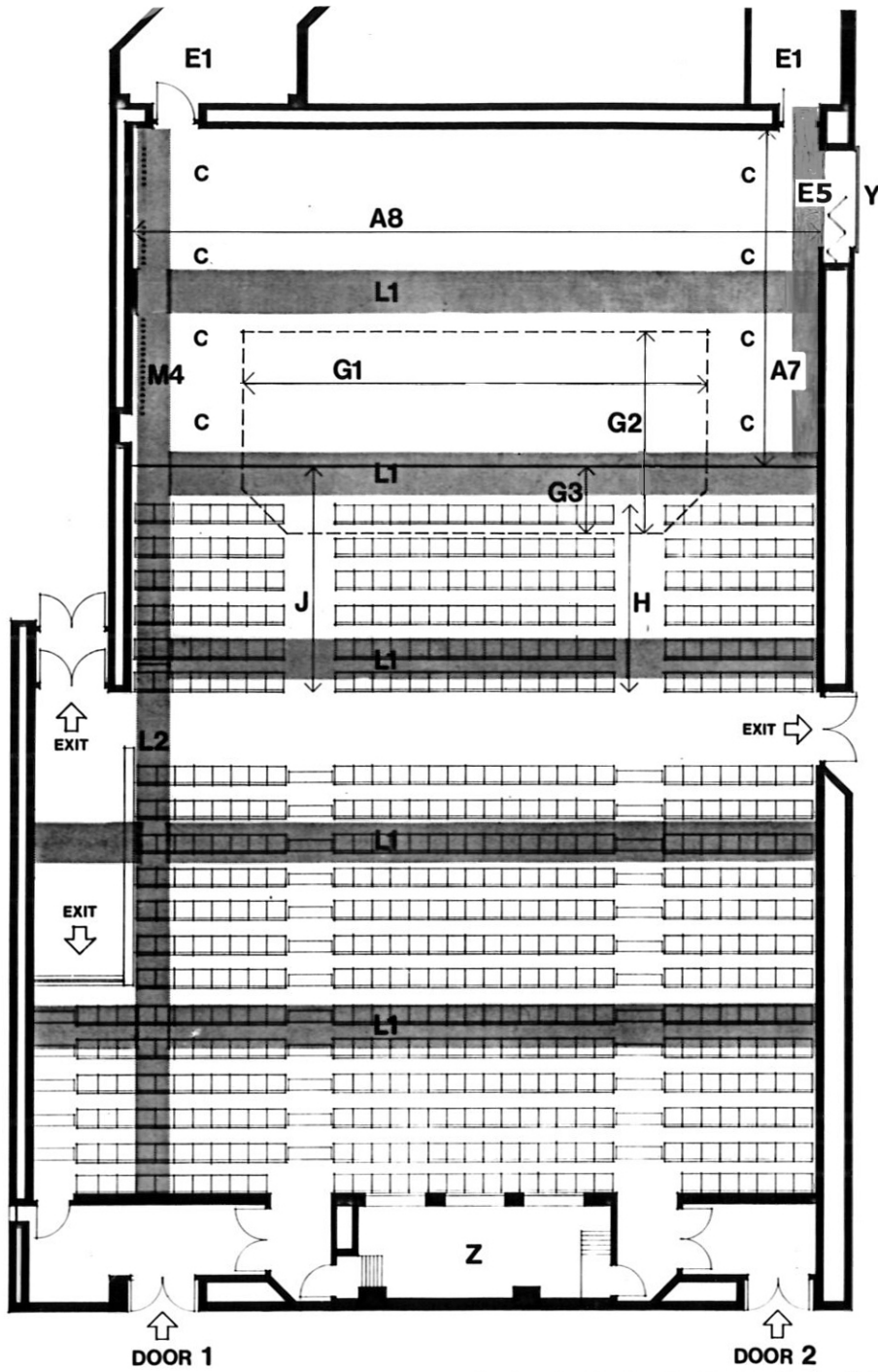
Everest Theatre

Key to accompanying plan

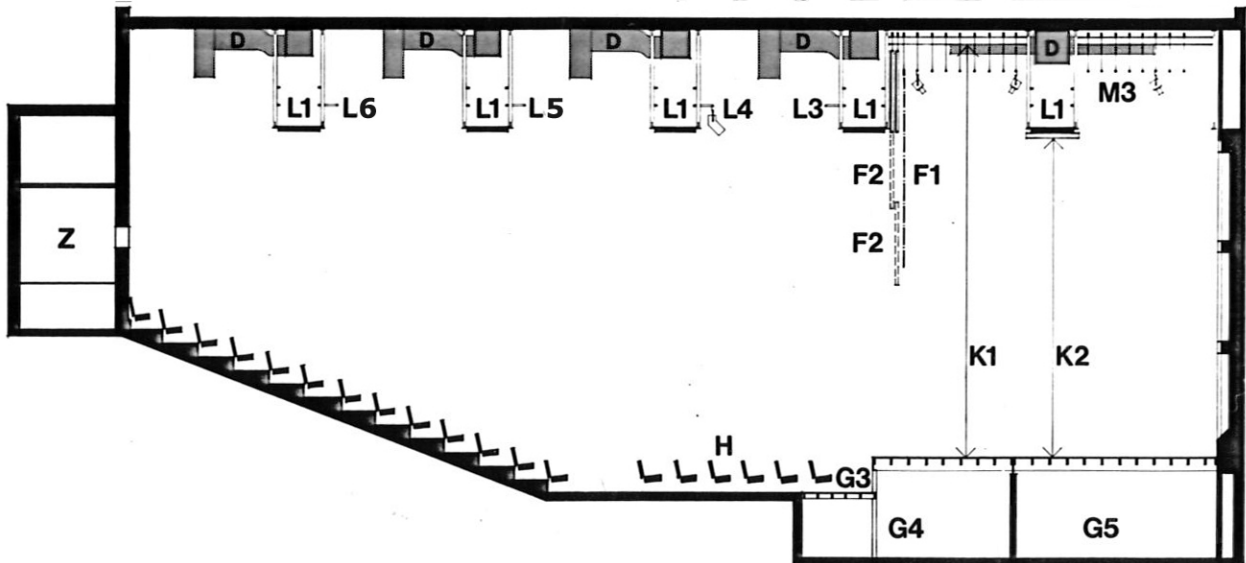
A7	MAXIMUM STAGE	DEPTH	9.06m	(29'8")
A8	MAXIMUM STAGE	WIDTH	18.52m	(60'9")
C	FLOOR WELLS			
D	AIR CONDITIONING DUCTS			
E1	ENTRY SOUNDLOCKS			
E5	DOUBLE DOORED SOUNDLOCK	HEIGHT	3.44m	(11'3")
		MAXIMUM OPENING	2.45m	(8'0")
F1	REMOVABLE HOUSE CURTAIN			
F2	RETRACTABLE PROSCENIUM ARCH HEADER SECTION			
G1	MAXIMUM PIT	WIDTH	12.7m	(41'8")
G2	MAXIMUM PIT	DEPTH	5.3m	(17'5")
G3	REMOVALBE PIT COVERING	DEPTH	1.94m	(6'4")
G4	ORCHESTRA PIT			
G5	ORCHESTRA ASSEMBLY ROOM			
H	REMOVABLE SEATING			
J	FLAT TIMBERED FLOOR TO CARPETED CROSSOVER AISLE	DEPTH	6.08m	(19'11")
K1	FLOOR UNDERSIDE OF CEILING BEAMS	HEIGHT	10.8m	(35'5")
K2	FLOOR TO UNDERSIDE OF CATWALK	HEIGHT	8.62m	(28'3")
L1	CATWALKS TRAVERSING AUDITORIUM AND STAGE (OVER)			
L2	LINKING CATWALK (OVER)			
L3	ORCHESTRA PIT			
L4	FRONT-OF-HOUSE LIGHTING BAR I			
L5	FRONT-OF-HOUSE LIGHTING BAR II			
L6	FRONT-OF-HOUSE LIGHTING BAR III			
M3	16 LIGHTING AND HANGING BARS OVER STAGE			
M4	HYDRAULIC FLYING SYSTEM			
Y	LOADING DOCK FACILITIES			
Z	CONTROL ROOM			



EVEREST THEATRE



EVEREST THEATRE



EVEREST THEATRE

