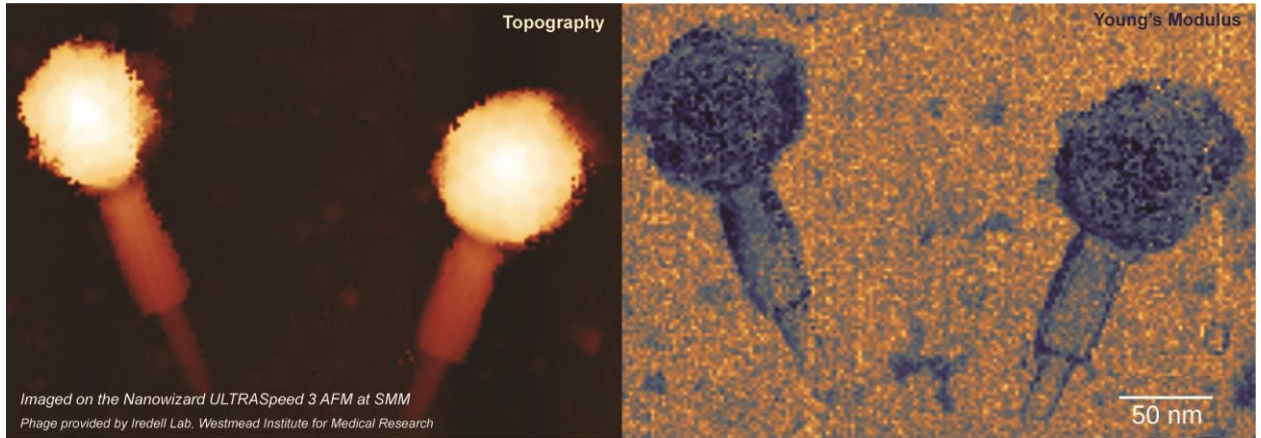




Sydney Microscopy & Microanalysis 2025 Fee Schedule



University of Sydney users:

- **\$70 per hour** (0-8 consecutive hours per session per instrument)
- **\$17.50 per hour** (each additional hour per session per instrument)
- **\$10 per hour** for specimen preparation and data processing equipment

Individual user cap of \$2,000 for the calendar year*

* Except where an individual has multiple Supervisors in a calendar year

Individual user cap excludes:

- New User Registration fee (\$300)
- Staff operated instrument work (additional \$200 per hour)
- 3View Serial Block Face SEM

External users (ex GST):

Registration fee for new users - \$300

Category	Instruments p/hr 0-8hrs	Staff p/hr
Australian Publicly Funded Research Agencies (PFRA)	\$150	\$200
Commercial	\$350	\$200

For sessions exceeding 8 hours the hourly instrument rate drops to 25% of the listed rate for remainder of session

Fees are reviewed and indexed annually