

SYDNEY  
CENTRE FOR  
INTERNATIONAL  
LAW



THE UNIVERSITY OF  
SYDNEY

# HIMALAYAN FIELD SCHOOL: DEVELOPMENT & HUMAN RIGHTS

NEPAL, 15 JANUARY – 2 FEBRUARY 2012

Are you interested in the law and politics of development and human rights in developing countries? Would you like to see first-hand how international law assists poor and vulnerable communities overseas, including refugees and minority tribal groups? Have you ever wondered what it is like to work for a United Nations agency in the field?

Sydney Law School has developed an innovative new Field School, conducted over two and a half weeks inside Nepal, to explore the fascinating and difficult problems confronting developing countries. The Field School is an elective unit for credit towards undergraduate or postgraduate law degrees.

## ABOUT THE SCHOOL

The Field School exposes students to the role and limits of law in addressing acute problems of socio-economic development and human rights facing a developing country like Nepal, which ranks among the world's poorest countries. The themes to be explored are likely to include:

- The transition from armed conflict to peace after a Maoist insurgency and the end of the monarchy in Nepal (including issues of transitional criminal justice, drafting of new constitution and building a new legal system);
- The protection of socio-economic rights (including food, water, housing and livelihoods), minority rights (of 'tribals' and 'dalits' in the caste system) and the 'right to development';
- The interaction between local disputes over natural resources, human displacement caused by development projects, environmental protection and climate change, in the context of fragile Himalayan ecologies;
- The protection of Tibetan or Bhutanese refugees in camp or mass influx situations, in the context of limited resources and the causes of, and solutions to, displacement; and

- The experience of women in development and human rights fields, in light of gender inequality in traditional Nepalese society.

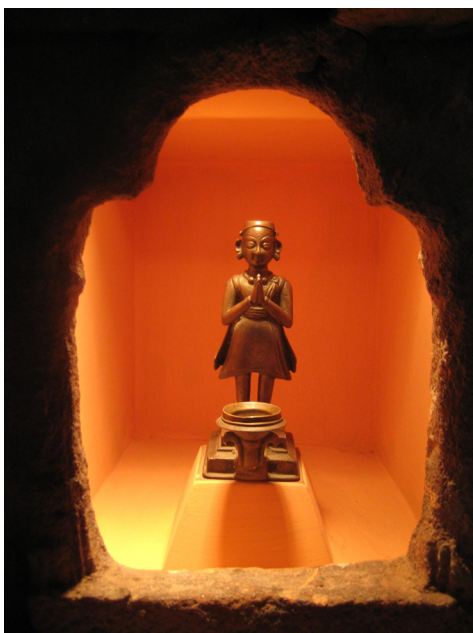
The different issues will be drawn together by reflecting on the influence of, and resistance to, human rights and international law in developing countries.

## LOCATION: NEPAL

The Field School will take place in Kathmandu, Pokhara and Melamchi in Nepal. It will be conducted in conjunction with Kathmandu School of Law, a leading university for legal education in Nepal.

Nepal has an extraordinary political, social, cultural and religious history, a diverse population and a unique natural environment. In recent years it has emerged out of the turbulence of a civil war and is now building a new political and legal system.

The Field School will provide opportunities to explore Nepal's cultural and natural heritage through visits to major temples and palaces, world heritage cities and hill stations.





## TEACHING METHODS

The unique teaching methods will encourage creating thinking about development through a combination of:

- **Lectures** provided by academics from Kathmandu School of Law and Sydney Law School;
- **Site visits** to interact with and learn from community and civil society organizations, human rights defenders, NGOs, government bodies (including the legislative, judiciary and executive), and international organisations (including United Nations agencies); and
- **Field work visits** which immerse students in an investigation and close study of human rights and development issues, including: a four day stay in a rural, minority tribal village and a two day visit to Tibetan or Bhutanese refugee camps in regional Nepal.

The Field School will be open to a small group of students, with a minimum number of 20 students.

Students will also have the opportunity to meet and collaborate with Nepalese law students throughout the Field School.

## ENROLMENT

Enrolment is open to undergraduate law and postgraduate law (LLM, MIL, or MGlob) students enrolled at the University of Sydney. Cross-institutional enrolments by law students (UG or PG) from other Australian universities may also be accepted.

## ASSESSMENT

Assessment depends on your enrolment status but generally involves a combination of a short exam while in Nepal and a research essay due after your return to Australia.

## WEBSITE

Further details about the Field School are available online at: [sydney.edu.au/law/scil/fieldschool](http://sydney.edu.au/law/scil/fieldschool)

## APPLICATIONS

Formal applications for the program will open in July 2011 and completed applications will be due by 22 August 2011.

**Places are limited and it is recommended to apply as soon as possible once applications open.**

To receive email notification of when applications are open join the email list by emailing the Sydney Centre for International Law at Sydney Law School at: [law.nepal@sydney.edu.au](mailto:law.nepal@sydney.edu.au).

## COST

The Field School is offered on a full-fee basis only. Commonwealth supported places (HECS-HELP) are not available. The undergraduate tuition fee (6 credit points) is \$3,870 in 2012.

There is also an in-country expenses fee (covering accommodation, meals and transport (including flights) in Nepal) of \$1,500. Students are responsible for paying travel expenses to and from Nepal, travel insurance and vaccinations.

## INQUIRES

Please direct any administrative inquiries to Amber Colhoun, Administrator, Sydney Centre for International Law, by emailing [law.nepal@sydney.edu.au](mailto:law.nepal@sydney.edu.au).

Please direct any academic inquiries to the Academic Coordinator, Associate Professor Ben Saul, by emailing [ben.saul@sydney.edu.au](mailto:ben.saul@sydney.edu.au)

SYDNEY  
CENTRE FOR  
INTERNATIONAL  
LAW



THE UNIVERSITY OF  
**SYDNEY**

The Sydney Centre for International Law is a leading centre of excellence in research, public policy and teaching in international law, with a focus on the Asia-Pacific region.

[sydney.edu.au/law/scil](http://sydney.edu.au/law/scil)