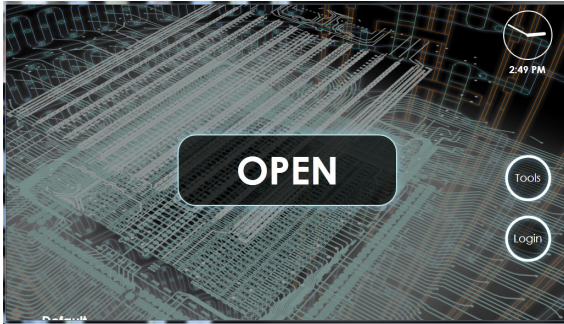


# C1 System Usage

## Start the Instrument

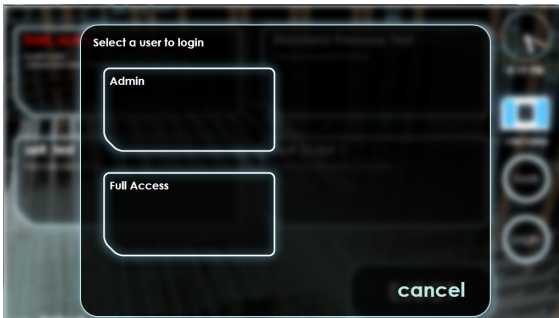
On the back of the instrument, turn the power switch ON. At power up and instrument initialization, the C1™ system home screen displays.



## (Optional) Login

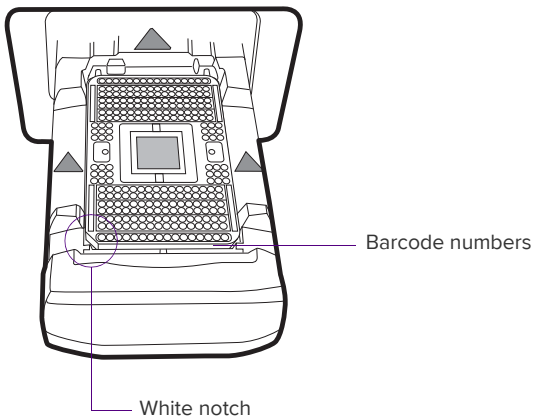
Log in as **Admin** or with a specific user account.

**NOTE** For information on setting passwords, see the C1 System User Guide, PN 100-4977. For more information on the Tools menu, also see the user guide.



## Load an IFC

- 1 Tap **OPEN**.
- 2 Place the integrated fluidic circuit (IFC) onto the tray by aligning the notched corner to the **white notch**. In this position, barcode numbers on the IFC label face out.



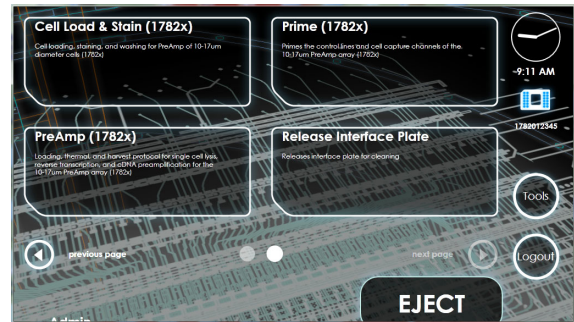
- 3 Tap **LOAD**.
- 4 C1 displays the IFC barcode at the right side of the screen. If you get a barcode error message, first check the IFC positioning and direction. You may also enter the barcode manually through the error message screen.

**NOTE** Contact technical support for help if problem persists.

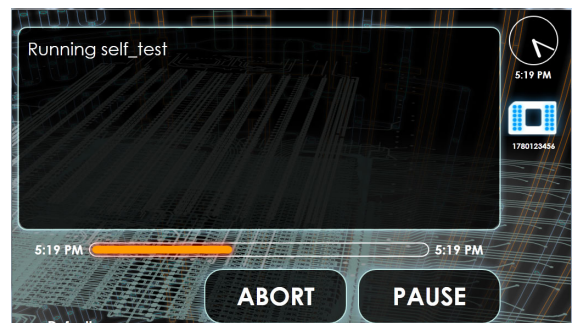
## Run a Script

- 1 Select a script to run from the script selection window. (The list of available scripts is defined by the IFC barcode.)
- 2 Tap **START**.

**NOTE** A status screen appears with a time estimate for completion.



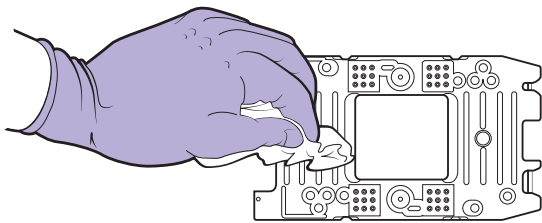
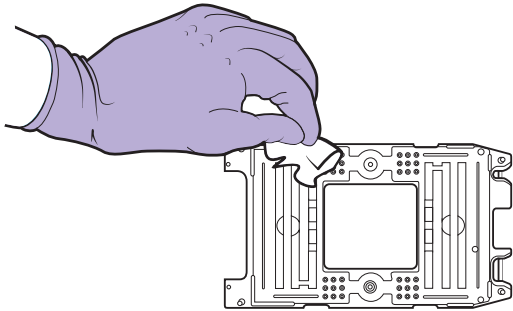
- 3 After the script is complete, as denoted on the status screen, tap **EJECT** to remove the IFC. (During an active script, **ABORT** will cancel the IFC run.)



## Clean the Interface Plate

Fluidigm recommends cleaning the interface plate once a day.

- 1 Tap **OPEN**, place a used IFC into the shuttle, then tap **LOAD**.
- 2 Tap **Release Interface Plate** on the System tab, tap **START**, then **OK**.
- 3 Remove the interface plate.
- 4 Using a lint-free cloth and 70% ethanol or 70% isopropyl alcohol, gently wipe the top and bottom of the interface plate to remove any debris.



- 5 Place the cleaned interface plate onto the used IFC in the shuttle. The notch of the interface plate must align with the white notch of the shuttle tray.
- 6 Tap **LOAD**.
- 7 Run any script, wait 10–15 seconds, then tap **ABORT** to abort the run. The interface plate installs in the instrument.

### For technical support visit [fluidigm.com/support](https://fluidigm.com/support)

EMAIL US and countries not in Europe or Asia [techsupport@fluidigm.com](mailto:techsupport@fluidigm.com) | Europe [techsupporteurope@fluidigm.com](mailto:techsupporteurope@fluidigm.com) | Asia [techsupportasia@fluidigm.com](mailto:techsupportasia@fluidigm.com)  
PHONE In North America +1 866 FLUIDLINE (+1 866 358 4354) | Outside North America +1 650 266 6100

### For Research Use Only. Not for use in diagnostic procedures.

Information in this publication is subject to change without notice. Use standard laboratory safety protocols. SDS information: [fluidigm.com/sds](https://fluidigm.com/sds). Patent and license information: [fluidigm.com/legalnotices](https://fluidigm.com/legalnotices). EU's WEEE directive information: [fluidigm.com/compliance](https://fluidigm.com/compliance). Fluidigm, the Fluidigm logo, and C1 are trademarks or registered trademarks of Fluidigm Corporation in the US and/or other countries. © 2014 Fluidigm Corporation. All rights reserved. 11/2014